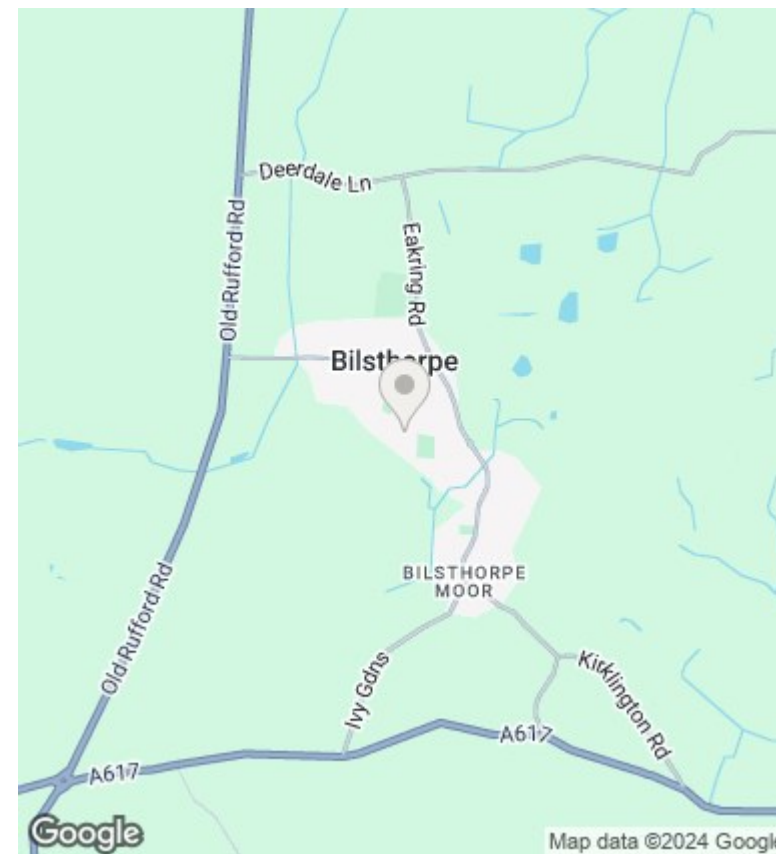
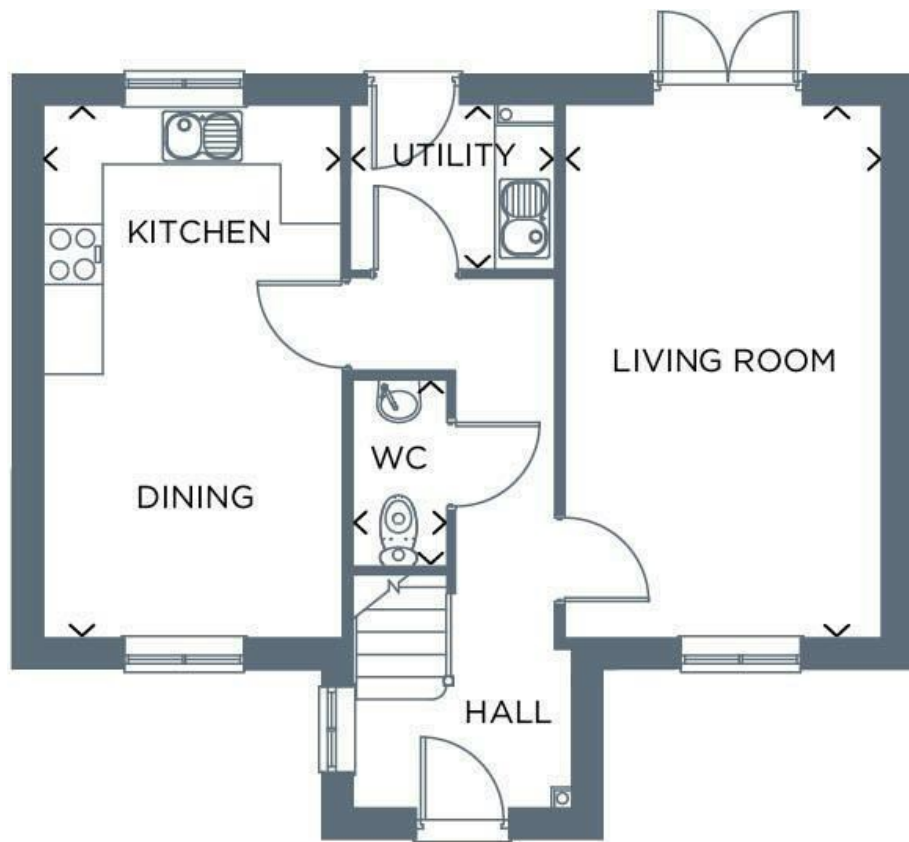




## 11 Bill Lane, Bilsthorpe, NG22 8GE

£1,250 Per Month

- Nearly New Four Bedroom Detached House
- Lounge and Kitchen/Diner
- Family Bathroom
- Driveway and Garage
- Utility Room and Downstairs W.C
- Front and Rear Gardens
- Spacious Throughout
- Master Bedroom with Ensuite



### Directions

### Viewings

Viewings by arrangement only. Call 01159625003 to make an appointment.

### Council Tax Band

A

### EPC Rating:

B

Energy Efficiency Rating		Current	Potential
<i>Very energy efficient - lower running costs</i>			
(92 plus) <b>A</b>			<b>94</b>
(81-91) <b>B</b>		<b>84</b>	
(69-80) <b>C</b>			
(55-68) <b>D</b>			
(39-54) <b>E</b>			
(21-38) <b>F</b>			
(1-20) <b>G</b>			
<i>Not energy efficient - higher running costs</i>			
<b>England &amp; Wales</b>		EU Directive 2002/91/EC	