



37 Neston Drive, Basford, Nottingham, NG6 8QZ

Price Guide £200,000

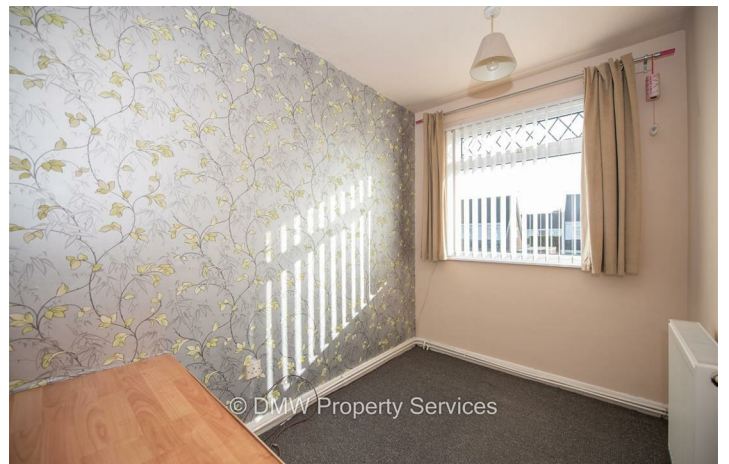
- Spacious Three Bedroom House
- Large Lounge and Kitchen/Diner
- No Upward Chain
- Rear Garden
- Semi Detached
- First Floor Bathroom
- Block Paved Driveway
- GUIDE PRICE £200,000 - £225,000

37 Neston Drive, Nottingham NG6 8QZ

GUIDE PRICE £200,000 - £225,000 - Spacious and Well Presented Three Bedroom Semi Detached House. Large Lounge and Kitchen/Diner. Blocked Paved Driveway. Rear Garden. No Upward Chain.



Council Tax Band: B



Entrance Hall

Door into the Lounge. Stairs to the First Floor.

Lounge/Diner

Laminate wood flooring. Double glazed window to the front elevation. Door to the Kitchen.

Kitchen/Diner

Laminate wood effect flooring. A range of base and wall units with integrated oven and plumbing for a washing machine and dishwasher. Radiator. Window and door to the rear elevation. Breakfast Bar.

First Floor Landing

Doors to all Bedrooms and the Bathroom.

Bedroom

Laminate wood effect flooring. Radiator. Window to the front elevation.

Bedroom

Double glazed window to the rear elevation. Radiator.

Bedroom

Radiator. Window to the front elevation.

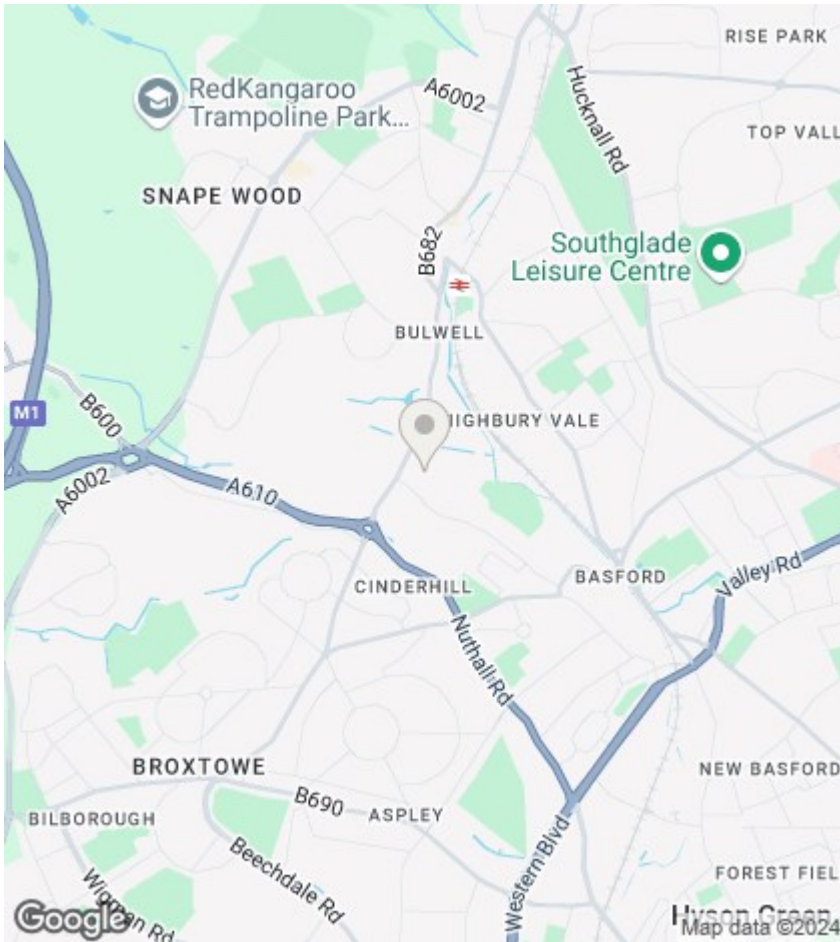
Bathroom

Window to the front elevation. Panelled bath with shower over. Pedestal wash hand basin. Low level flush toilet. Window to the rear.

Exterior

Fenced boundaries. Artificial grass. Large block paved driveway to the front.





Viewings

Viewings by arrangement only. Call 01159625003 to make an appointment.

EPC Rating:

C

Energy Efficiency Rating		Current	Potential
Very energy efficient - lower running costs			
(92 plus) A			89
(81-91) B			
(69-80) C		70	
(55-68) D			
(39-54) E			
(21-38) F			
(1-20) G			
Not energy efficient - higher running costs			
England & Wales		EU Directive 2002/91/EC	

