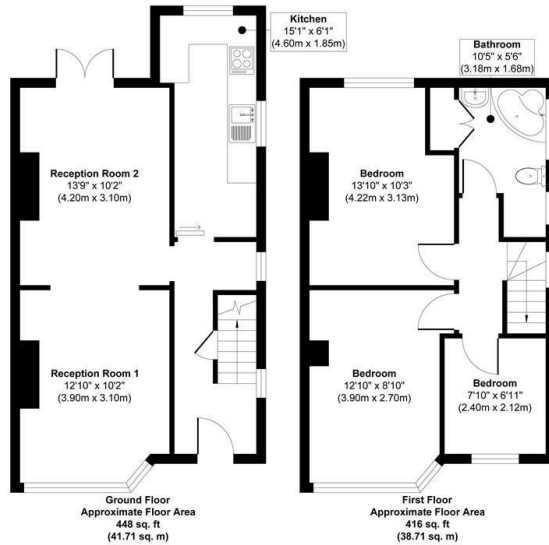




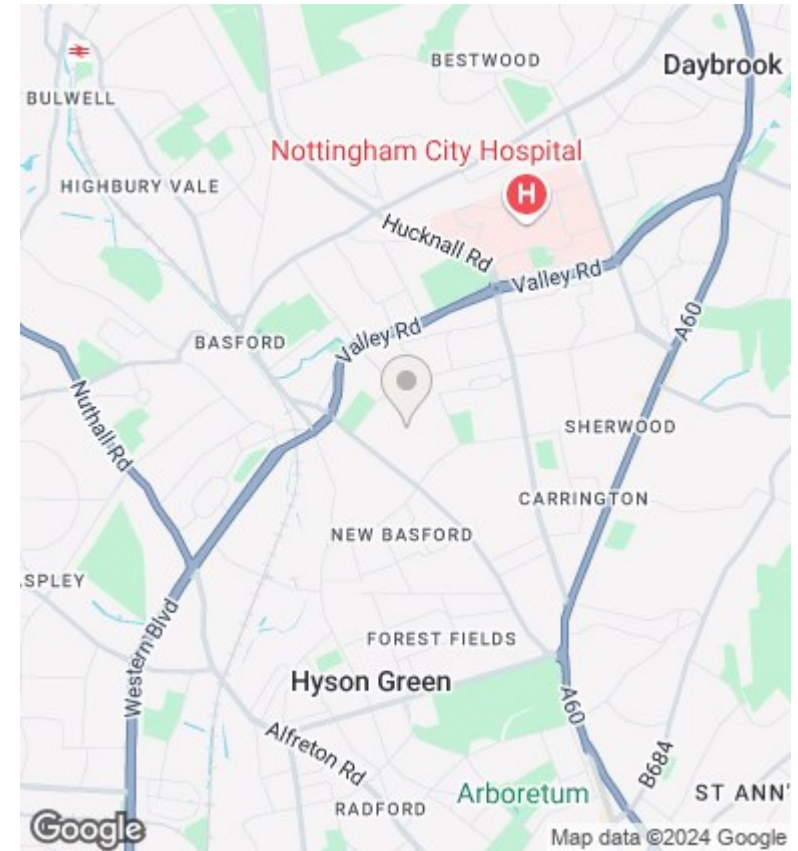
## 50 Westbury Road, Nottingham, NG5 1EJ

Offers Over £215,000

- Three Bedroom Semi Detached House
- First Floor Bathroom
- Spacious Rear Garden
- Large Open Plan Lounge/Diner
- Driveway
- In Need of Modernisation
- Three Good Size Bedrooms
- Garage
- No Upward Chain



Approx. Gross Internal Floor Area 864 sq. ft / 80.42 sq. m  
Illustration for identification purposes only, measurements are approximate, not to scale.



## Directions

## Viewings

Viewings by arrangement only. Call 01159625003 to make an appointment.

## Council Tax Band

B

## EPC Rating:

D

Energy Efficiency Rating		Current	Potential
Very energy efficient - lower running costs			
(92 plus) <b>A</b>			85
(81-91) <b>B</b>			
(69-80) <b>C</b>			
(55-68) <b>D</b>		65	
(39-54) <b>E</b>			
(21-38) <b>F</b>			
(1-20) <b>G</b>			
Not energy efficient - higher running costs			
<b>England &amp; Wales</b>		EU Directive 2002/91/EC	