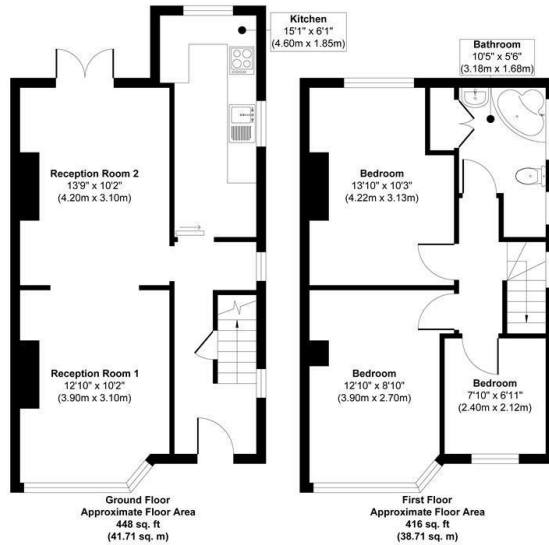




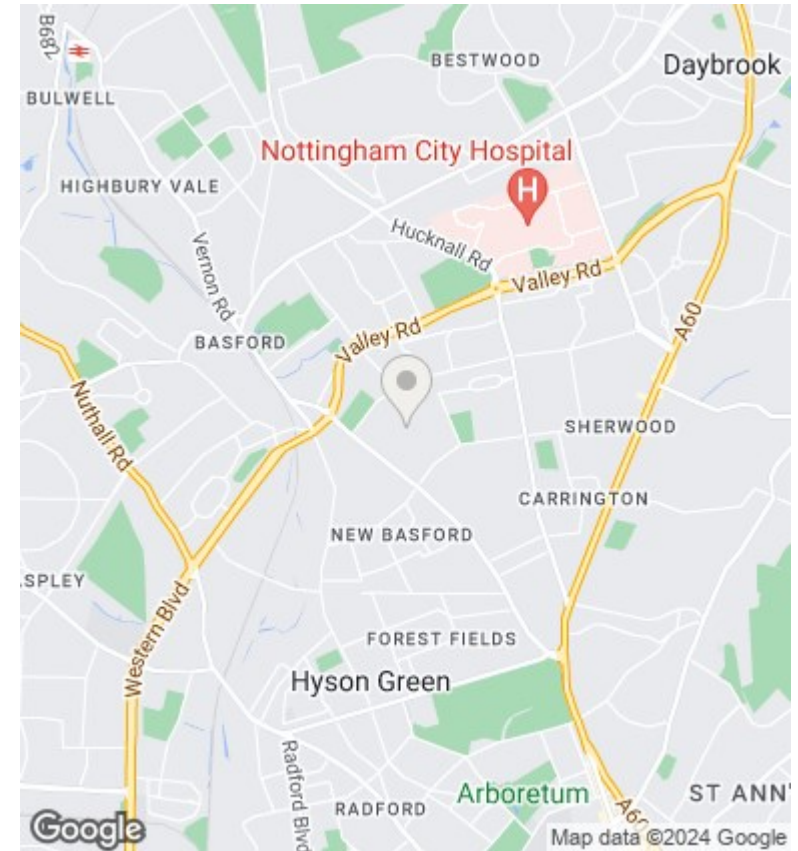
50 Westbury Road, Nottingham, NG5 1EJ

Asking Price £227,500

- Three Bedroom Semi Detached House
- First Floor Bathroom
- Spacious Rear Garden
- Large Open Plan Lounge/Diner
- Driveway
- In Need of Modernisation
- Three Good Size Bedrooms
- Garage
- No Upward Chain



Approx. Gross Internal Floor Area 864 sq. ft / 80.42 sq. m
Illustration for identification purposes only, measurements are approximate, not to scale.



Directions

Viewings

Viewings by arrangement only. Call 01159625003 to make an appointment.

Council Tax Band

B

EPC Rating:

D

Energy Efficiency Rating		Current	Potential
Very energy efficient - lower running costs			
(92 plus)	A		
(81-91)	B		85
(69-80)	C		
(55-68)	D	65	
(39-54)	E		
(21-38)	F		
(1-20)	G		
Not energy efficient - higher running costs			
England & Wales		EU Directive 2002/91/EC	