

109 Hilton Road, Mapperley, Nottingham, NG3 6AR

Asking Price £395,000

- Four Bedroom Detached House
- Ensuite and Family Bathroom
- Block Paved Driveway
- Spacious Lounge and Kitchen/Diner
- Landscaped Rear Garden
- Sought After Location
- Downstairs W.C
- Garage
- Solar Panels

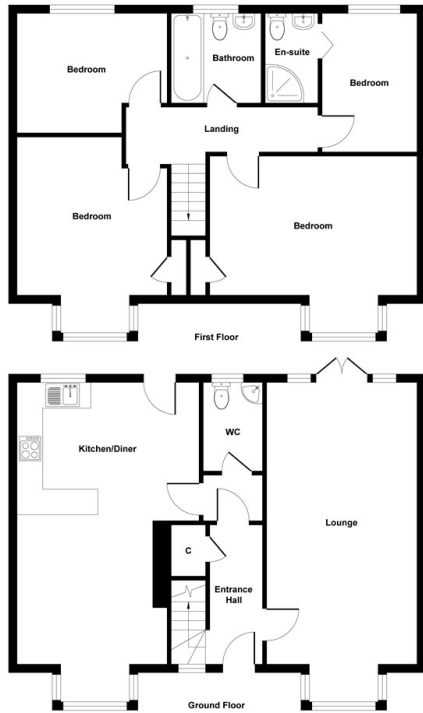
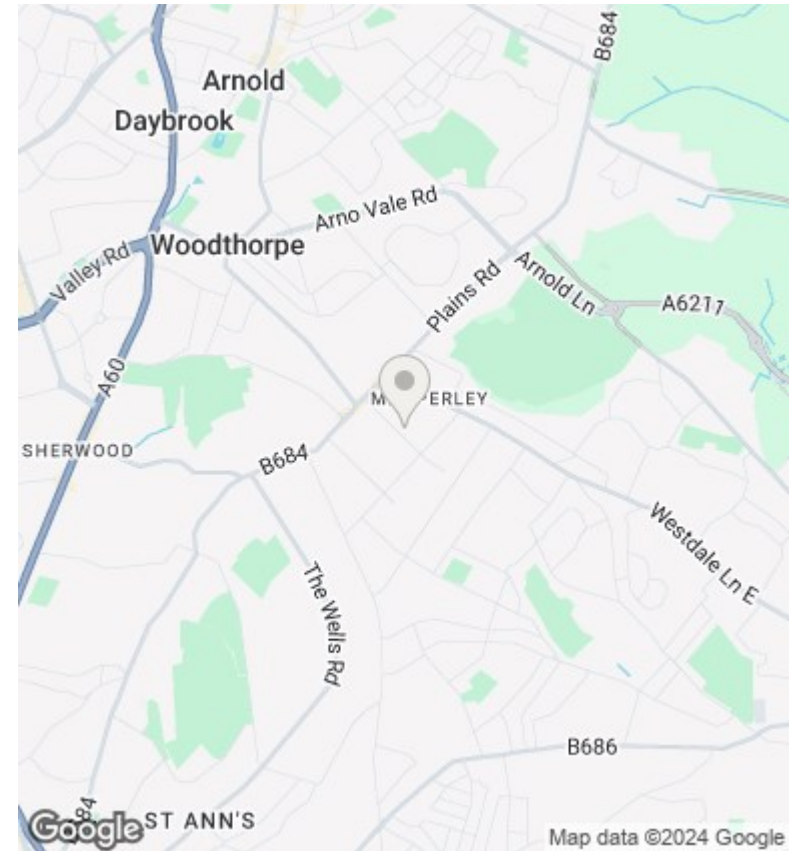


Illustration for identification purposes only, measurements are approximate, not to scale.



Directions

Viewings

Viewings by arrangement only. Call 01159625003 to make an appointment.

Council Tax Band

D

EPC Rating:

D

Energy Efficiency Rating		
	Current	Potential
<i>Very energy efficient - lower running costs</i>		
(92 plus) A		
(81-91) B		
(69-80) C		
(55-68) D	58	64
(39-54) E		
(21-38) F		
(1-20) G		
<i>Not energy efficient - higher running costs</i>		
England & Wales	EU Directive 2002/91/EC	