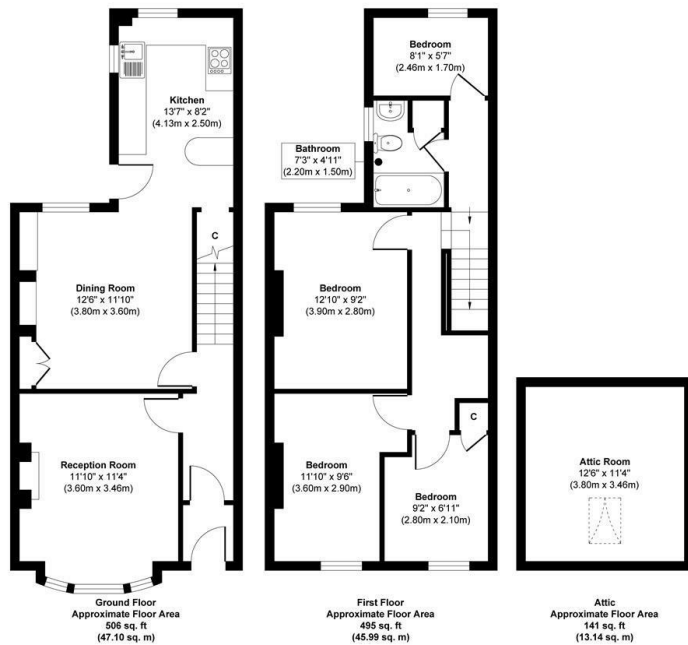




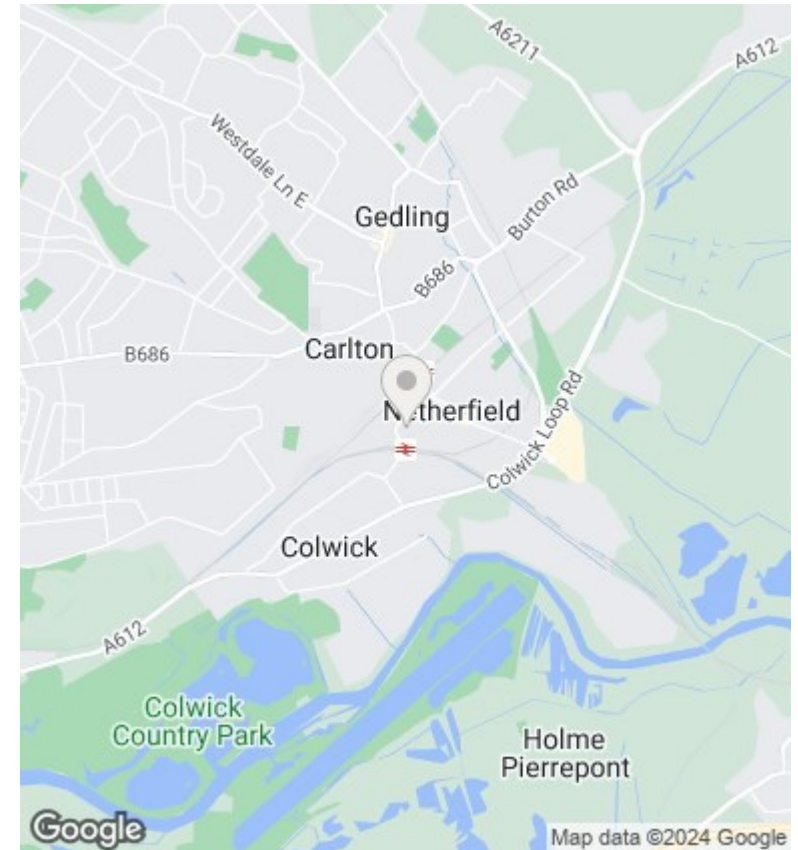
7 Beech Avenue, Netherfield, Nottingham, NG4 2FU

Price Guide £200,000

- GUIDE PRICE £200,000 - £220,000
- Spacious Four Bedroom Mid Terrace
- Lounge and Dining Room
- First Floor Bathroom
- Loft Room
- Front and Rear Garden
- Cul-de-sac



Approx. Gross Internal Floor Area 1142 sq. ft / 106.23 sq. m
 Illustration for identification purposes only, measurements are approximate, not to scale.



Directions

Viewings

Viewings by arrangement only. Call 01159625003 to make an appointment.

Council Tax Band

B

EPC Rating:

C

Energy Efficiency Rating		
	Current	Potential
Very energy efficient - lower running costs		
(92 plus) A		88
(81-91) B		
(69-80) C	71	
(55-68) D		
(39-54) E		
(21-38) F		
(1-20) G		
Not energy efficient - higher running costs		
England & Wales	EU Directive 2002/91/EC	