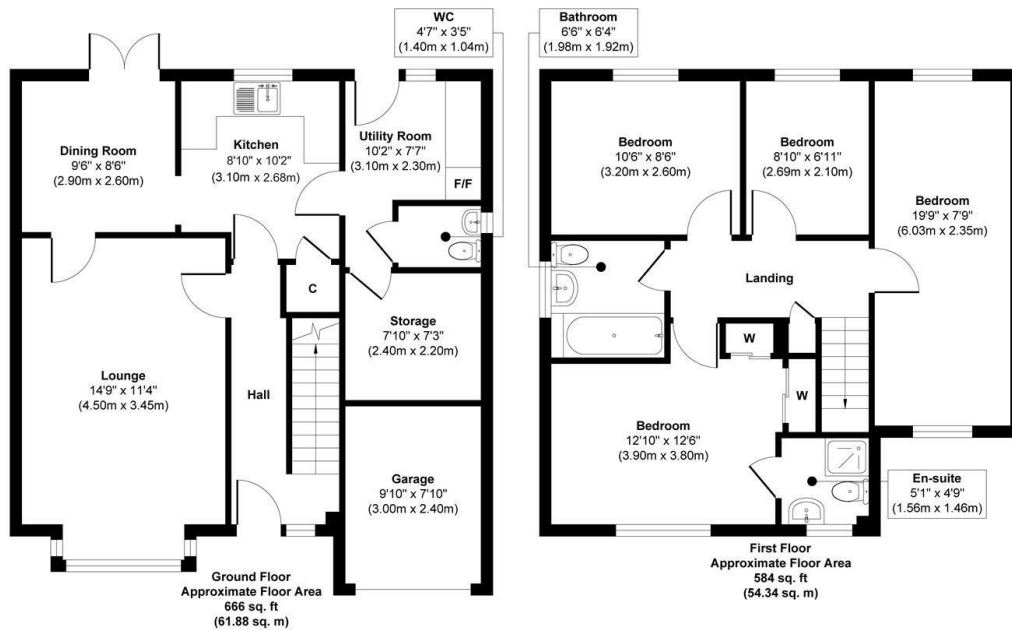




43 Sheriffs Lea, Toton, Nottingham, NG9 6LJ

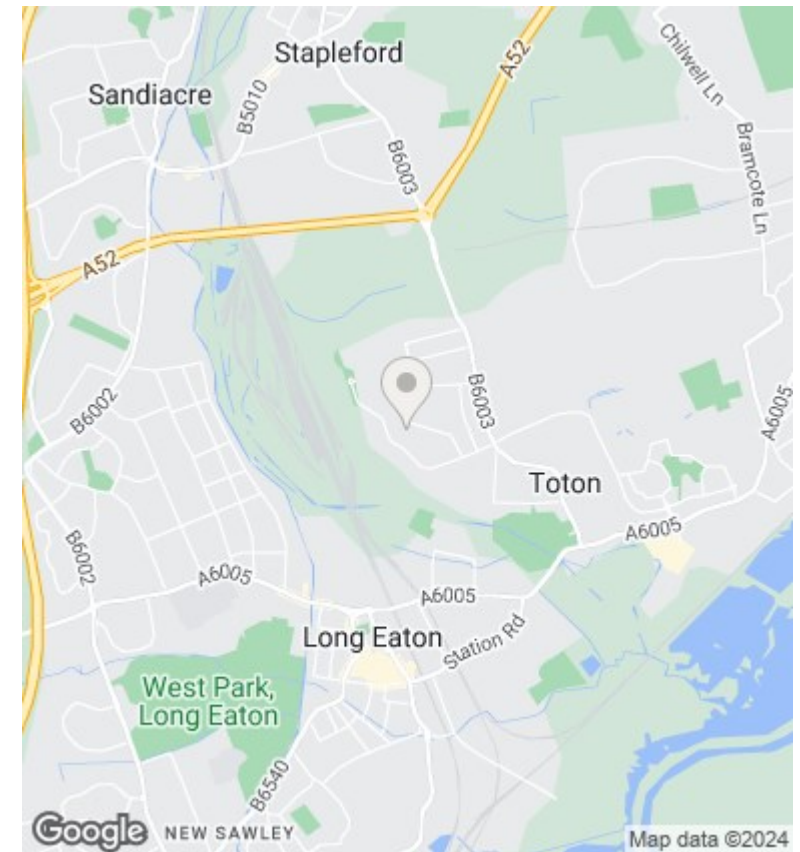
Asking Price £370,000

- Substantial Four Bedroom Detached House
- Part Garage and Storage Room
- Driveway
- Large Lounge, Dining Room, Kitchen and Utility Room
- Four Good Size Bedrooms
- Front and Rear Gardens
- Downstairs W.C
- En-Suite and Family Bathroom



Approx. Gross Internal Floor Area 1250 sq. ft / 116.22 sq. m

Illustration for identification purposes only, measurements are approximate, not to scale.



Directions

Viewings

Viewings by arrangement only. Call 01159625003 to make an appointment.

Council Tax Band

B

EPC Rating:

D

Energy Efficiency Rating		Current	Potential
Very energy efficient - lower running costs			
(92 plus) A			
(81-91) B			82
(69-80) C			
(55-68) D		59	
(39-54) E			
(21-38) F			
(1-20) G			
Not energy efficient - higher running costs			
England & Wales		EU Directive 2002/91/EC	