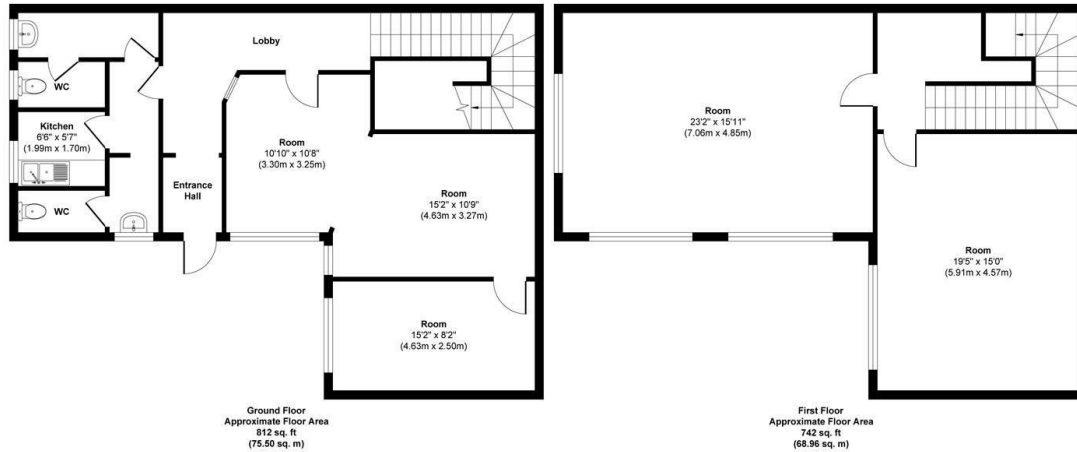




## Unit 1, Bartholomews Court St. Bartholomews Road, Nottingham,

£1,200 Per Month

- Substantial Building Set Over Two Stories
- Terms Negotiable - Long Term Lease Preferable
- Previously Used as Nursery
- Parking Available
- Two Large Ground Floor and First Floor Rooms
- Available Immediately



Approx. Gross Internal Floor Area 1554 sq. ft / 144.46 sq. m  
Illustration for identification purposes only, measurements are approximate, not to scale.



## Directions

## Viewings

Viewings by arrangement only. Call 01159625003 to make an appointment.

## Council Tax Band

## EPC Rating:

Energy Efficiency Rating		Current	Potential
<i>Very energy efficient - lower running costs</i>			
(92 plus) <b>A</b>			
(81-91) <b>B</b>			
(69-80) <b>C</b>			
(55-68) <b>D</b>			
(39-54) <b>E</b>			
(21-38) <b>F</b>			
(1-20) <b>G</b>			
<i>Not energy efficient - higher running costs</i>			
<b>England &amp; Wales</b>		EU Directive 2002/91/EC	