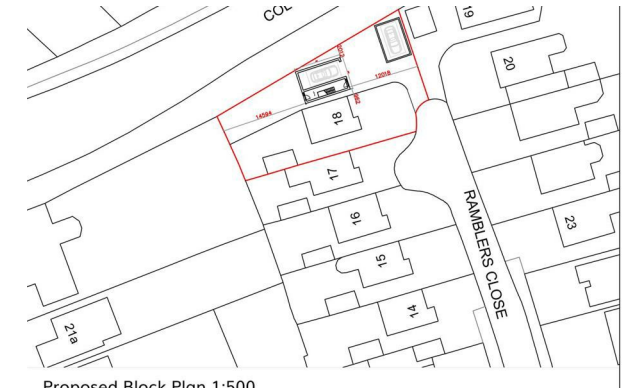


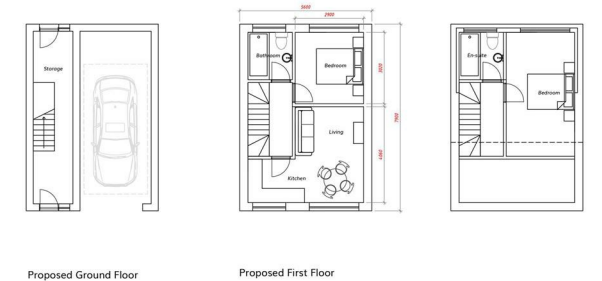
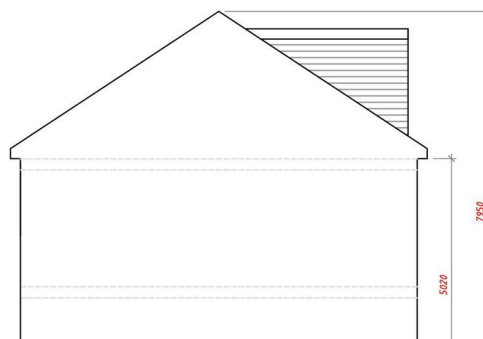
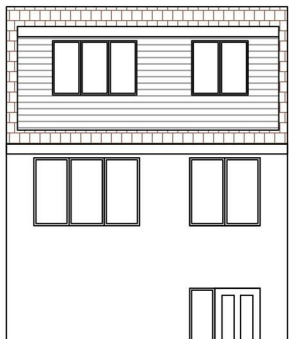
Proposed Left Side Elevation



Proposed Front Elevation



Proposed Block Plan 1:500



Proposed Ground Floor

Proposed First Floor

Land At, 18 Ramblers Close, Colwick, Nottingham, NG4 2DN

Offers Over £60,000

- Land For Sale
- Planning Granted for Two Bedroom Detached House
- Planning Ref. No: 2020/0835
- Granted by Appeal - Updated Decision Not Currently Showing
- Viewings Strictly By Appointment Only
- Appeal Available Upon Request

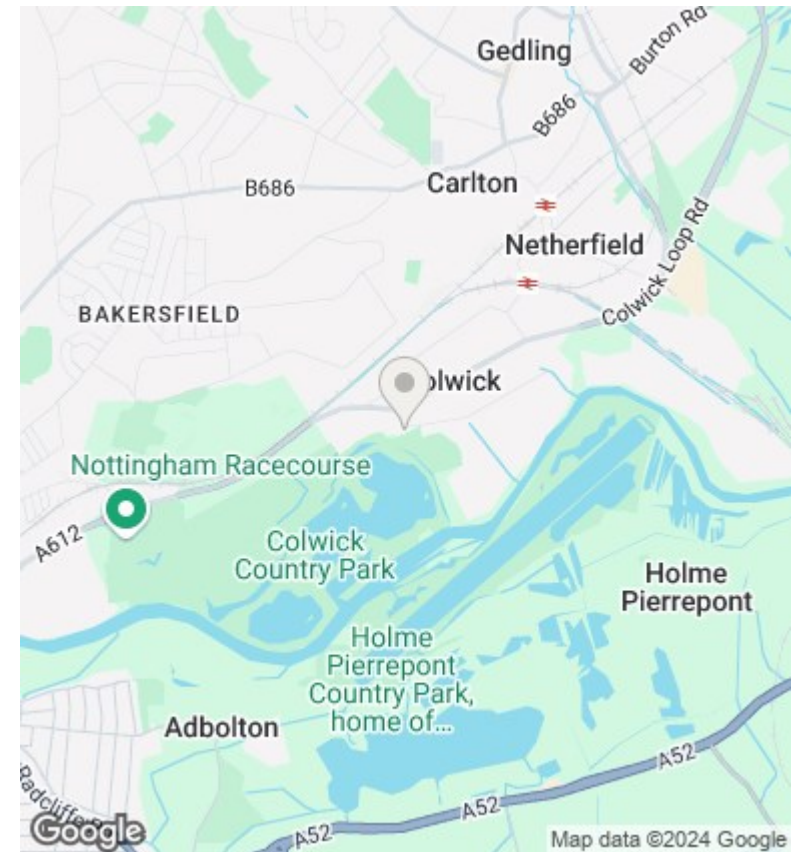
Directions

Viewings

Viewings by arrangement only. Call 01159625003 to make an appointment.

Council Tax Band

EPC Rating:



Energy Efficiency Rating		
	Current	Potential
<i>Very energy efficient - lower running costs</i>		
(92 plus) A		
(81-91) B		
(69-80) C		
(55-68) D		
(39-54) E		
(21-38) F		
(1-20) G		
<i>Not energy efficient - higher running costs</i>		
England & Wales	EU Directive 2002/91/EC	