

Disclaimer

These particulars, whilst believed to be accurate are set out as a general outline only for guidance and do not constitute any part of an offer or contract. Intending purchasers should not rely on them as statements or representation of fact, but must satisfy themselves by inspection or otherwise as to their accuracy. We have not carried out a detailed survey nor tested the services, appliances and specific fittings. Room sizes should not be relied upon for carpets

and furnishings. The measurements given are approximate. No person in this firms employment has the authority to make or give any representation or warranty in respect of the property.

Daniel Brewer

51 High Street  
Great Dunmow  
Essex, CM6 1AE

Telephone • 01371 856585  
Website • www.danielbrewer.co.uk  
E-mail • info@danielbrewer.co.uk

LUBBERHEDGES LANE, STEBBING, GREAT DUNMOW

£5,750 PER MONTH

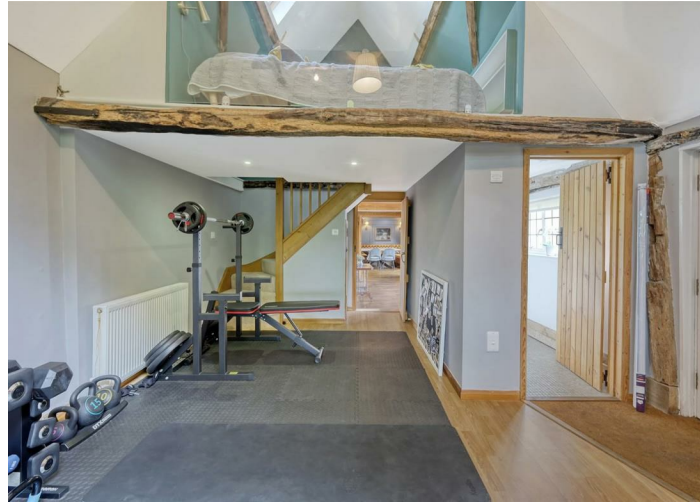




LUBBERHEDGES LANE  
STEBBING  
GREAT DUNMOW  
ESSEX  
CM6 3BU







- Available July
- Five Bedroom Detached Farmhouse
- Grade II Listed
- Six Acres Of Grounds
- Four Bay Cart-Lodge with Annexe Above
- Gated Shingle Driveway with Parking for Multiple Vehicles
- Multiple Reception Rooms
- Kitchen & Family Room
- Undulating Countryside Views
- Sauna Room, Cold Bath & Outdoor Hot Tub

**\*\*AVAILABLE JULY\*\*** Nestled off a tranquil country lane in the charming village of Stebbing, Great Dunmow, this exquisite five-bedroom detached cottage, dating back to the 16th Century, is a true gem. As a Grade II Listed farmhouse, it offers a unique blend of historical character and modern comforts, making it an ideal family home.

The property is set within an impressive six acres of beautifully maintained grounds, providing ample space for outdoor activities and relaxation. Upon arrival, you are greeted by an electric five-bar timber gate that opens onto a shingle driveway, leading you to the heart of this enchanting residence.

Inside, Tollesbury Farm boasts four spacious reception rooms, perfect for entertaining guests or enjoying quiet family time. The five well-appointed bedrooms ensure that everyone has their own private space, while the three bathrooms offer convenience and comfort. The farmhouse has been thoughtfully extended, restored, and refurbished, preserving its period features while enhancing its liveability.

For those who appreciate leisure and wellness, the property includes a sauna room, a refreshing cold bath, and an outdoor hot tub, providing the perfect retreat after a long day. The manicured gardens and additional paddocking further enhance the appeal of this remarkable home, making it a sanctuary for nature lovers.

With parking available for ample vehicles, this property is not only a stunning residence but also a practical choice for families or those who enjoy hosting gatherings. Available from July, this is an opportunity not to be missed. Experience the charm and elegance of country living at Tollesbury Farm, where history meets modern luxury. No CCJ's





