

Daniel Brewer

51 High Street
Great Dunmow
Essex, CM6 1AE

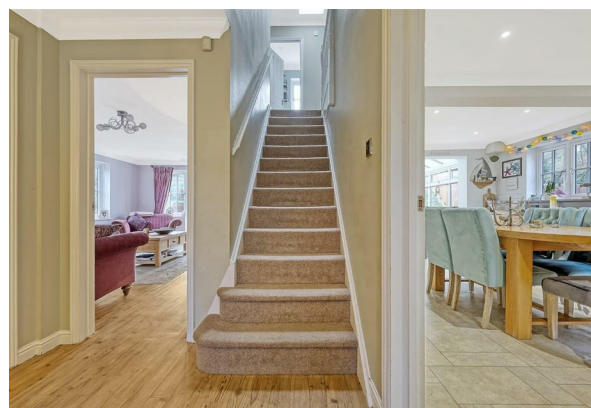
Telephone • 01371 856585
Website • www.danielbrewer.co.uk
E-mail • info@danielbrewer.co.uk

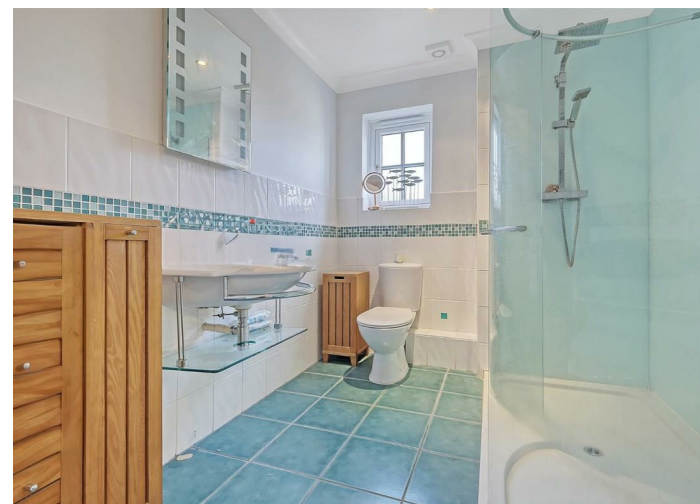
NORTHAMPTON MEADOW, GREAT BARDFIELD, BRAINTREE
OFFERS OVER £600,000



**NORTHAMPTON MEADOW
GREAT BARDFIELD
BRAINTREE**

Commanding an elevated position on a quiet close in the thriving village of Great Bardfield is this substantial four bedroom detached country home. The ground floor accommodation comprises:- living room, kitchen/dining room, study, conservatory, utility room, cloakroom and entrance hall. On the first floor are four bedrooms with en-suite facilities to the principal bedroom and a family bathroom. Externally the property boasts a double garage with driveway parking and a wraparound garden.





Family Bathroom

UPVC double glazed opaque window to rear aspect, enclosed P-bath with mixer taps & shower attachment, wash hand basin with vanity unit below, W.C, heated towel rail, part tiled walls, tiled flooring, inset spotlights, extractor fan.

Double Garage With Driveway Parking

To the front of the property is a double garage with a single roller shutter door and an additional set of double doors, power and lighting. To the front of the garage is a block paved driveway.

Wraparound Garden

To the rear of the property is a patio area with the remainder lawn. The garden is tiered with steps leading to the second and third tiers. An additional patio area is situated on the third tier overlooking open countryside. The garden further benefits from a variety of raised borders and an external water tap. Side access is granted via a timber gate.

- Four Bedrooms
- Detached Country Home
- Double Garage With Driveway Parking
- Wraparound Garden
- Popular Village Location
- Two Receptions
- Study & Conservatory
- Utility Room & Cloakroom
- En-Suite & Family Bathroom
- Elevated Position

Entrance Hall

Built-in storage cupboard, wood effect flooring, radiator, power points, stairs rising to the first floor landing, doors to.

Cloakroom

UPVC double glazed opaque window to side aspect, W.C, wash hand basin, radiator.

Study

8'6" x 6'7" (2.59m x 2.01m)

UPVC double glazed window to front aspect, radiator, wood effect flooring, power points.

Kitchen/Dining Room

18'8" x 15'1" (5.69m x 4.60m)

UPVC double glazed windows to multiple aspects, base and eye level units with Granite working surfaces over, inset sink with drainer unit & miser taps, five ring electric hob with extractor over, inset oven, integrated dishwasher, freestanding fridge, freestanding freezer, space for wine cooler, inset spotlights, radiator, power points, part tiled walls, tiled flooring, opening to.

Conservatory

15'5" x 15'1" (4.70m x 4.60m)

UPVC double glazed windows to multiple aspects, tiled flooring, radiator, power points, UPVC double glazed French doors leading to the rear garden, door to.

Utility Room

7'4" x 5'9" (2.24m x 1.75m)

Base and eye level units with complimentary working surfaces over, space for washing machine, space for tumble dryer, tiled flooring, power points.





Living Room

14'9" x 12'6" (4.50m x 3.81m)

UPVC double glazed window to multiple aspects, feature fireplace with timber surround, radiator, wood effect flooring, T.V point, power points, UPVC double glazed French doors leading to the rear garden.

First Floor Landing

Radiator, power points, door to airing cupboard, doors to.

Bedroom One

14'5" x 12'6" (4.39m x 3.81m)

UPVC double glazed window to front aspect, a range of built-in wardrobes, radiator, power points, T.V point, door to.

En-Suite

UPVC double glazed window to front aspect, walk-in shower with glass enclosure & rainfall head with attachment, wash hand basin, W.C, heated towel rail, part tiled walls, tiled flooring, inset spotlights, extractor fan.

Bedroom Two

12'2" x 9'10" (3.71m x 3.00m)

UPVC double glazed window to front aspect, built-in wardrobe, radiator, power points.

Bedroom Three

7'5" x 7'4" (2.26m x 2.24m)

UPVC double glazed window to rear aspect, radiator, power points.

Bedroom Four

10'5" x 8'6" (3.18m x 2.59m)

UPVC double glazed window to rear aspect, radiator, power points, built-in wardrobe.

