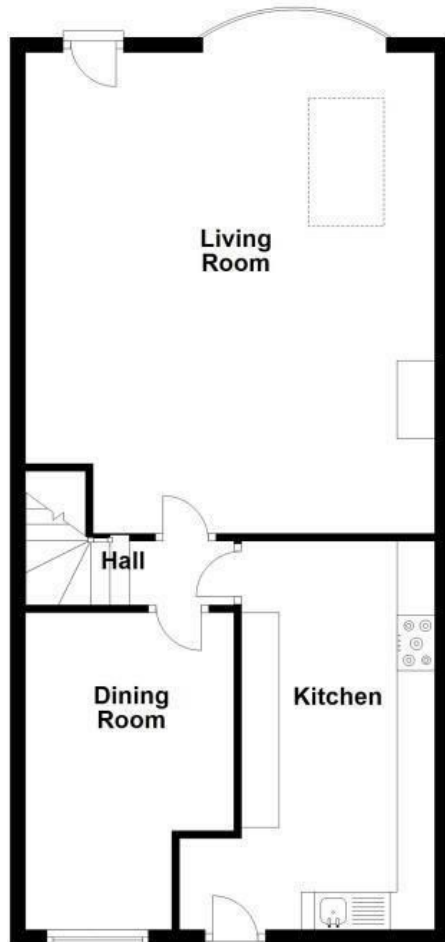
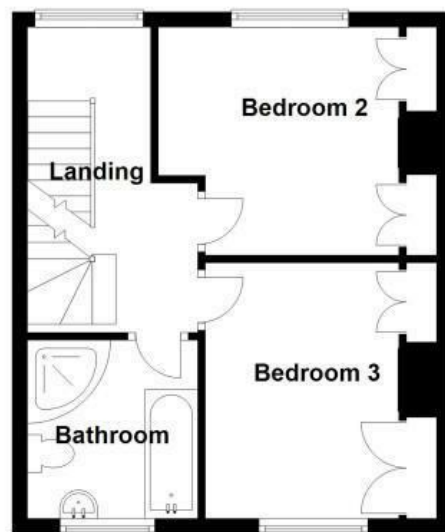


Ground Floor



First Floor



Second Floor



Daniel Brewer

51 High Street
Great Dunmow
Essex, CM6 1AE

Telephone • 01371 856585
Website • www.danielbrewer.co.uk
E-mail • info@danielbrewer.co.uk

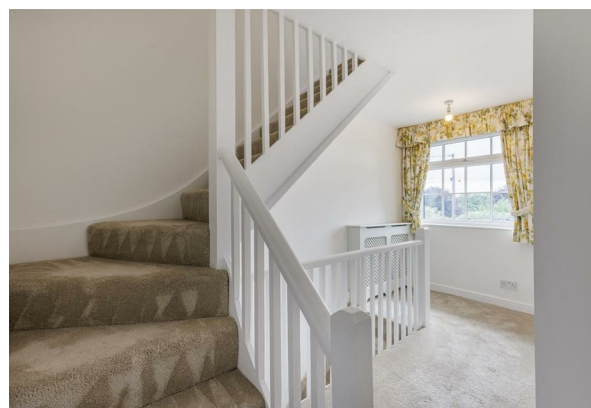
HAWKSPUR GREEN, LITTLE BARDFIELD, BRAINTREE

OFFERS OVER £400,000



HAWKSPUR GREEN LITTLE BARDFIELD BRAINTREE

*** NO ONWARD CHAIN *** Daniel Brewer are pleased to offer this three bedroom mid-terrace family home located in the desirable hamlet of Hawkspur Green. The property benefits from a rural location overlooking exquisite farmland vistas, with large rear and front gardens, and timber built summer house, and three timber sheds. The internal accommodation is split over three floors, with the ground floor comprising: entrance area, kitchen, living room, and dining room / study. On the first floor are two bedrooms and a family bathroom. The second floor boasts a large principal bedroom with en-suite.





front gardens which benefit from various mature trees, three timber sheds, an oversized summer house, various flower beds, and exquisite views over open farmland. To the rear aspect, is a flagstone patio with remainder lawns benefiting from mature trees and shrubs.

Summer House

16'4" x 9'6" (5.0m x 2.9m)

Access via decked frontage with timber fence, timber French doors, timber flooring, wall mounted light fixture, ceiling mounted spotlight array, various power points.

Additional Information

The property benefits from oil fired central heating via an external boiler.

- **No Onward Chain**
- **Mid-Terraced Family Home**
- **Three Bedrooms**
- **Family Bathroom & En-suite**
- **Large Living / Family Room**
- **Dining Room / Study**
- **Kitchen**
- **Timber Summer House**
- **Front & Rear Gardens**
- **Farmland Vistas**

Entrance Area

3'11" x 2'7" (1.2m x 0.8m)

Entrance via UPVC partly-glazed stable door to front aspect, wood laminate flooring, access to coat/storage cupboard. Opening to:

Kitchen

16'8" x 8'6" (5.1m x 2.6m)

Double glazed UPVC window to front aspect, various base and eye level units with timber work surfaces over, single unit ceramic Butler sink with mixer tap, integrated Neff dishwasher, integrated washing machine, integrated low level fridge and freezer, Rangemaster combination triple oven and five ring induction hob with extractor fan; low level electric heater, Karndean flooring, inset spotlights, various power points.

Inner Hall

Carpeted flooring, stairs to first floor landing, ceiling mounted light fixture.

Living Room

20'0" x 18'0" (6.1m x 5.5m)

Partly glazed UPVC door and double glazed UPVC bay circular bay window to rear aspect, dual double glazed UPVC Velux windows, two wall mounted radiators, access to understairs storage, wood burning fireplace with timber surround and granite hearth, carpeted flooring, wall mounted light fixtures, ceiling mounted light fixtures, various power points.

Dining Room / Study

13'9" x 9'2" (4.2m x 2.8m)

Double glazed UPVC window to front aspect, carpeted flooring, wall mounted radiator, ceiling mounted light fixture, various power points.

First Floor Landing

Access via carpeted stairs with timber bannister, double glazed UPVC window to rear aspect, timber balustrade, carpeted flooring, wall mounted radiator, with timber cover, stairs to second floor, ceiling mounted light fixture, various power points.





Bedroom Two

10'5" x 9'10" (3.2m x 3.0m)

Double glazed UPVC window to front aspect, wall mounted radiator, carpeted flooring, access to two separate wardrobes, feature fireplace with timber mantle and surround, ceiling mounted light fixture, various power points.

Bedroom Three

11'1" x 8'6" (3.4m x 2.6m)

Double glazed UPVC window to front aspect, wall mounted radiator, carpeted flooring, access to storage cupboard and separate wardrobe, feature fireplace with timber mantle and surround, ceiling mounted light fixture, various power points.

Family Bathroom

Double glazed UPVC window to front aspect, four-piece suite comprising: low level WC, panel enclosed bath with mixer tap and shower attachment, vanity bowl wash hand basin with mixer tap and low level storage, panel enclosed corner shower with rainfall head and sliding glass door; wood laminate flooring, wall mounted mirror, inset spotlights.

Second Floor Landing

7'10" x 3'3" (2.4m x 1.0m)

Access via carpeted stairway, carpeted flooring, ceiling mounted light fixture. Door to:

Principal Bedroom

16'8" x 11'1" (5.1m x 3.4m)

Double glazed UPVC window to front and rear aspects, two wall mounted radiators, carpeted flooring, range of in-built wardrobes, access to airing cupboard/eves storage, ceiling mounted light fixture, various power points. Door to:

En-Suite

Double glazed UPVC window to front aspect, three-piece suite comprising: low level WC, vanity bowl wash hand basin with mixer tap and low level storage, panel enclosed corner shower with rainfall head and sliding glass door; wood laminate flooring, access to over stairs storage, wall mounted mirror, inset spotlights.

Front & Rear Gardens

Access to the front garden via a shared access flagstone pathway leading to patio area and property entrance, a low level timber picket fence and gate grants access to the

