



Ground Floor
Approximate Floor Area
2,067 sq. ft.
(192.0 sq. m.)



First Floor
Approximate Floor Area
1,550 sq. ft.
(144.0 sq. m.)

Whilst every attempt has been made to ensure the accuracy of the floor plan contained here, measurements of doors, windows, rooms and any other items are approximate and no responsibility is taken for any error, omission, or mis-statement. This plan is for illustrative purposes only and should be used as such by any prospective purchaser or tenant. The services, systems and appliances shown have not been tested and no guarantee as to their operability or efficiency can be given.
Copyright V360 Ltd 2019 | www.houseviz.com



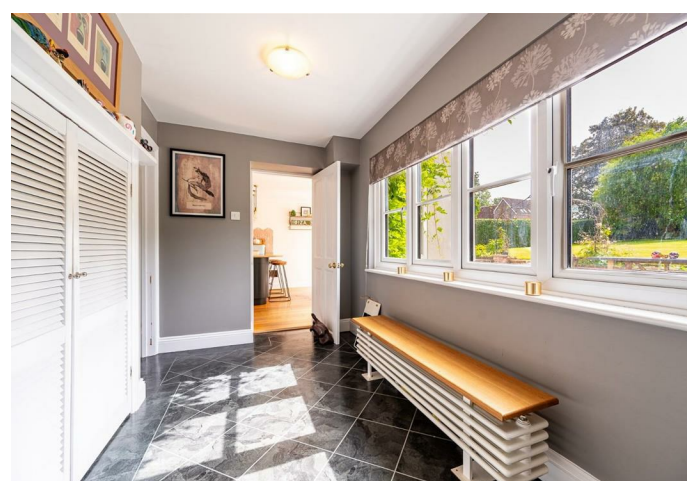
Daniel Brewer

51 High Street
Great Dunmow
Essex, CM6 1AE

Telephone • 01371 856585
Website • www.danielbrewer.co.uk
E-mail • info@danielbrewer.co.uk

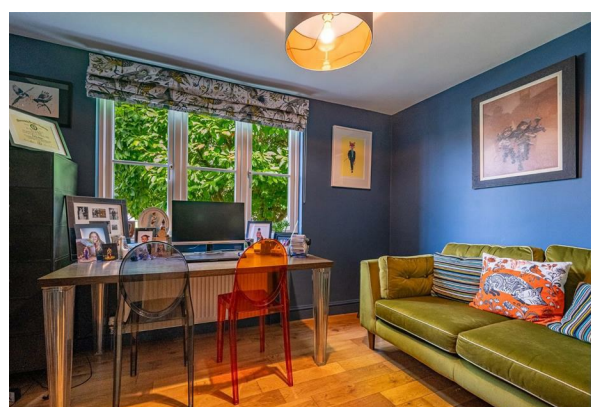
MILL END, LITTLE EASTON, DUNMOW

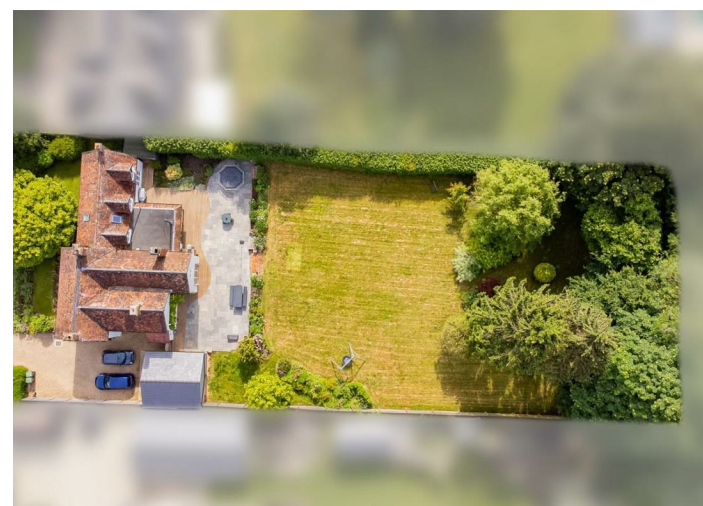
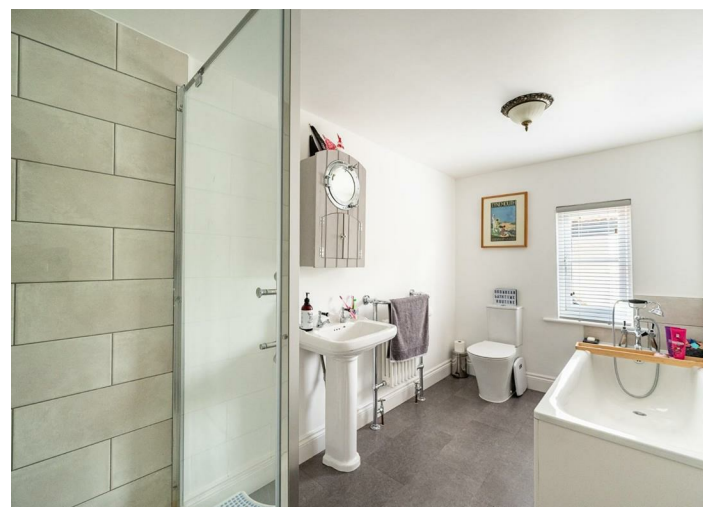
£1,175,000



MILL END LITTLE EASTON DUNMOW

Set within approximately half an acre in the much sought after village of Little Easton is this substantial five bedroom detached country home offering 3,600 square feet of modern living accommodation. The ground floor layout comprises:- lounge, dining room, study, kitchen/breakfast room, family room and utility room. On the first floor are five bedrooms with dressing room and en-suite to master, family bathroom and a shower room. Externally the property boasts ample driveway parking, a double bay cart lodge and landscaped gardens.





shower enclosure, Victorian style heated towel rail, window to side aspect, ceiling light point, extractor fan.

Shower Room

Fitted with a three piece suite comprising:- Glazed shower cubicle, vanity mounted wash hand basin, low level WC, ceiling light point, extractor fan, traditional heated towel rail, window to side aspect.

Frontage & Driveway

Immediately to the side of the property is driveway parking for numerous vehicles which in turn leads to the double bay carport. The front garden is retained by a low level brick wall with established flower bed borders, a paved pathway grants access to the front door.

Garden

The rear garden commences with a large paved patio area with brick retaining wall enclosing well stocked raised flower beds. Steps leads to the remainder of the garden which is laid to lawn with a selection of well stocked beds and an assortment of well established trees.

- Detached Country Home
- Five Bedrooms
- Three Receptions & Office
- L-Shaped Kitchen/Dining/Family Room
- Utility Room & Boot Room
- En-Suite, Shower Room & Bathroom
- Approximately Half An Acre
- Driveway Parking & Double Carport
- 3,600 Square Feet Of Accommodation
- Sought After Village

Entrance Hall

15'1 x 13'7 (4.60m x 4.14m)
Via a composite front door:- Wooden flooring, built-in dresser, coving to ceiling, radiator, wall light points, various power outlets, built-in storage cupboard, ornate built in cupboards, wood burning stove, stairs to first floor landing. Doors leading to:-

Kitchen / Dining Room

26'2 x 11'11 (7.98m x 3.63m)
Fitted with a range of eye and base level units with quartz working surfaces over, inset twin sink and drainer, integrated dishwasher, four over Aga, freestanding fridge/freezer, wooden flooring, inset down lighters, television point, bi-fold doors to rear garden, window to side aspect, various power points, built in larder cupboard. Opening to:-

Family Room

16'1 x 15'2 (4.90m x 4.62m)
Full height glazed windows to dual aspect, French doors to the garden, floor mounted wood burning stove, wooden flooring continued, exposed brickwork, television point, radiator, inset down lighters, inset light tunnels, television point, various power outlets.

Lounge

21'5 x 17'4 (6.53m x 5.28m)
Windows to dual aspect, brick built fireplace fitted with a wood burning stove, television point, various power outlets, wall light points, two radiators.

Dining Room

15'1 x 13'7 (4.60m x 4.14m)
Windows to dual aspect, red brick open fireplace, built in dresser, coving to ceiling, two radiators, ceiling light point, various power outlets.

Study

10'7 x 8'0 (3.23m x 2.44m)
Window to front aspect, wooden flooring, radiator, various power outlets.

Cloakroom

Fitted with a two piece suite comprising:- Vanity mounted wash hand basin, low level W.C, part wood panelled walls, radiator, wooden flooring, ceiling light point.

Utility Room

13'5" x 13" (4.09m x 3.96m)
Fitted with eye and base level units, inset sink and drainer, radiator, vinyl flooring, windows to side aspect, ceiling light point. Door leading to





Rear Lobby

Vinyl Flooring, built in storage cupboard, ceiling light point. Door leading to:-

Rear Porch

Coconut matt flooring, ceiling light point, window to side aspect, door leading to driveway.

First Floor Landing

Ceiling light point, loft access, carpeted flooring, two radiators, power points. doors leading to:-

Principal Bedroom

19' x 14'8 (5.79m x 4.47m)

Two windows to rear aspect with fitted shutters, Velux windows to dual aspect, inset down lighters, carpeted flooring, radiator, various power outlets. Door leading to:-

Dressing Room

11'10 x 6'3 (3.61m x 1.91m)

Fitted with both hanging rails and shelving, inset down lighters, carpeted flooring. Door leading to:-

En-suite

Fitted with a three piece comprising:- Fully tiled walk in shower enclosure, cantilever WC, vanity mounted wash hand basin., heated towel rail, tiled wood effect flooring, window to rear aspect.

Bedroom Two

19'11 x 11'9 (6.07m x 3.58m)

Windows to multiple aspects, carpeted flooring, feature cast iron fireplace, ceiling light point, two radiators, various power outlets, ceiling light point.

Bedroom Three

15'2 x 13'5 (4.62m x 4.09m)

Window to front aspect, a range of built in wardrobes with shelving, feature cast iron fireplace, radiator, carpeted flooring, built-in wardrobe, ceiling light point, various power outlets.

Bedroom Four

11'9 x 10'1 (3.58m x 3.07m)

Window to front aspect, radiator, carpeted flooring, fitted wardrobes, various power outlets, ceiling light point.

Bedroom Five

12'6 x 8'4 (3.81m x 2.54m)

Window to side aspect, radiator, feature cast iron fireplace, ceiling light point, carpeted flooring.

Family Bathroom

Fitted with a four piece suite comprising:- Panel enclosed bath, pedestal wash hand basin, low level WC, glazed

