

DANIEL BREWER

51 High Street
Great Dunmow
Essex, CM6 1AE

Telephone • 01371 856585
Website • www.danielbrewer.co.uk
E-mail • info@danielbrewer.co.uk



Daniel Brewer

51 High Street
Great Dunmow
Essex, CM6 1AE

Telephone • 01371 856585
Website • www.danielbrewer.co.uk
E-mail • info@danielbrewer.co.uk

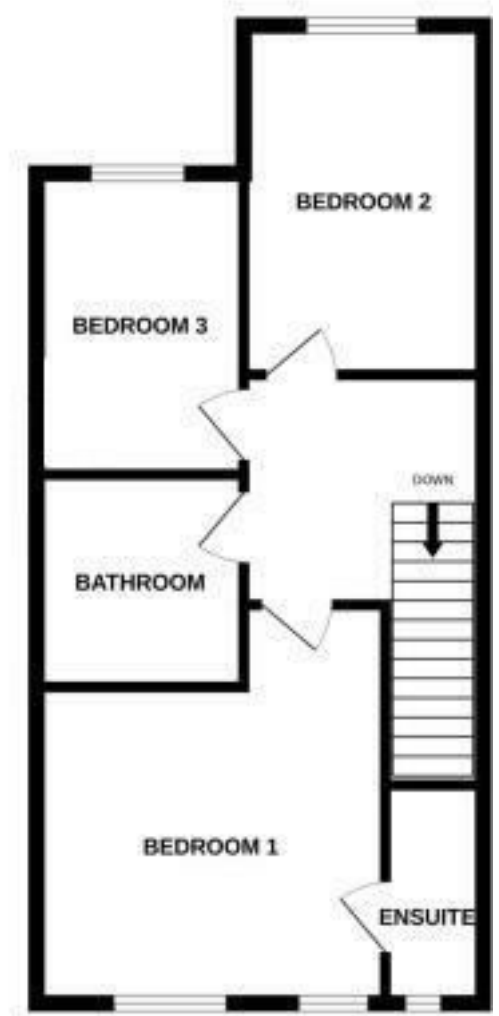
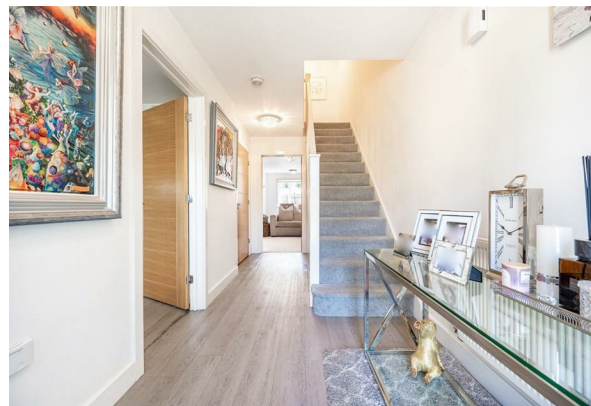
CLOVER DRIVE, LITTLE CANFIELD, DUNMOW

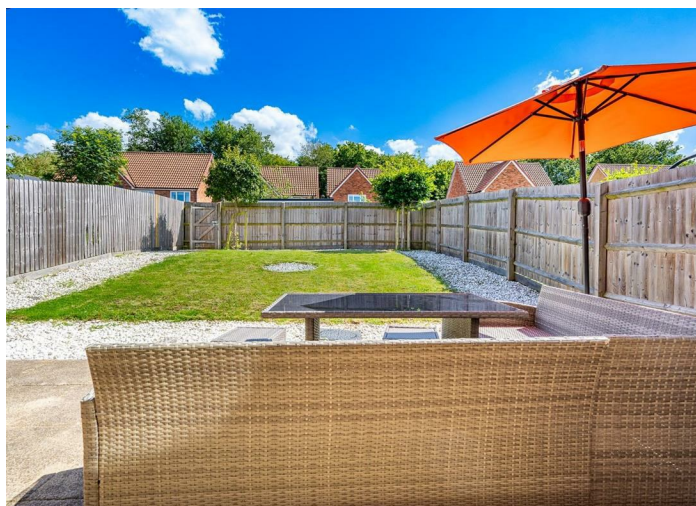
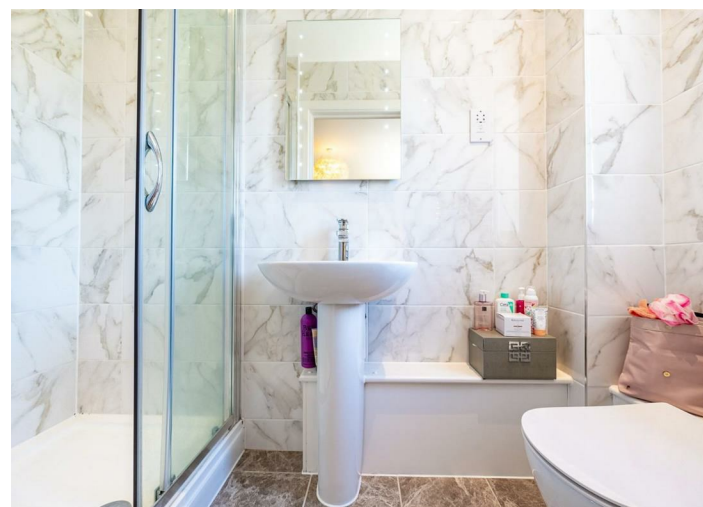
OFFERS OVER £425,000



**CLOVER DRIVE
LITTLE CANFIELD
DUNMOW**

Located on a small development in the conveniently located village of little Canfield is this stunning three bedroom detached family home boasting a generous south facing garden. The ground floor accommodation comprises:- lounge/dining room, kitchen, cloakroom and entrance hall. On the first floor are three bedrooms with en-suite facilities to the principal bedroom and a family bathroom. Externally the property further boasts a single garage with driveway parking and additional visitor parking.





- Three Bedrooms
- Detached Family Home
- Single Garage With Driveway & Additional Visitor Parking
- Generous South Facing Rear Garden
- Small Development OF Twelve Properties
- Lounge/Dining Room
- Kitchen
- Entrance Hall & Cloakroom
- En-Suite & Family Bathroom
- Walking Distance To The Historic Flitch Way

Entrance Hall

Wood effect flooring, radiator, power points, telephone point, stairs rising to the first floor landing, door to understairs storage cupboard, doors to.

Cloakroom

W.C, wash hand basin with pedestal, radiator, wood effect flooring, extractor fan.

Kitchen

11'5" x 9'8" (3.48m x 2.95m)

UPVC double glazed window to front aspect, base and eye level units with complimentary working surfaces over, inset sink with drainer unit, inset oven, induction hob with extractor over, integrated dishwasher, integrated washing machine, integrated fridge/freezer, inset spotlights, power points, wood effect flooring.

Lounge/Dining Room

18' x 16'3" (5.49m x 4.95m)

UPVC double glazed French doors leading to the rear garden, UPVC double glazed window to rear aspect, radiator, power points, T.V point, built-in storage cupboard.

First Floor Landing

Radiator, power points, door to airing cupboard, loft access, doors to.

Principal Bedroom

12'8" x 11'4" (3.86m x 3.45m)

UPVC double glazed windows to front aspect, radiator, power points, T.V point, door to.





En-Suite

UPVC double glazed opaque window to front aspect, enclosed shower with glass enclosure, W.C, wash hand basin with pedestal, W.C, wall mounted LED vanity mirror, fully tiled, inset spotlights, extractor fan.

Bedroom Two

12'5" x 8'6" (3.78m x 2.59m)

UPVC double glazed window to rear aspect, radiator, power points.

Bedroom Three

10'9" x 7'4" (3.28m x 2.24m)

UPVC double glazed window to rear aspect, radiator, power points.

Family Bathroom

Enclosed bath with mixer taps & shower attachment, separate shower over with glass screen, W.C, wash hand basin with pedestal, heated towel rail, wall mounted LED vanity mirror, part tiled walls, tiled flooring, inset spotlights, extractor fan.

Single Garage With Driveway & Visitor Parking

To the side of the property is a single garage with up & over door, power, lighting, pitched roof for storage, single door to rear aspect. To the front of the garage is a block paved driveway. To the rear of the property is visitor parking spaces.

Garden

To the rear of the property is a patio area leading to the remainder lawn with a stone border and two trees. The garden further benefits from an external water tap and rear access via a timber gate.

