

DANIEL BREWER

51 High Street
Great Dunmow
Essex, CM6 1AE

Telephone • 01371 856585
Website • www.danielbrewer.co.uk
E-mail • info@danielbrewer.co.uk



Daniel Brewer

51 High Street
Great Dunmow
Essex, CM6 1AE

Telephone • 01371 856585
Website • www.danielbrewer.co.uk
E-mail • info@danielbrewer.co.uk

CAMPIONS COURT, CHEQUERS LANE, DUNMOW

£2,100,000



CAMPIONS COURT CHEQUERS LANE DUNMOW

Located in the centre of the bustling market town of Great Dunmow is this unique opportunity to acquire a gated complex of nine apartments with the freehold. On offer are eight two bedroom apartments and a further one bedroom top floor apartment. Four ground floor apartments boast private gardens and five apartments have private entrances. Externally the property further boasts 16 secure parking spaces, a covered bin store and communal gardens.





- Gated Complex Of Nine Luxury Apartments
- Eight Two Bedroom Apartments
- A Further One Bedroom Top Floor Apartment
- Constructed In 2006
- 16 Parking Spaces
- Four Private Gardens
- Covered Bin Store & Communal Gardens
- Five Apartments Benefit From Private Entrances
- Town Centre Location
- All Properties Are Let On AST's

1 Champions Court

Entrance Hall
 Lounge/Dining Room :- 18'8" x 12'
 Kitchen :- 12'1" x 6'4"
 Bedroom One :- 14'10" x 9'
 Bedroom Two :- 14'9" x 10'4"
 Bathroom

2 Champions Court

Entrance Hall
 Lounge/Dining Room :- 19' x 11'11"
 Kitchen :- 12'1" x 6'11"
 Bedroom One :- 13'3" x 8'4"
 En-Suite
 Bedroom Two :- 9'3" x 8'3"
 Bathroom
 Private Garden

3 Champions Court

Entrance Hall
 Lounge/Dining Room :- 18'10" x 9'10"
 Kitchen :- 13'6" x 11'11"
 Bedroom One :- 12'7" x 11'7"
 Bedroom Two :- 12'11" x 7'2"
 Bathroom

4 Champions Court

Entrance Hall
 Lounge/Dining Room :- 17'10" x 19'10"
 Kitchen :- 17'4" x 6'4"
 Bedroom One :- 12'10" x 9'9"
 En-Suite
 Bedroom Two :- 9'1" x 9'
 Bathroom
 Private Garden

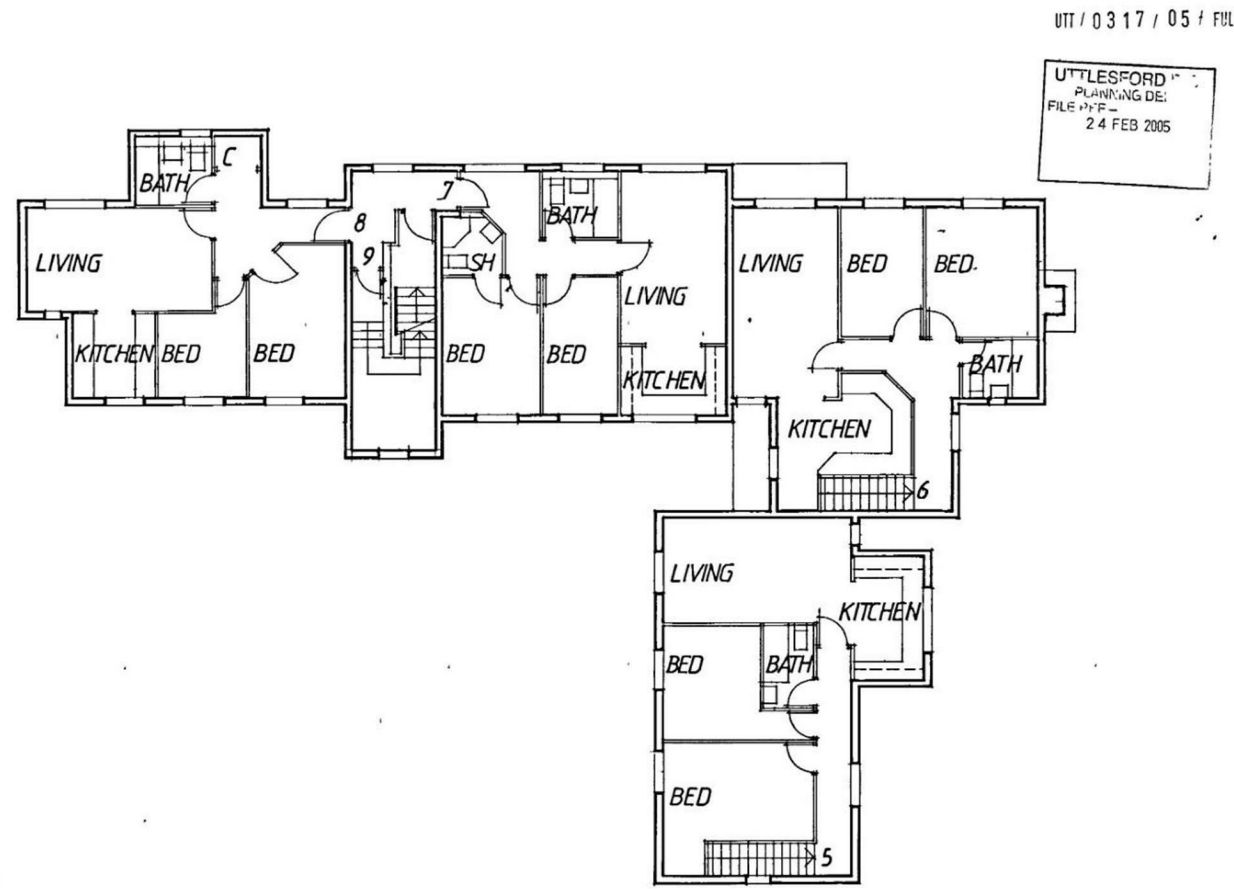
5 Champions Court

Entrance Hall
 Lounge/Dining Room :- 18'3" x 10'6"
 Kitchen :- 7'10" x 7'10"
 Bedroom One :- 15' x 8'2"
 En-Suite
 Bedroom Two 9' x 7'10"
 Bathroom

6 Champions Court

Entrance Hall
 Lounge/Dining Room :- 18'3" x 10'6"
 Kitchen :- 7'10" x 7'10"
 Bedroom One :- 15' x 8'2"
 Bedroom Two :- 9' x 7'10"
 Bathroom





FIRST FLOOR PLAN 1:100

4

7 Champions Court

- Entrance Hall
- Lounge/Kitchen/Dining Room :- 17'4" x 12'1"
- Bedroom One :- 10'11" x 9'11"
- Bathroom 11' x 5'

8 Champions Court

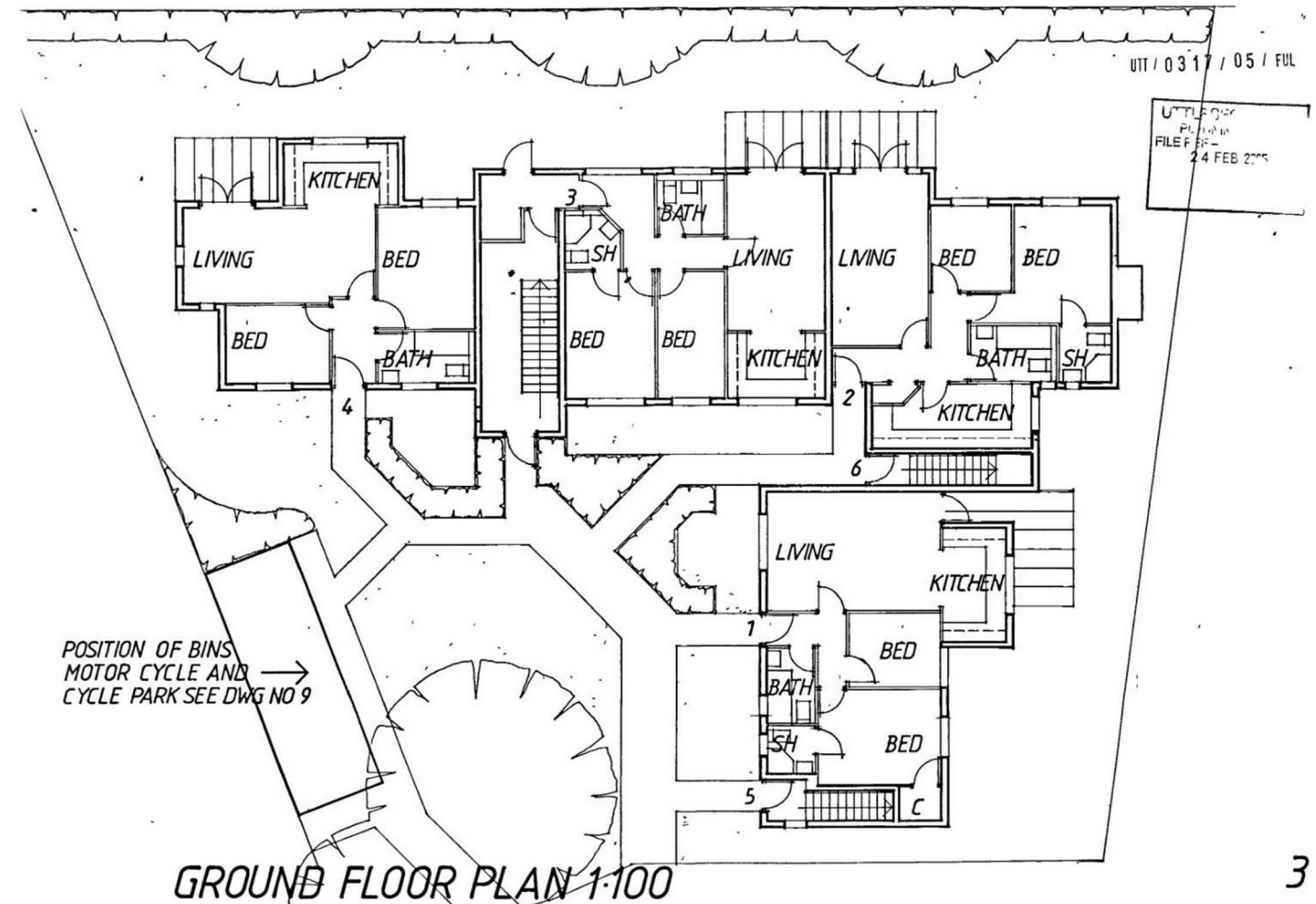
- Entrance Hall
- Lounge/Dining Room :- 16'10" x 9'10"
- Kitchen :- 9'10" x 6'5"
- Bedroom One :- 13'5" x 9'3"
- En-Suite
- Bedroom Two :- 11'2" x 7'
- Bathroom
- Private Garden

9 Champions Court

- Entrance Hall
- Lounge/Dining Room :- 16'9" x 9'10"
- Kitchen :- 9'10" x 6'5"
- Bedroom One :- 13'4" x 9'3"
- Bedroom Two :- 11'11" x 7'
- Bathroom
- Private Garden

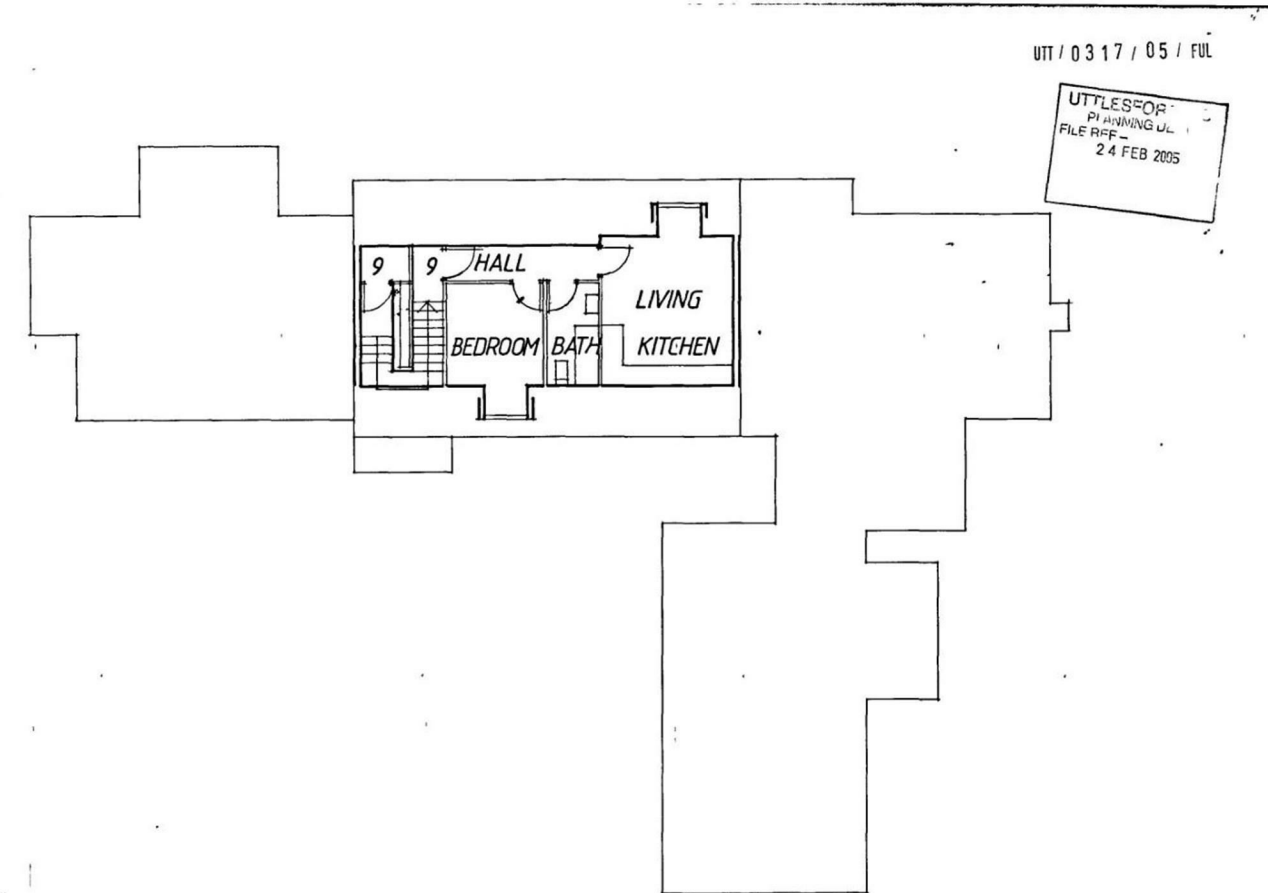
External

To the front of the property is sixteen allocated parking spaces with access via an electric sliding gate. To the front of the property is communal gardens with a communal bin store and paved pathways leading to the entrance doors. To the rear of four apartments are private gardens.



GROUND FLOOR PLAN 1:100

3



SECOND FLOOR PLAN 1:100

5