

Daniel Brewer

51 High Street
Great Dunmow
Essex, CM6 1AE

Telephone • 01371 856585
Website • www.danielbrewer.co.uk
E-mail • info@danielbrewer.co.uk

MAIN ROAD, FORD END, CHELMSFORD

OFFERS OVER £650,000

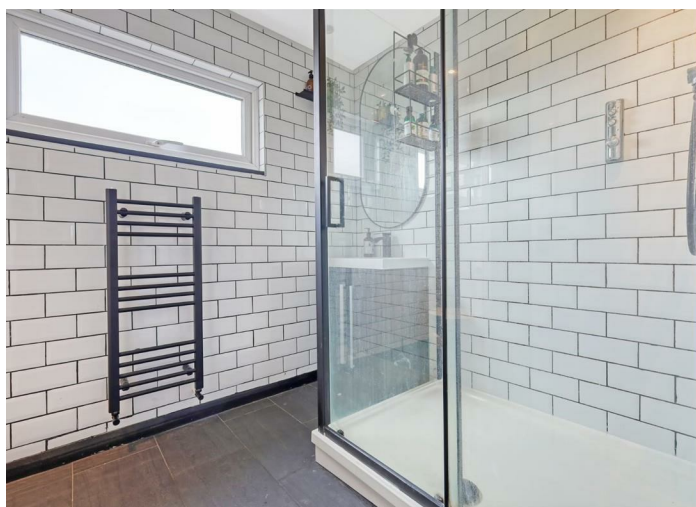


**MAIN ROAD
FORD END
CHELMSFORD**

No Onward Chain Located in the popular village of Ford End is this substantial four bedroom detached country home offering expansive accommodation over two floors with a flexible living layout. The ground floor accommodation comprises:- living room, dining room, snug, kitchen/breakfast room, utility room, cloakroom and entrance hall. On the first floor are four double bedrooms, a family bathroom and shower room. Externally the property boasts a double length garage, ample driveway parking and a generous rear garden.

Entrance Hall
Part wood panelled walls, wood effect flooring, radiator, power points, stairs rising to the first floor landing, doors to.





Shower Room

UPVC double glazed opaque window to side aspect, walk-in shower with rainfall head and glass enclosure, wash hand basin with vanity unit below, W.C, heated towel rail, fully tiled, inset spotlights, door to airing cupboard.

Gardens

To the rear of the property is a Sandstone patio area leading to the remainder lawn with Laurel hedging and a timber shed to the foot of the garden. Side access is granted via a timber gate. To the front of the property is a raised terrace area.

Double Length Garage With Driveway

To the front of the property is a block paved driveway providing parking for several vehicles leading to a double length garage. The double length garage boasts a single up & over door, power and lighting. The oil tank is accessed off the garage in the plant room.

- Four Double Bedrooms
- Detached Country Home
- Double Length Garage With Driveway Parking
- Generous Rear Garden
- Three Reception Rooms
- Kitchen/Breakfast Room
- Utility Room & Cloakroom
- Entrance Hall & Landing
- Bathroom & Shower Room
- No Onward Chain

Cloakroom

UPVC double glazed opaque window to side aspect, W.C, wash hand basin, heated towel rail, part tiled walls, tiled flooring.

Living Room

17'1" x 14'3" (5.21m x 4.34m)

UPVC double glazed window to front aspect, feature fireplace with inset wood burning stove, wood effect flooring, radiator, power points, T.V point, double doors to.

Dining Room

14'7" x 14'3" (4.45m x 4.34m)

UPVC double glazed opaque window to side aspect, radiator, wood effect flooring, power points, UPVC double glazed French doors leading to the rear garden, door to.

Snug

15'3" x 9'10" (4.65m x 3.00m)

UPVC double glazed windows to side aspect, radiator, power points, T.V point, UPVC double glazed French doors leading to a raised terrace area.

Kitchen/Breakfast Room

16'9" x 11'3" (5.11m x 3.43m)

UPVC double glazed window to rear aspect, base and eye level units with complimentary working surfaces over, island with breakfast area, inset 1 1/2 bowl sink with drainer unit, inset double oven, induction hob with extractor over, space for dishwasher, space for fridge/freezer, inset spotlights, tiled flooring, part tiled walls, radiator, sliding door to.

Inner Lobby

UPVC double glazed window to rear aspect, base and eye level units with complimentary working surface over, inset spotlights, power points, tiled flooring, built-in pantry, door to.





Utility Room

9'6" x 8'6" (2.90m x 2.59m)

UPVC double glazed windows to multiple aspects, full height units with space for washing machine & tumble dryer, tiled flooring, power points, UPVC single doors to front & rear aspect.

First Floor Landing

Part wood panelled walls, radiator, power points, loft access, doors to.

Principal Bedroom

14'3" x 13'1" (4.34m x 3.99m)

UPVC double glazed window to front aspect, a range of fitted wardrobes, radiator, power points.

Bedroom Two

12'8" x 11'6" (3.86m x 3.51m)

UPVC double glazed window to rear aspect, radiator, power points.

Bedroom Three

15'11" x 9'2" (4.85m x 2.79m)

UPVC double glazed window to rear aspect, built-in wardrobes, radiator, power points.

Bedroom Four

13' x 10'2" (3.96m x 3.10m)

UPVC double glazed window to front aspect, radiator, power points.

Family Bathroom

UPVC double glazed opaque window to side aspect, enclosed bath with mixer taps & shower attachment, separate shower over with rainfall head & glass screen, wash hand basin with vanity unit below, W.C, heated towel rail, part tiled walls, tiled flooring, inset spotlights.

