



**Daniel Brewer**

51 High Street  
Great Dunmow  
Essex, CM6 1AE

Telephone • 01371 856585  
Website • [www.danielbrewer.co.uk](http://www.danielbrewer.co.uk)  
E-mail • [info@danielbrewer.co.uk](mailto:info@danielbrewer.co.uk)

## BRIGNALL PLACE, DUNMOW

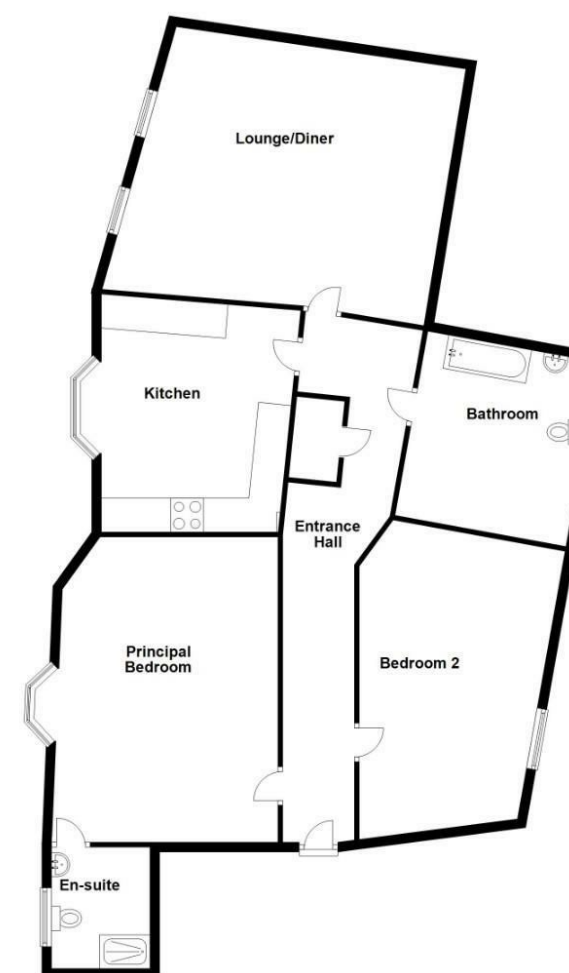
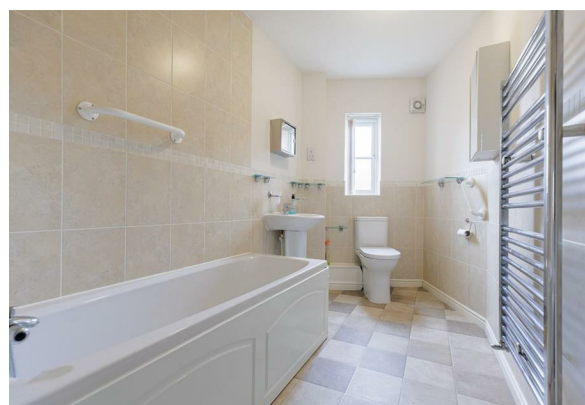
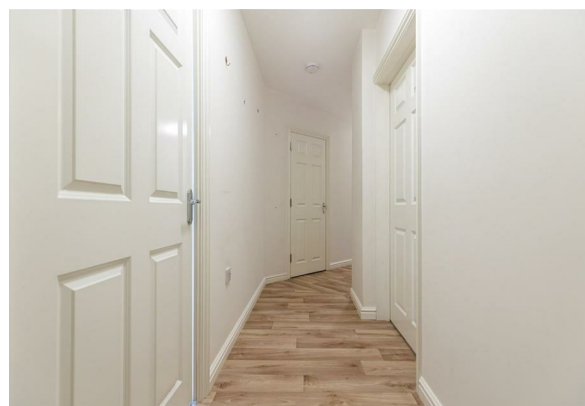
### OFFERS OVER £250,000



## BRIGNALL PLACE DUNMOW

Situated in the centre of the market town of Great Dunmow in a highly desirable complex is this luxury two bedroom ground floor apartment boasting allocated parking. The accommodation comprises:- lounge, kitchen/dining room, two bedrooms with en-suite to the master and a family bathroom.

The market town of Great Dunmow is a bustling town full of independent shops, restaurants and public houses/bars. The town centre is full of historic buildings with some stunning seating areas which include the renowned "Doctors Pond" at Talberds Ley. Some of Great Dunmow's facilities include:- leisure centre, various additional gyms, supermarkets, fantastic primary & secondary schools, parks . The town offers fantastic transport links to Stansted Airport, Chelmsford City and Bishop's Stortford.





- Two Bedrooms
- Ground Floor Apartment
- Town Centre Location
- Kitchen/Dining Room
- Lounge
- Kitchen
- En-Suite & Family Bathroom
- Allocated Parking

### **Entrance Hall**

Entrance via solid timber front door, access to airing cupboard, wall mounted radiator, vinyl wood effect flooring, ceiling mounted light fixture, various power points.

### **Kitchen**

13'5" x 11'9" (4.1m x 3.6m)

various base and eye level units with granite effect worksurfaces over, low level fan Electrolux oven, four ring gas Electrolux hob with extractor fan overhead, one and a half unit stainless steel sink with mixer tap and drainer unit, integrated fridge/freezer, integrated washer/drier, Kenwood dishwasher, splashback tiling, vinyl flooring, ceiling mounted spotlight array, various power points.

### **Lounge**

15'8" x 13'9" (4.8m x 4.2m)

Double glazed UPVC window to front aspect, wall mounted radiators, carpeted flooring, ceiling mounted light fixtures, TV point, various power points.

### **Principal Bedroom**

15'5" x 14'1" (4.7m x 4.3m)

Double glazed UPVC window to front aspect, wall mounted radiators, carpeted flooring, ceiling mounted light fixture, TV point, various power points. Door to:





#### **En-suite**

Double glazed UPVC frosted window to front aspect, three-piece suite comprising: low level WC, pedestal wash hand basin with mixer tap, corner tile enclosed shower with accordion glass door, wall mounted heated towel rail, partially tiled walls, vinyl flooring, ceiling mounted light fixture, shaver port, extractor fan.

#### **Bedroom Two**

10'5" x 10'2" (3.2m x 3.1m)

Double glazed UPVC window to rear aspect, wall mounted radiator, carpeted flooring, various power points.

#### **Family Bathroom**

Double glazed frosted UPVC window to rear aspect, three-piece suite comprising: low level WC, pedestal wash hand basin with mixer tap, wood panel enclosed bath with mixer tap and shower attachment, wall mounted heated towel rail, partially tiled walls, vinyl flooring, ceiling mounted light fixture, shaver port, extractor fan.

#### **Allocated Parking & Additional Information**

The property benefits from a gas central heating system, and allocated parking for one vehicle.

