



Daniel Brewer

51 High Street
Great Dunmow
Essex, CM6 1AE

Telephone • 01371 856585
Website • www.danielbrewer.co.uk
E-mail • info@danielbrewer.co.uk

OWERS PLACE, HIGH RODING, DUNMOW

OFFERS OVER £525,000

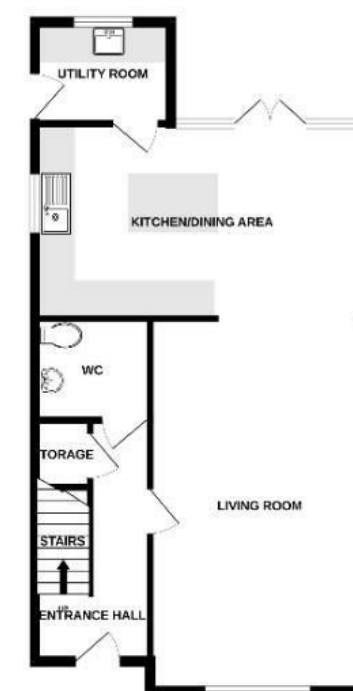


OWERS PLACE HIGH RODING DUNMOW

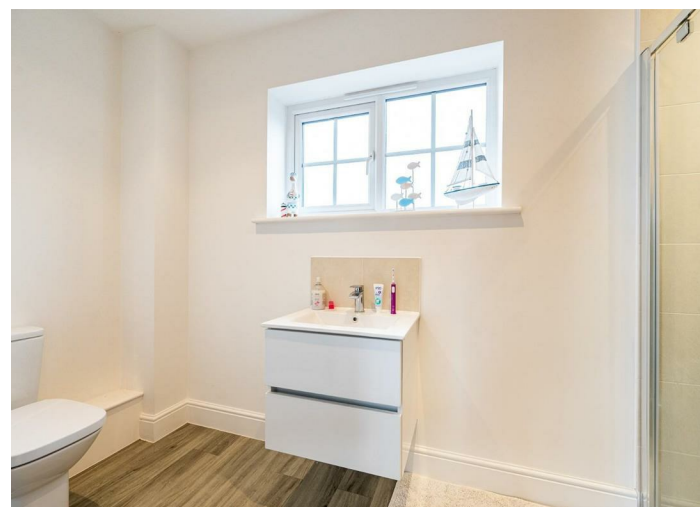
Located in the quiet village of High Roding is this substantial four bedroom townhouse boasting a single garage with carport. The ground floor accommodation comprises:- lounge, kitchen/dining room, utility room, cloakroom and entrance hall. On the first floor are two bedrooms with en-suite facilities. A further two bedrooms and a family bathroom are situated on the second floor. Externally the property boasts a landscaped garden.



GROUND FLOOR
633 sq.ft. (58.8 sq.m.) approx.



TOTAL FLOOR AREA : 1712 sq.ft. (159.1 sq.m.) approx.
Made with Metropix ©2024



Bedroom Four

16'2" x 6'3" (4.93m x 1.91m)
UPVC double glazed window to front aspect, radiator, power points.

Family Bathroom

Velux window to rear aspect, enclosed bath with mixer taps & shower attachment, W.C, wash hand basin, heated towel rail, inset spotlights, extractor fan, part tiled walls, wood effect flooring.

Garden

To the rear of the property is a Sandstone patio area leading to the remainder lawn with raised borders. A Sandstone paved pathway leads to the rear of the garden and garage. Side access is granted via a timber gate and the garden is fully enclosed by timber fencing.

Single Garage With Carport Driveway

To the side of the property is a carport leading to a single garage with up & over door, power, lighting, pitched roof for storage and a single door to side aspect.

- Four Bedrooms
- Substantial Townhouse
- Single Garage With Carport
- Landscaped Garden
- Lounge
- Kitchen/Dining Room
- Utility Room & Cloakroom
- Two En-Suites & Family Bathroom
- Viewing Advised
- Quiet Village Location

Entrance Hall

Coir matting, carpet with underfloor heating, understairs storage cupboard, stairs rising to the first floor landing, power points, door to.

Cloakroom

W.C, wash hand basin, inset spotlights, extractor fan, tiled flooring with underfloor heating.

Lounge

20'5" x 12'5" (6.22m x 3.78m)
UPVC double glazed window to front aspect, wood effect flooring with underfloor heating, power points, T.V point, telephone point, opening to.

Kitchen/Dining Room

18'8" x 10'8" (5.69m x 3.25m)
UPVC double glazed window to side aspect, base and eye level units with Quartz working surfaces over, complimentary island with Quartz working surface over & breakfast bar area, inset Neff double oven, electric hob with extractor over, inset sink with drainer unit, integrated dishwasher, integrated fridge/freezer, inset spotlights, tiled flooring with underfloor heating, power points, UPVC double glazed French doors leading to the rear garden, door to.

Utility Room

7'3" x 5'5" (2.21m x 1.65m)
UPVC double glazed window to rear aspect, base and eye level units with complimentary working surface over, space for washing machine, space for tumble dryer, inset spotlights, power points, tiled flooring with underfloor heating, single door leading to the rear garden.





First Floor Landing

UPVC double glazed window to front aspect, built-in double storage cupboard, power points, radiator, stairs rising to the first floor landing, doors to.

Principal Bedroom

13'11" x 12'5" (4.24m x 3.78m)

UPVC double glazed window to front aspect, radiator, power points, T.V point, door to.

En-Suite

UPVC double glazed Opaque window to rear aspect, walk-in oversized shower with rainfall head & additional attachment, wash hand basin with vanity unit below, W.C, heated towel rail, inset spotlights, extractor fan, wood effect flooring.

Bedroom Two

12' x 14'2" (3.66m x 4.32m)

UPVC double glazed window to front aspect, radiator, power points, door to.

En-Suite

UPVC double glazed Opaque window to rear aspect, walk-in oversized shower with rainfall head & additional attachment, wash hand basin with vanity unit below, W.C, heated towel rail, inset spotlights, extractor fan, wood effect flooring.

Second Floor Landing

Radiator, power points, doors to.

Bedroom Three

12'4" x 12' (3.76m x 3.66m)

UPVC double glazed window to front aspect, Velux window to rear aspect, radiator, power points.

