



Total area: approx. 257.7 sq. metres (2774.3 sq. feet)

Whilst every attempt has been made to ensure the accuracy of the floor plan, measurement of doors, windows and any other item are approximate and no responsibility is taken for any error, omission or misstatement. This plan is for illustrative purposes and only should be used as such.
Plan produced using PlanUp.



Daniel Brewer

51 High Street
Great Dunmow
Essex, CM6 1AE

Telephone • 01371 856585
Website • www.danielbrewer.co.uk
E-mail • info@danielbrewer.co.uk

STAGDEN CROSS, HIGH EASTER, CHELMSFORD

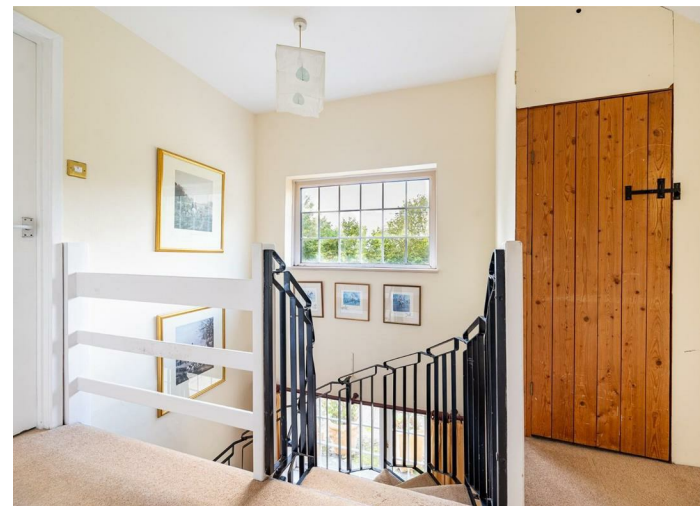
OFFERS OVER £800,000



**STAGDEN CROSS
HIGH EASTER
CHELMSFORD**

Set within a quarter of an acre in the quiet village of High Easter is this stunning six bedroom detached country home boasting a double garage and driveway parking. The ground floor accommodation comprises:- living room, family room, dining room, kitchen/breakfast room, utility room, cloakroom and entrance hall. On the first floor are five bedrooms with two en-suites and a shower room. The property further benefits from secluded wraparound gardens.





Double Garage With Driveway

To the side of the property is a double garage with a pitched roof for storage, power, lighting and single up & over door. To the front of the garage is driveway parking and additional gated driveway parking to the front of the property.

Wraparound Gardens

The wraparound gardens are mainly lawn with a rear patio area and is fully enclosed by mature hedging & timber fencing.

- Six Bedrooms Detached Country Home
- 2,744 Square Feet Of Accommodation
- Double Garage With Driveway Parking
- Quarter Of An Acre Plot
- Three Reception Rooms
- Kitchen/Breakfast Room
- Utility Room & Cloakroom
- Office
- Two En-Suites & Family Bathroom
- Potential To Extend (STP)

Entrance Hall

Two semi-bay windows to front aspect, wood effect flooring, inset spotlights, radiator, power points, doors to.

Cloakroom

W.C, wash hand basin with pedestal, extractor fan.

Dining Room

12'3" x 13'10" (3.73m x 4.22m)
Windows to multiple aspects, radiator, power points.

Family Room

18'4" x 12'5" (5.59m x 3.78m)
Two windows to rear aspect, feature fireplace, exposed timbers, two radiators, power points, T.V point.

Kitchen/Breakfast Room

15'2" x 13'10" (4.62m x 4.22m)
Windows to multiple aspects, base and eye level units with solid wood working surfaces over, inset 1 1/2 bowl sink with drainer unit, inset double oven, four ring electric hob, space for dishwasher, radiator, power points, inset spotlights, tiled flooring, single door to conservatory, door to.

Utility Room

9'1" x 7'10" (2.77m x 2.39m)
Window to side aspect, base level units with working surface over, inset sink with drainer unit, space for washing machine, floor mounted boiler, water cylinder & water pressure booster tank, power points.

Living Room

25'9" x 15'9" (7.85m x 4.80m)
Windows to multiple aspects, double sliding doors leading to the rear garden, feature fireplace with feature fireplace, radiator, power points, T.V point, spiral staircase, door to.

Study

10'4" x 4'11" (3.15m x 1.50m)
Window to side aspect, radiator, power points.

Conservatory

18'4" x 14'10" (5.59m x 4.52m)
Windows to rear aspect, two radiators, power points, door to side aspect.





First Floor Landing

Window to front aspect, power points, doors to.

Principal Bedroom

15'3" x 13'9" (4.65m x 4.19m)

Window to rear aspect, built-in triple wardrobe, radiator, power points, door to.

En-Suite

Opaque window to side aspect, enclosed bath with mixer taps & shower attachment, wash hand basin with pedestal, W.C, radiator, part tiled walls.

Bedroom Two

13'10" x 12'3" (4.22m x 3.73m)

Window to front aspect, built-in double wardrobe, built-in single wardrobe, radiator, power points, door to.

En-Suite

Enclosed shower with glass enclosure, wash hand basin, W.C, radiator, inset spotlights, extractor fan.

Bedroom Three

15'11" x 10' (4.57m x 3.05m)

Windows to multiple aspects, built-in double wardrobe, built-in single wardrobe, radiator, power points.

Bedroom Four

9'7" x 9'5" (2.92m x 2.87m)

Window to rear aspect, radiator, power points.

Bedroom Five

9'5" x 8'4" (2.87m x 2.54m)

Window to rear aspect, radiator, power points.

Bedroom Six

10'6" x 6'9" (3.20m x 2.06m)

Window to side aspect, radiator, power points.

Shower Room

Window to side aspect, enclosed shower with rainfall head & additional attachment, wash hand basin, W.C, radiator, tiled flooring.

