



Molasses House, Clove Hitch Quay SW11

---



# Molasses House, Clove Hitch Quay **SW11**

Situated along the Thames Path with breathtaking river views, this exceptional first floor, lateral apartment offers high quality finishes and a stylish design throughout. The dual aspect sitting room is a wonderful entertaining space, and features a balcony as well as a Juliette balcony, both of which overlook the river. The luxurious kitchen is a chef's dream with masses of storage, DeVOL aged brass taps, a copper butler's sink, Bosch appliances, a Stoves cooker with double oven, and Arabescato Verde polished marble worktops. The lighting is fully customisable with LED dimmers and colour change under-cabinet scene-setting options, creating the perfect ambiance for any occasion.



**Guide price:** £1,199,999

**Tenure:** Leasehold: approximately 963 years remaining

**Service charge:** £10,951.22 per annum, reviewed annually, next review due 2026

**Ground rent:** £500 per annum, reviewed annually, next review due 2026

**Local authority:** London Borough of Wandsworth

**Council tax band:** G

There are three double bedrooms, and two bathrooms. The spacious principal bedroom has an abundance of cleverly designed built in storage, including an incredible walk-in wardrobe, and there is a hidden ensuite bathroom. The bathrooms are both impressive spaces, with fully customisable LED dimmers and colour change lighting. They feature high-quality fixtures from Burlington Bathrooms and stunning marble from Artisans of Devizes.

The apartment benefits from Hyperoptic full fibre broadband, Sky sockets, lift access, CCTV, and a 24-hour concierge service located in The Plantation Wharf Management Office.

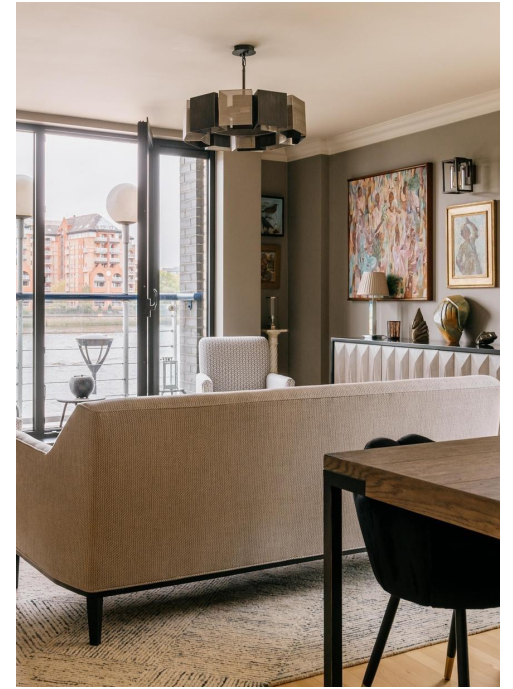
This fabulous apartment is a perfect blend of elegance and practicality, and has the added benefit of a dedicated parking bay in the secure underground car park, and a large private storage cage.

Clove Hitch Quay is well-connected to Central London and the surrounding areas. Clapham Junction station is 0.5 miles away, providing regular Overground and National Rail services to major destinations, including Gatwick Airport, Victoria and Waterloo, as well as connections across the Greater London area. Additionally, there are convenient bus routes nearby, linking Battersea to Central and Southwest London, while the Thames Clipper service at Plantation Wharf offers scenic and efficient river transport options to key stops along the Thames, including the city

Local residents enjoy being situated close to a variety of cafes, pubs, restaurants, and shops along the river and nearby Battersea Square, and Northcote Road. The luxury shopping and dining experiences at the iconic Battersea Power Station can also be accessed by the Thames Clipper, and are a welcome recent addition to the area. The 200 acres of green spaces of Battersea Park are easily accessible from the property, ideal for relaxation, jogging, and recreational activities, complete with a boating lake, lakeside cafe, sports courts, and a zoo.









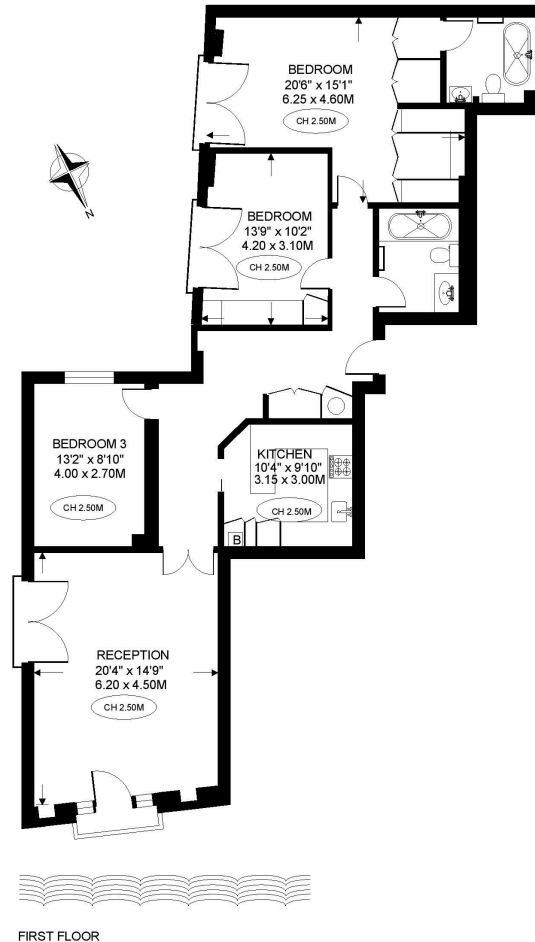




# Molasses House, SW11

**Approximate Internal Floor Area**  
**1,234 sq ft / 114.6 sq m**

This plan is for guidance only and must not be relied upon as a statement of fact. Attention is drawn to the important notice on the last page of the text of the Particulars.



FIRST FLOOR

**Knight Frank**

**Battersea**

346 Queenstown Road

London

SW17 7EB

[knightfrank.co.uk](https://www.knightfrank.co.uk)

**We would be delighted to tell you more**

**Sarah Gerrett**

020 3866 2924

[sarah.gerrett@knightfrank.com](mailto:sarah.gerrett@knightfrank.com)



Fixtures and fittings: A list of the fitted carpets, curtains, light fittings and other items fixed to the property which are included in the sale (or may be available by separate negotiation) will be provided by the Seller's Solicitors.

Important Notice: 1. Particulars: These particulars are not an offer or contract, nor part of one. You should not rely on statements by Knight Frank LLP in the particulars or by word of mouth or in writing ("information") as being factually accurate about the property, its condition or its value. Neither Knight Frank LLP nor any joint agent has any authority to make any representations about the property, and accordingly any information given is entirely without responsibility on the part of the agents, seller(s) or lessor(s). 2. Photos, Videos etc: The photographs, property videos and virtual viewings etc. show only certain parts of the property as they appeared at the time they were taken. Areas, measurements and distances given are approximate only. 3. Regulations etc: Any reference to alterations to, or use of, any part of the property does not mean that any necessary planning, building regulations or other consent has been obtained. A buyer or lessee must find out by inspection or in other ways that these matters have been properly dealt with and that all information is correct. 4. VAT: The VAT position relating to the property may change without notice. 5. To find out how we process Personal Data, please refer to our Group Privacy Statement and other notices at <https://www.knightfrank.com/legals/privacy-statement>. Particulars dated 12/11/2024. Photographs and videos dated 12/11/2024.

All information is correct at the time of going to print. Knight Frank is the trading name of Knight Frank LLP. Knight Frank LLP is a limited liability partnership registered in England and Wales with registered number OC305934. Our registered office is at 55 Baker Street, London W1U 8AN. We use the term 'partner' to refer to a member of Knight Frank LLP, or an employee or consultant. A list of members names of Knight Frank LLP may be inspected at our registered office. If you do not want us to contact you further about our services then please contact us by either calling 020 3544 0692, email to [marketing.help@knightfrank.com](mailto:marketing.help@knightfrank.com) or post to our UK Residential Marketing Manager at our registered office (above) providing your name and address.