



Shearwater Drive, London, NW9 7AG

£2,100 Per Week -

A rare opportunity to live in this pristine 2 bed, 2 bath apartment with amazing lake views from its own private wraparound balcony. The flat comes with a big living area complete with a modern, fully fitted open plan kitchen. There are 2 good sized bedrooms, 1 with en Suite. It also comes with underground Parking space and a lift.

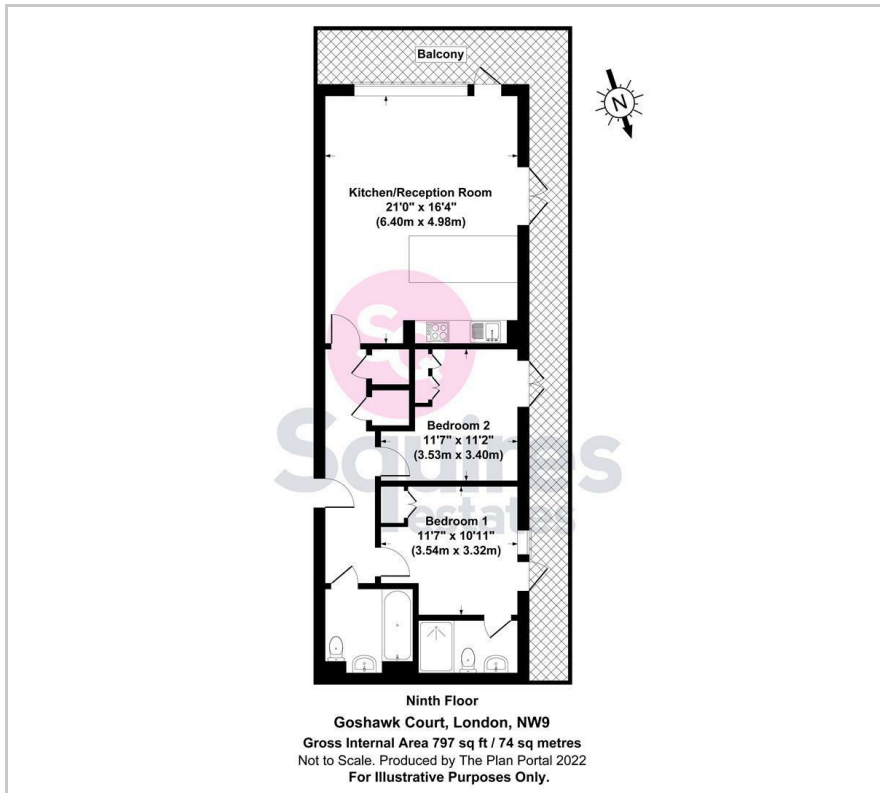
Ideally located in a modern development in West Hendon. The building also comes complete with a gorgeous communal roof terrace.

Offered Part Furnished and available from 7th September 2024

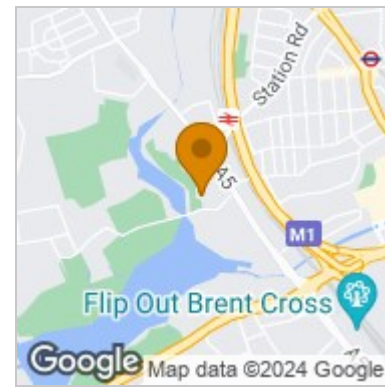
EPC Band C
Barnet Council Tax Band D
Deposit £2,423

- 2 Bedrooms
- 2 Bathrooms
- Council tax band D
- Wraparound Balcony
- Communal Roof Terrace
- Underground Parking
- Part Furnished
- Available 07/09/2024

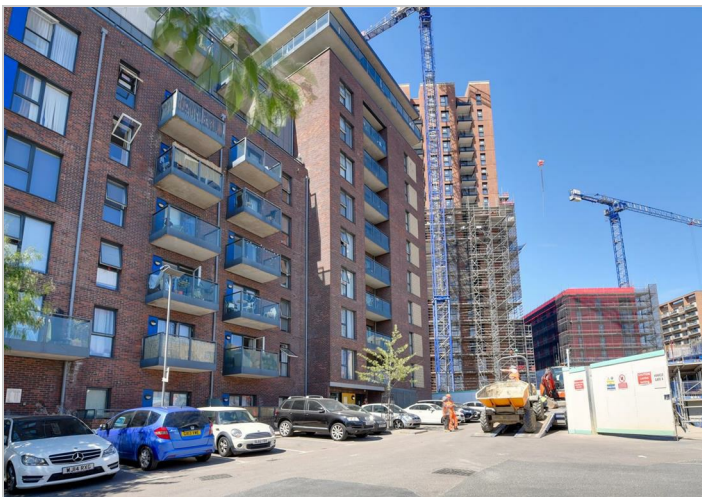
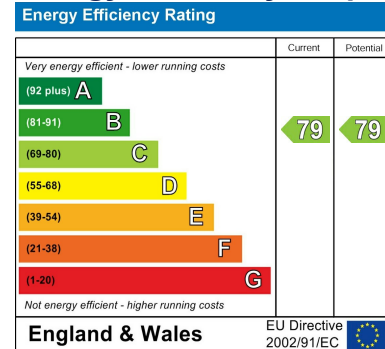
Floor Plan



Area Map



Energy Efficiency Graph



These particulars, whilst believed to be accurate are set out as a general outline only for guidance and do not constitute any part of an offer or contract. Intending purchasers should not rely on them as statements of representation of fact, but must satisfy themselves by inspection or otherwise as to their accuracy. No person in this firm's employment has the authority to make or give any representation or warranty in respect of the property.

Finchley Branch

181a Squires Lane,
Finchley,
London N3 2QS
Tel 020 8343 2111

Hendon Branch

16 Central Circus Parade,
Queens Road, Hendon,
London NW4 3AS
Tel 020 8202 0808

Mill Hill Branch

7 Thornfield Parade,
Holders Hill Road, Mill Hill,
London NW7 1LN
Tel 020 8349 3030

