

www.squiresestates.co.uk
SALES • LETTINGS • MANAGEMENT



Tenterden Drive, London, NW4 1ED

£4,250 Per Month -

An exceptional five bedroom fully extended semi-detached family home arranged over three floors.

The property has a great amount of space, offering a large open plan modern kosher fitted kitchen, breakfast room, through lounge, dining room, built in sukkah, home office, utility room and guest wc on the ground floor.

Four bedrooms on the first floor one with an en suite shower room, separate family bathroom. The master bedroom is on the top floor with large en suite bathroom.

Further benefits include off street parking for two cars, large lawn garden, close to transport links into central London, as well as being close to local schools, synagogues, shops and amenities.

Offered unfurnished and available from 30/08/2024.

Barnet Council Tax Band F
Deposit £4903

- Family home
- 5 bedrooms
- Large fully fitted kosher kitchen
- Utility room
- Built in sukkah
- Study
- Garden
- Parking
- Barnet Council Tax Band F
- Available from 30/08/2024



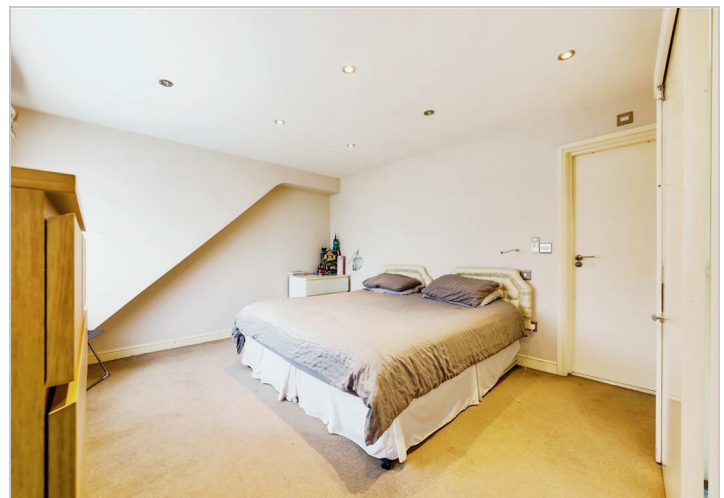
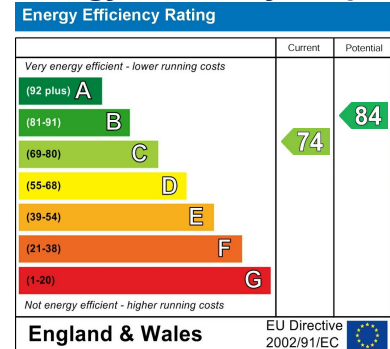
Floor Plan



Area Map



Energy Efficiency Graph



These particulars, whilst believed to be accurate are set out as a general outline only for guidance and do not constitute any part of an offer or contract. Intending purchasers should not rely on them as statements of representation of fact, but must satisfy themselves by inspection or otherwise as to their accuracy. No person in this firm's employment has the authority to make or give any representation or warranty in respect of the property.

Finchley Branch

181a Squires Lane,
Finchley,
London N3 2QS
Tel 020 8343 2111

Hendon Branch

16 Central Circus Parade,
Queens Road, Hendon,
London NW4 3AS
Tel 020 8202 0808

Mill Hill Branch

7 Thornfield Parade,
Holders Hill Road, Mill Hill,
London NW7 1LN
Tel 020 8349 3030

