



Colin Drive, London, NW9 6ES

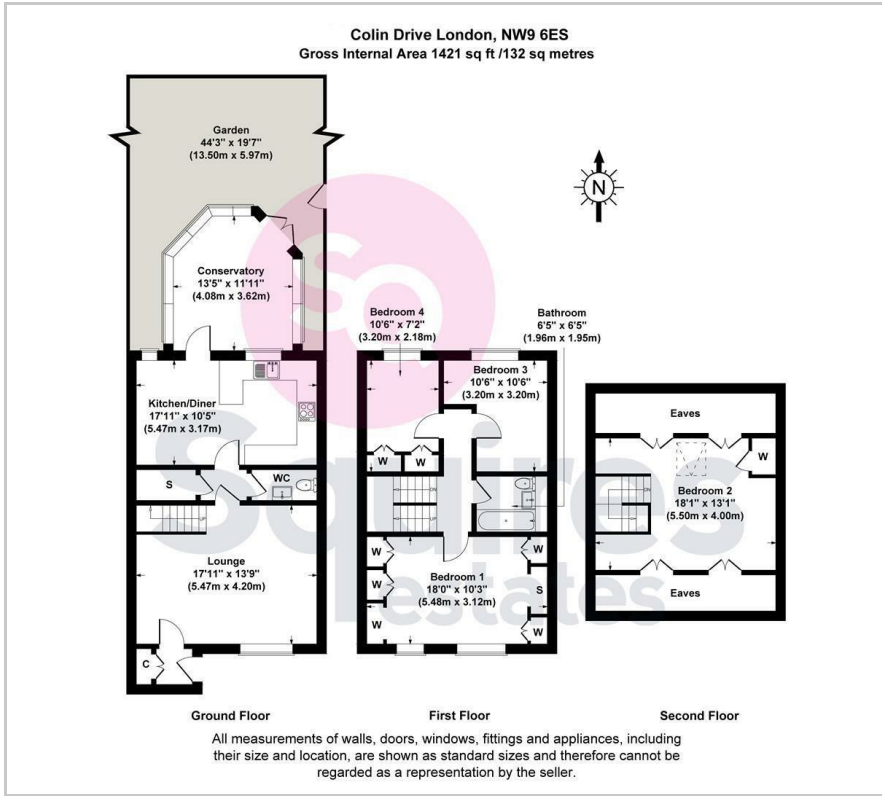
£615,000 - Freehold

****CHAIN FREE**** This spacious four bedroom end of terrace house situated in a popular residential cul-de-sac in Colindale. This wonderful family home spread across three floors has a large reception room, leading onto a fully fitted modern eat in kitchen, conservatory and guest wc downstairs. Three bedrooms on the first floor with family bathroom and a large loft bedroom on the top floor. Beautifully maintained front and rear garden. This property is perfect for someone looking to make it their own.

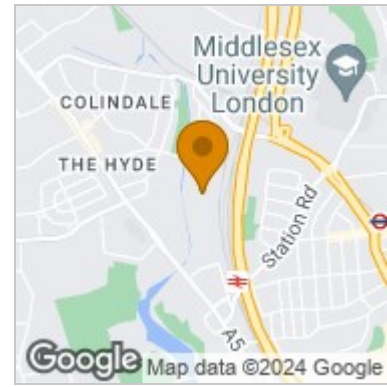
Phone Squires Estates today to book a viewing.

- Chain free
- Freehold
- 4 bedrooms
- Conservatory
- Garden
- Barnet council tax band d

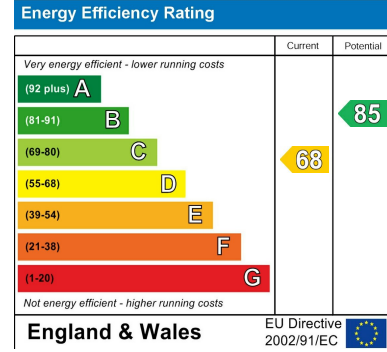
Floor Plan



Area Map



Energy Efficiency Graph



These particulars, whilst believed to be accurate are set out as a general outline only for guidance and do not constitute any part of an offer or contract. Intending purchasers should not rely on them as statements of representation of fact, but must satisfy themselves by inspection or otherwise as to their accuracy. No person in this firm's employment has the authority to make or give any representation or warranty in respect of the property.

Finchley Branch
 181a Squires Lane,
 Finchley,
 London N3 2QS
 Tel 020 8343 2111

Hendon Branch
 16 Central Circus Parade,
 Queens Road, Hendon,
 London NW4 3AS
 Tel 020 8202 0808

Mill Hill Branch
 7 Thornfield Parade,
 Holders Hill Road, Mill Hill,
 London NW7 1LN
 Tel 020 8349 3030

