

1,518 square foot, 3 bedroom, 2 bathroom energy efficient new homes with build completion any day now.

Stunning semi-detached new home with open plan ground floor comprising high specification kitchen, spacious sitting/dining room with vaulted ceiling and roof lantern, separate utility room and cloakroom with WC. There are 2 double bedrooms and a luxurious bathroom on the first floor with the master suite on the second floor with en-suite. There is a delightful rural aspect to the front of the houses, the gardens face south and each house has 2 off road parking spaces. Build completion target is end of June.

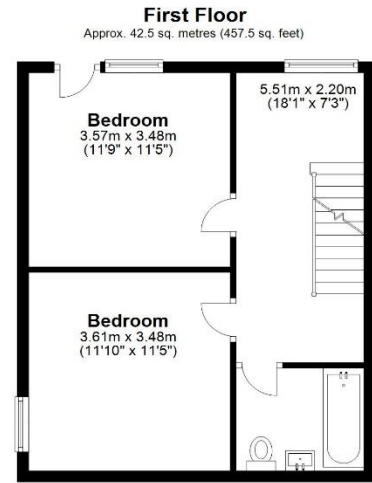
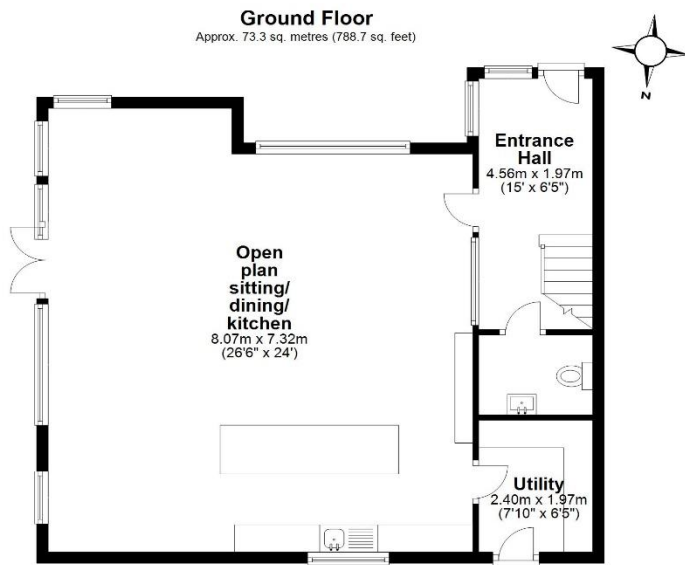


GUIDE PRICE £665,000

1A & B Castle Drive, Reigate, Surrey, RH2 8DQ



- 3 double bedrooms over 1st and 2nd floor.
- Stunning open plan ground floor with vaulted ceiling.
- High specification fitted kitchen with central island housing hob and breakfast bar.
- Utility room.
- 2 bathrooms.
- Cloakroom with WC.
- South facing gardens to the side of each property.
- 2 parking spaces.
- Energy efficient with triple glazing.
- Build completion June 2023.
- 2 house development.



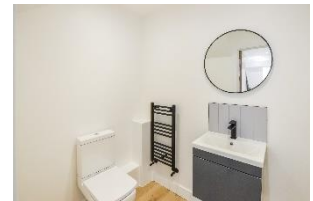
Total area: approx. 143.2 sq. metres (1541.9 sq. feet)

Produced by Lewis White, not to scale and indicative only
Plan produced using PlanUp.

Council tax band: TBC

EPC Rating: B

Bathroom picture is the suite not the layout.



PRS Property Redress Scheme

lewis white