



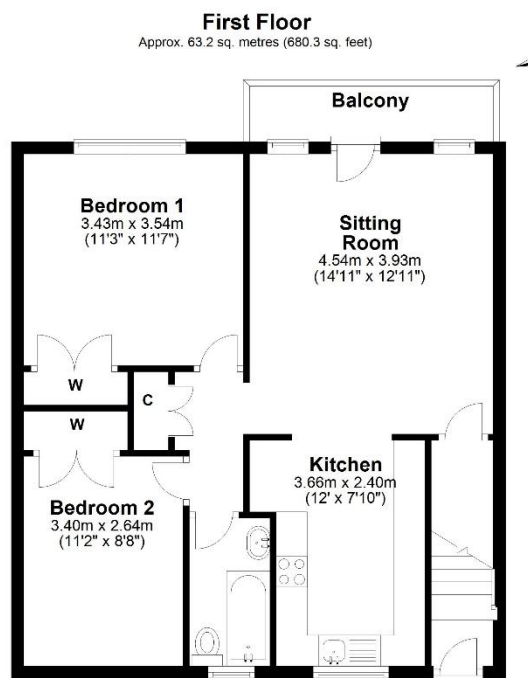
SPACIOUS 1ST FLOOR, 2 BEDROOM APARTMENT

6 Gayton Court, Somers Road, Reigate,
Surrey, RH2 0RJ.
£325,000

Bright and spacious first-floor apartment in the heart of Reigate only minutes away from local shops and Reigate train station. Featuring a generous sitting/dining room with balcony overlooking sunny south-facing communal gardens. Includes two large double bedrooms with fitted wardrobes, an updated contemporary kitchen, and a modern bathroom with white suite. Benefits from a 169-year lease, peppercorn ground rent, service charge £1,250 per annum, a single garage, and is offered chain-free.



lewis
white



Total area: approx. 63.2 sq. metres (680.3 sq. feet)

Produced by Lewis White, not to scale and indicative only
Plan produced using PlanUp.



169 year lease, maintenance charge of £1,250 per annum and peppercorn ground rent p/a. Council tax C, EPC E.