



## 4 BEDROOM DETACHED HOUSE WITH THE WOW FACTOR.

GUIDE PRICE £670,000

45 Redstone Hill, Redhill, RH1 4BG

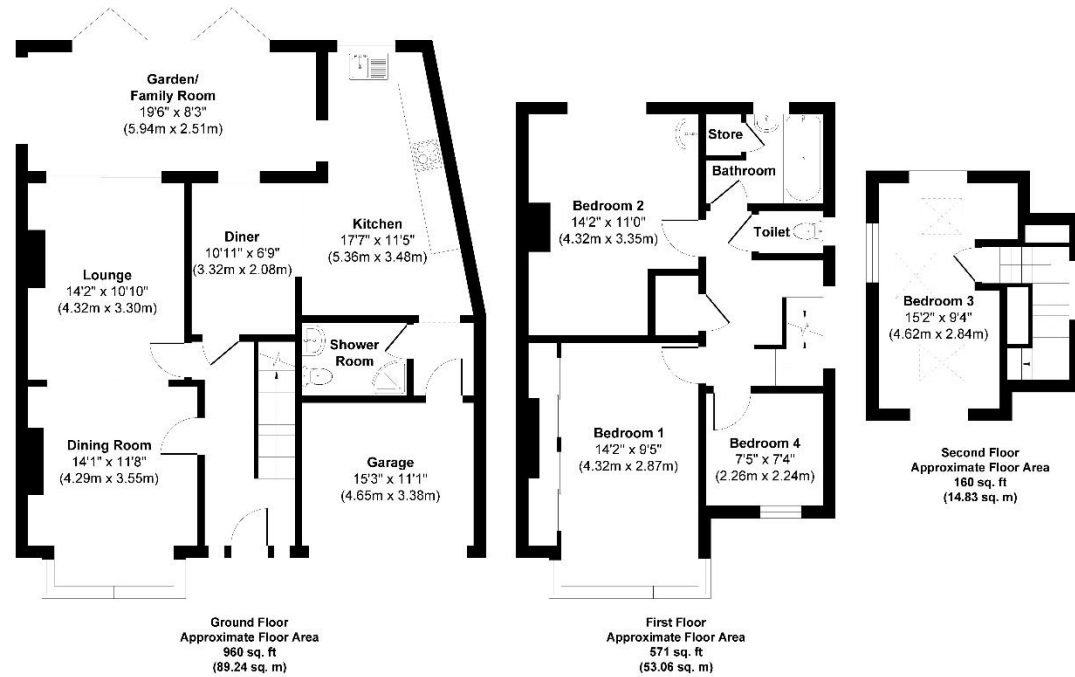
A beautifully presented 4-bedroom detached family home, perfectly designed for modern living and entertaining. The spacious ground floor features a welcoming sitting room, dining room, and a stylish kitchen/breakfast room flowing into a bright, airy family room. Bi-folding doors open onto a large decked terrace and an east-facing, level garden — ideal for summer gatherings and family life. This gorgeous property also offers four well-proportioned bedrooms, a contemporary family bathroom and ground floor shower room. Further benefits include a single garage and driveway. Centrally located within easy walking distance of the train station, schools, and town centre amenities — a rare opportunity in a sought-after setting.



lewis  
white



**Redstone Hill**  
Approx. Gross Internal Floor Area  
1691 sq. ft / 157.13 sq. m



Whilst every attempt has been made to ensure the accuracy of the floorplan shown, all measurements, positioning fixtures fittings and any other data shown are an approximate interpretation for illustrative purposes only and are not to scale. No responsibility is taken for any errors, omission, miss-statement or use of data shown.  
Produced by Home Focus Studio LTD



Council tax band: F EPC: D.

Lewis White Estate Agents, Somers House, Linkfield Corner, RH1 1BB. 01737 245779 info@lewiswhite.net www.lewiswhite.net