



IMMACULATE 4 BEDROOM, 3 BATHROOM DETACHED HOUSE

£800,000

4 Green Lane, Lingfield, Surrey, RH2 7RW

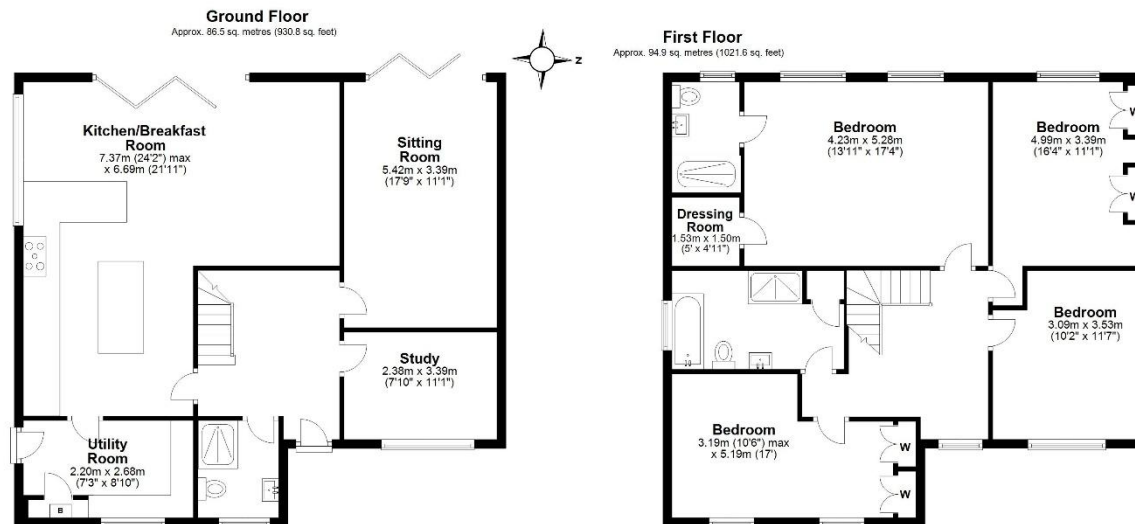
Stunning 4-bedroom, 3-bathroom detached home tucked away on a private road in central Lingfield. Boasting a stunning open-plan kitchen/dining/family room with bi-fold doors leading to a beautifully landscaped west-facing garden. The reception hall, with its elegant tiled flooring, flows into two further reception rooms and a convenient ground-floor shower room. Upstairs, the luxurious main bedroom features an en-suite shower room and dressing area, accompanied by three additional spacious bedrooms and a large family bathroom. Outside, the sunny south-west facing garden offers a level lawn and generous patio, perfect for entertaining. The front includes an EV charging point and driveway parking for two cars. Council Tax Band E. EPC: C.



lewis
white



Council tax band: E. EPC: C.



Total area: approx. 181.4 sq. metres (1952.5 sq. feet)

Produced by Lewis White, not to scale and indicative only
Plan produced using PlanUp.