



SPACIOUS SEMI-DETACHED HOME WITH 4 DOUBLE BEDROOMS & 2 BATHROOMS IN CENTRAL REIGATE. £1,073,000

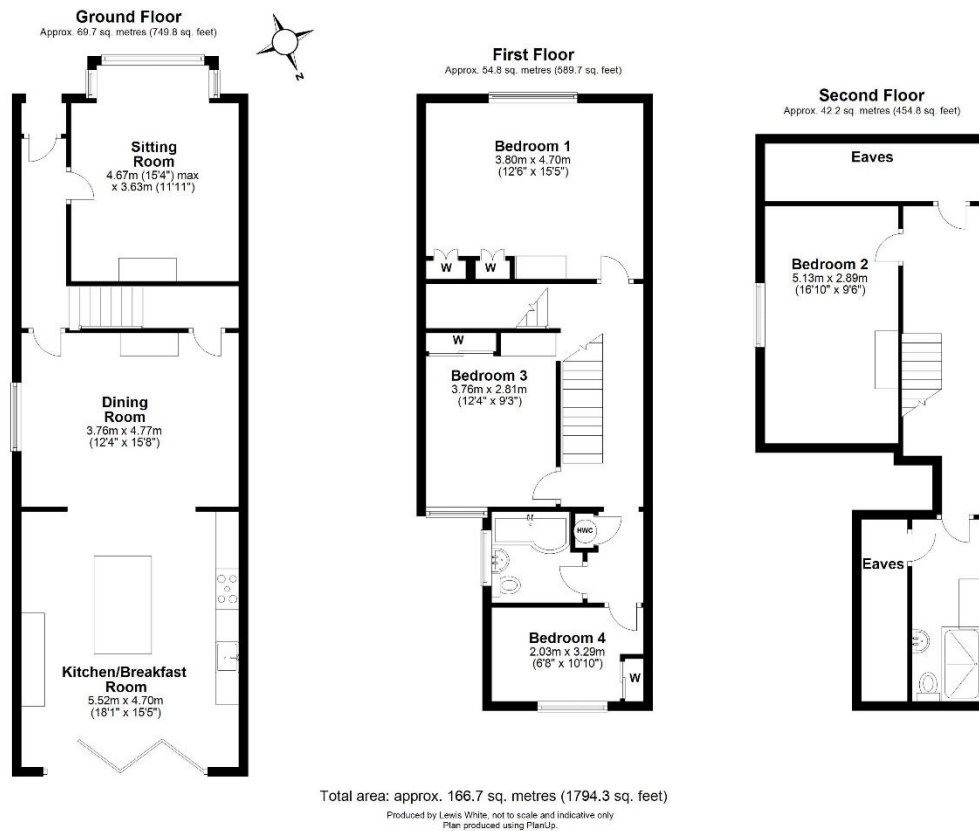
11 Deerings Road, Reigate, Surrey, RH2 0PW

Step into this stunning 4-bedroom, 2-bathroom Victorian semi, beautifully extended to blend timeless charm with modern living. Located in the heart of central Reigate, the home features two elegant reception rooms, one complete with a cozy log-burning stove, perfect for relaxing evenings.

The spacious, light-filled kitchen flows effortlessly through bi-folding doors to a private garden, ideal for entertaining. Off-road parking adds convenience to this prime location, just moments from Reigate's vibrant shops, restaurants, and excellent schools. Period elegance meets contemporary comfort in this rare gem.



lewis
white



Council tax band: E EPC: E

Lewis White Estate Agents, Somers House, Linkfield Corner, RH1 1BB. 01737 245779 info@lewiswhite.net www.lewiswhite.net