



**SPACIOUS 4/ 5 BEDROOM  
DETACHED HOME LOCATED IN  
CENTRAL REIGATE. £955,000**

**21 Priory Drive, Reigate, Surrey, RH2 8AF**

Tucked in a quiet cul-de-sac, this four-bedroom detached home is a short walk from Priory Park and Reigate's town centre. Recently redecorated, it offers modern, flexible space ideal for families. The open-plan kitchen and dining room is perfect for everyday living and entertaining. The sitting room, with a study area, provides a cozy spot for relaxing or working. A versatile ground-floor room can serve as a fifth bedroom, family room, or guest space.

Upstairs are four bright, spacious bedrooms and a family bathroom. Outside, a secluded east-facing garden is ideal for dining or play, with a garage and driveway parking.

**CHAIN FREE & SUPER LOCATION.**

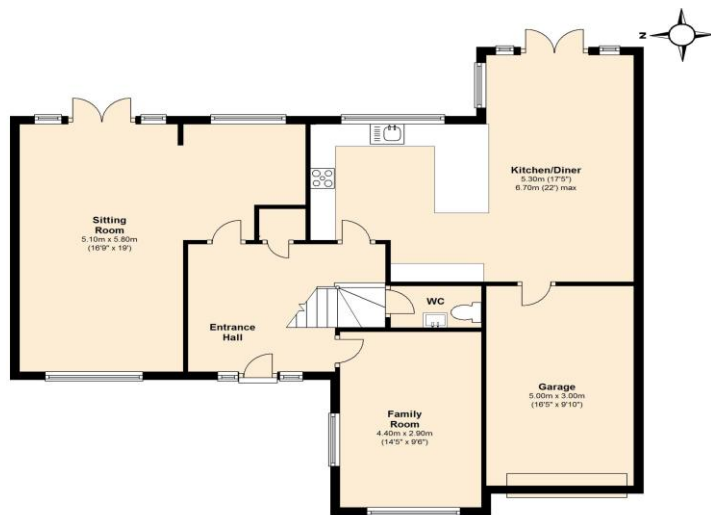


**lewis  
white**



Council tax band: G EPC: D

**Ground Floor**  
Approx. 101.1 sq. metres (1088.0 sq. feet)



**First Floor**  
Approx. 59.0 sq. metres (634.0 sq. feet)



Total area: approx. 154.9 sq. metres (1667.1 sq. feet)  
These drawings are not to scale and are for representational purposes only. Brian Blunden  
Plan produced using The Mobile Agent.