



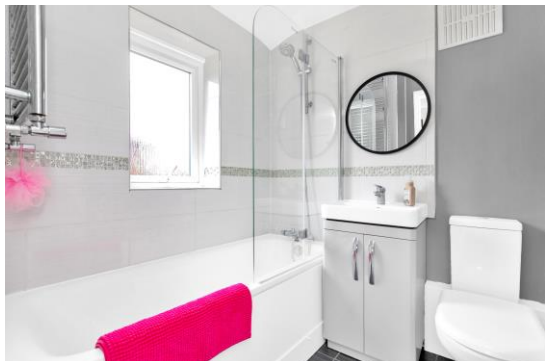
Welcome to this beautifully presented semi-detached house, extended to offer an exquisite blend of family living and entertaining spaces. Upon entering, you're greeted by an inviting sitting room that basks in the morning light from the east. Moving through, you'll find the heart of the home: a stunning open-plan kitchen, dining, and family room. This area is illuminated by natural light from the west-facing bi-folding doors, seamlessly connecting the indoors with the lush garden. Upstairs, the first floor boasts three well-appointed bedrooms and a contemporary family bathroom. The outdoor space features a sun-trap patio, level lawns, and an outbuilding with two rooms and a shower room, perfect for a home office, guest suite, or gym. Off-road parking for two vehicles ensures convenience.

# EXTENDED 3 BEDROOM HOUSE WITH FABULOUS GARDEN

64 Dovers Green Road, Reigate, RH2 8BT  
£625,000



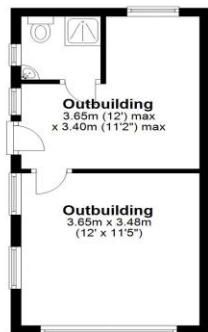
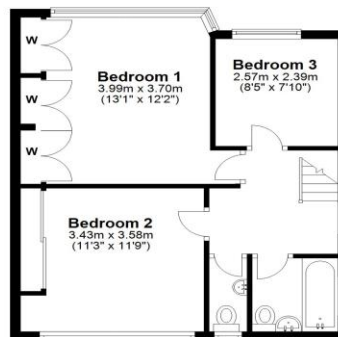
lewis  
white



**Ground Floor**  
Approx. 80.8 sq. metres (869.4 sq. feet)



**First Floor**  
Approx. 45.3 sq. metres (487.4 sq. feet)



Total area: approx. 126.0 sq. metres (1356.8 sq. feet)

Produced by Lewis White, not to scale and indicative only  
Plan produced using PlanUp.



Council tax D, EPC C.