

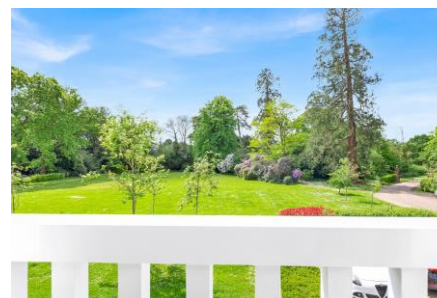


**STUNNING 3 BEDROOM, 2
BATHROOM HOUSE WITHIN A GATED
DEVELOPMENT**

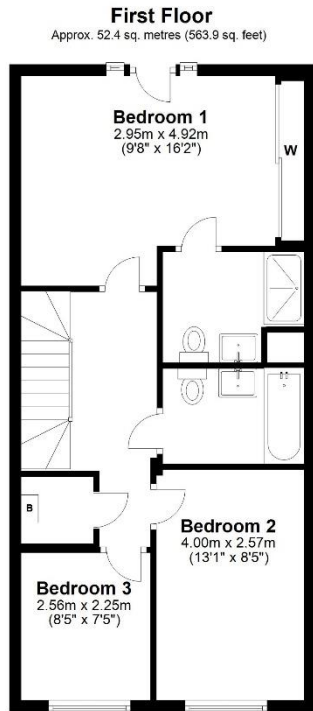
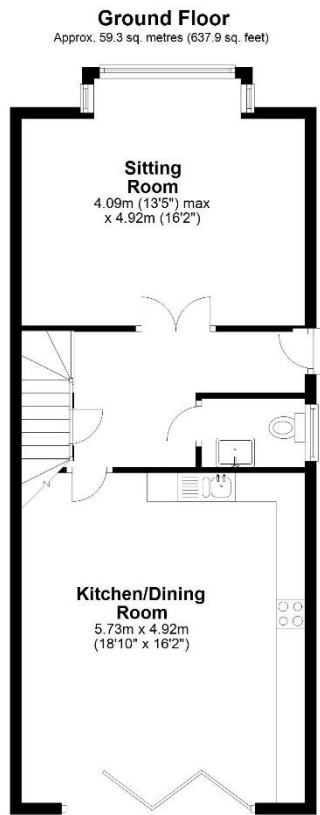
£665,000

8 Sommers Gate, Reigate, Surrey, RH2 8BU

Step into luxury with this stunning 3-bedroom, 2-bathroom house nestled within a prestigious gated development. Enjoy breathtaking views from the sitting room overlooking manicured grounds. The open-plan fitted kitchen/dining room, featuring bi-folding doors, seamlessly merges indoor and outdoor living. A convenient cloakroom with WC adds practicality. Upstairs, the master bedroom boasts a Juliette balcony, en-suite, and fitted wardrobes, while two additional bedrooms offer flexibility. With a high-spec finish throughout, the landscaped rear garden provides a serene retreat. Parking is a breeze with 2 allocated spaces, 1 of which is in the car barn. Energy efficient home with solar panels. EPC rating B. Council tax band F. Communal grounds provide a gorgeous setting for this fabulous home, estate maintenance charge £125 per month.



lewis
white



Total area: approx. 111.6 sq. metres (1201.7 sq. feet)

Produced by Lewis White, not to scale and indicative only
Plan produced using PlanUp.



Council tax band: F EPC: B

Lewis White Estate Agents, Somers House, Linkfield Corner, RH1 1BB. 01737 245779 info@lewiswhite.net www.lewiswhite.net