



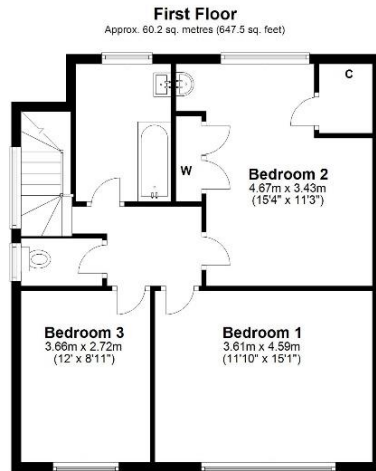
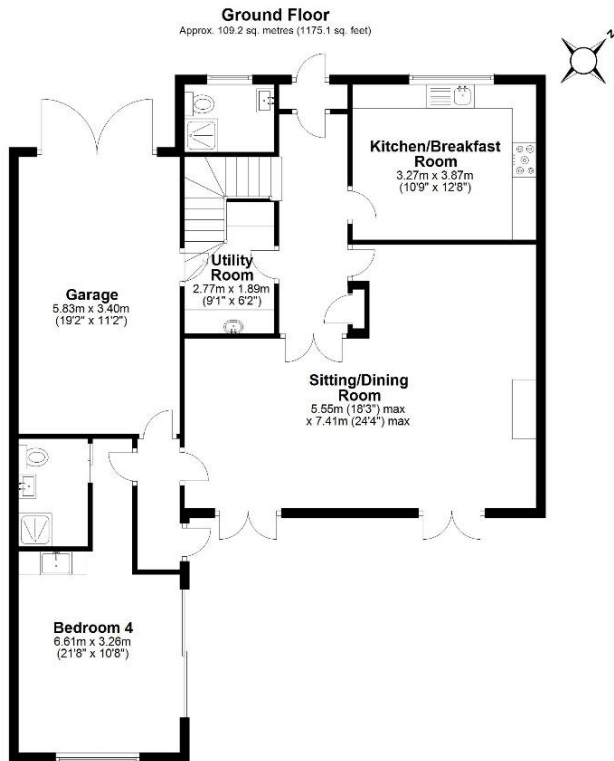
**SPACIOUS SEMI-DETACHED
HOME WITH 4 DOUBLE
BEDROOMS & 3 BATHROOMS IN
CENTRAL REIGATE. £900,000**

132 Croydon Road, Reigate, Surrey, RH2 0NQ

Indulge in luxury living with 4 double bedrooms and 3 bathrooms in the heart of Reigate town centre in a quiet cul-de-sac off Croydon Road. The chic fitted kitchen, utility room, and single garage elevate convenience, while the ground floor en-suite double bedroom caters to guests or multigenerational living. On the first floor there are 3 further double bedrooms and family bathroom. Outside, enchanting gardens surround this stylish retreat. Perfectly positioned for easy access to town amenities, this home seamlessly blends comfort and elegance. Your dream lifestyle awaits!



lewis
white



Total area: approx. 169.3 sq. metres (1822.5 sq. feet)

Produced by Lewis White, not to scale and indicative only
Plan produced using PlanUp.



Council tax band: F EPC: D

Lewis White Estate Agents, Somers House, Linkfield Corner, RH1 1BB. 01737 245779 info@lewiswhite.net www.lewiswhite.net