

2 bedroom apartment in central Reigate close to the train station.

Spacious, first floor 2 bedroom apartment with balcony and single garage located in central Reigate.

Inside you will find 2 double bedrooms, sitting room with balcony, a modern fitted kitchen and updated bathroom with white suite.

Outside there are communal gardens, residents parking and a single garage.

172 year lease.

Peppercorn ground rent.

£1,200 per annum maintenance.



CHAIN FREE

GUIDE PRICE

£299,500

6 Gayton Court, Somers Road, Reigate, Surrey, RH2 9DX



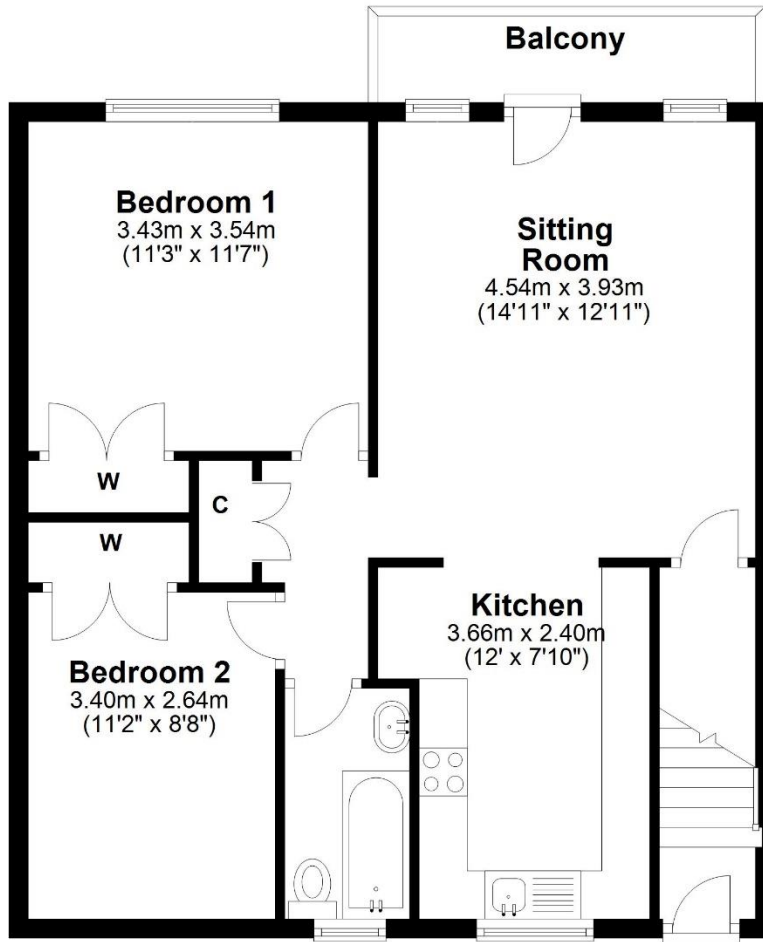
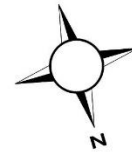
PRS Property Redress Scheme

- 2 double bedrooms.
- Updated bathroom with white suite.
- Sitting room with south facing balcony.
- Fitted kitchen.
- Communal gardens.
- Single garage.

- Walking distance to Reigate train station and town centre.
- Valid EICR
- Long lease and low annual charges.
- CHAIN FREE

First Floor

Approx. 63.2 sq. metres (680.3 sq. feet)



Total area: approx. 63.2 sq. metres (680.3 sq. feet)

Produced by Lewis White, not to scale and indicative only
Plan produced using PlanUp.

Council tax band: E

EPC Rating: E

