



FOUNDATION

01227 752617

[sales@foundationestateagents.co.uk](mailto:sales@foundationestateagents.co.uk)

[www.foundationestateagents.co.uk](http://www.foundationestateagents.co.uk)



6 Bennetts Cottage, Dunn Street, Bredhurst ME7 3ND

2 BEDROOMS | 1 BATHROOM | 1 RECEPTION

Freehold



## 6 Bennetts Cottage, Dunn Street, Bredhurst ME7 3ND

- Enchanting Two Bedroomed Cottage
- Significantly Enhanced & Creatively Renovated
- Artistically Presented With Fine Decor
- Flourishing In Period Features
- Brand New Kitchen & Bathroom
- Bespoke Joinery Including New Sash Windows
- 100 Ff Rear Garden, Studio & Summer House
- Off Road Parking



### SITUATION:

Bredhurst is in a designated Area Of Outstanding Beauty, close to Pilgrims Way, there is a Primary school, local pub, vibrant village hall with community events, a church and an abundance of rural countryside walks, yet within easy access of the M2. The area is further enhanced by a larger selection of shops found at the nearby Hempstead Valley shopping centre which has a Marks and Spencer's and several eateries.

Chatham dockyard is just a few miles away and draws visitors from all over the world, it has now extended to offer an array of bars, restaurants, and outlet shopping alongside the elegant marina.

Rochester, less than five miles away, is a historic town known for Charles Dickens, it has a Cathedral that was founded in AD604 and holds many festivities including the annual Christmas markets. The high street is steeped in history and has an array of quaint

little cafes, independent retailers, and antique shops.

Rochester train station is a modern design incorporating the latest high specification finishes and provides excellent high-speed links into London in less than 40 minutes.

Gillingham is another neighbouring town and has an ice rink, ski centre and the lovely Capstone Park, home to nature and pondlife. The Medway towns have a good selection of primary, secondary, and private schools including Kings school in Rochester which is the second oldest school in the world.

Rail links from Rainham and Gillingham provide excellent connection with the city in under an hour as well as great accessibility to Kents coast.



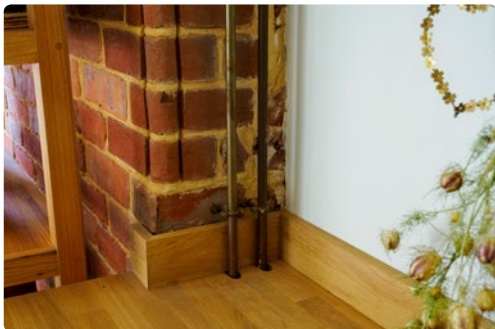


#### DESCRIPTION:

An enchanting two-bedroom farm workers cottage, which presents a remarkable blend of period elegance and modern sophistication. This property has undergone a meticulous renovation, showcasing bespoke carpentry and artistic design that reflects the dedication of its current owners.

Situated in the sought-after village of Bredhurst, the cottage enjoys excellent access to the M2 and is conveniently close to Rainham train station, making it an ideal retreat for commuters heading to London.

As you approach the cottage, you'll be captivated by its quaint exterior, characterized by beautifully maintained exposed brickwork that tells a story of its heritage. Original internal doors add to the character, while sash windows, handcrafted by local joiners and fitted with acoustic glass, not only enhance the home's charm but also provide a peaceful interior.



Upon entering, you are welcomed into a charming sitting room that radiates warmth and comfort from the wood burning stove nestled within the open fireplace. The room is adorned with soft seagrass carpeting, adding a touch of natural texture that complements the overall aesthetic.

Flowing seamlessly from the sitting room is the newly fitted kitchen-breakfast room, a space designed with both functionality and style in mind. An exposed brick wall provides a rustic backdrop, while the elegant, tiled floor, equipped with underfloor heating, ensures warmth throughout the year.

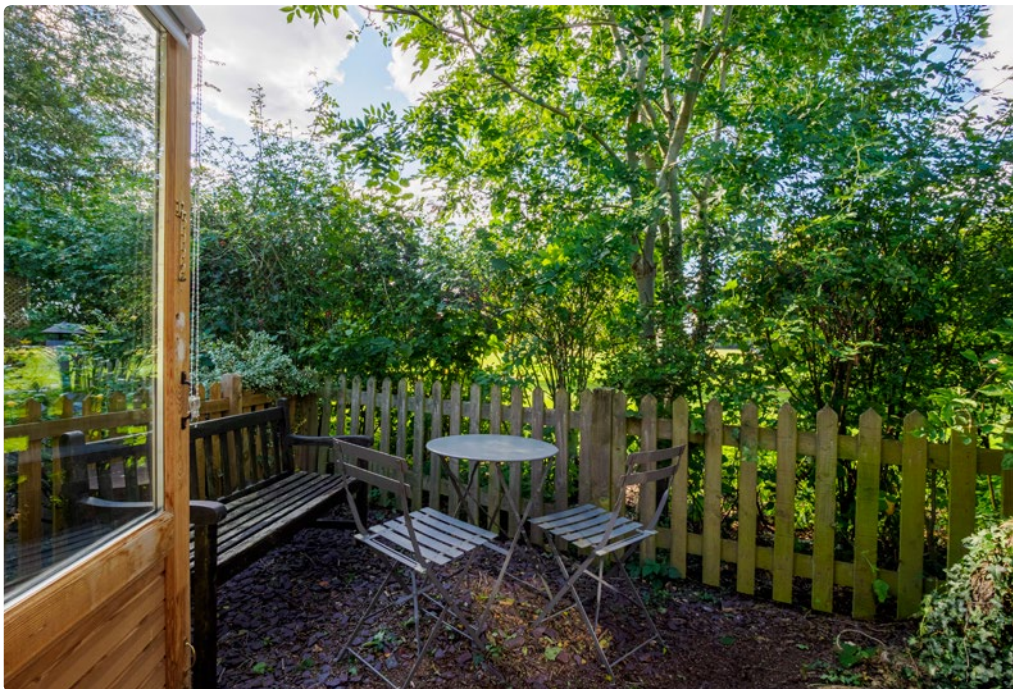
The kitchen boasts shaker-style units with brushed brass handles, oak worktops and integrates a dishwasher whilst the Belfast sink, paired with a stylish brass mixer tap, adds a classic touch to this contemporary space. A Smeg cooker, sits perfectly between the units and is available by negotiation, whilst a bespoke cupboard integrates laundry appliances and is a convenient space for the fridge freezer.

The kitchen is further enhanced by hidden storage and a fully shelved larder. French doors in the kitchen lead you into the garden, whilst a sky window allows natural light to flood through the space and creating a seamless connection to the outdoors.

The ground floor is also home to a brand-new Burlington bathroom, featuring a roll-top bath with Victorian taps and rainfall shower, a washstand and WC, the space is finished with tasteful panelling and a black ladder towel radiator.

Ascending the painted staircase, you will discover two generously sized double bedrooms, each thoughtfully designed to provide romance and comfort.

The main bedroom features bespoke fitted wardrobes, offering ample storage without compromising on space. An ornate cast iron fireplace serves as a charming focal point, while a column radiator beneath the sash windows.



#### OUTSIDE:

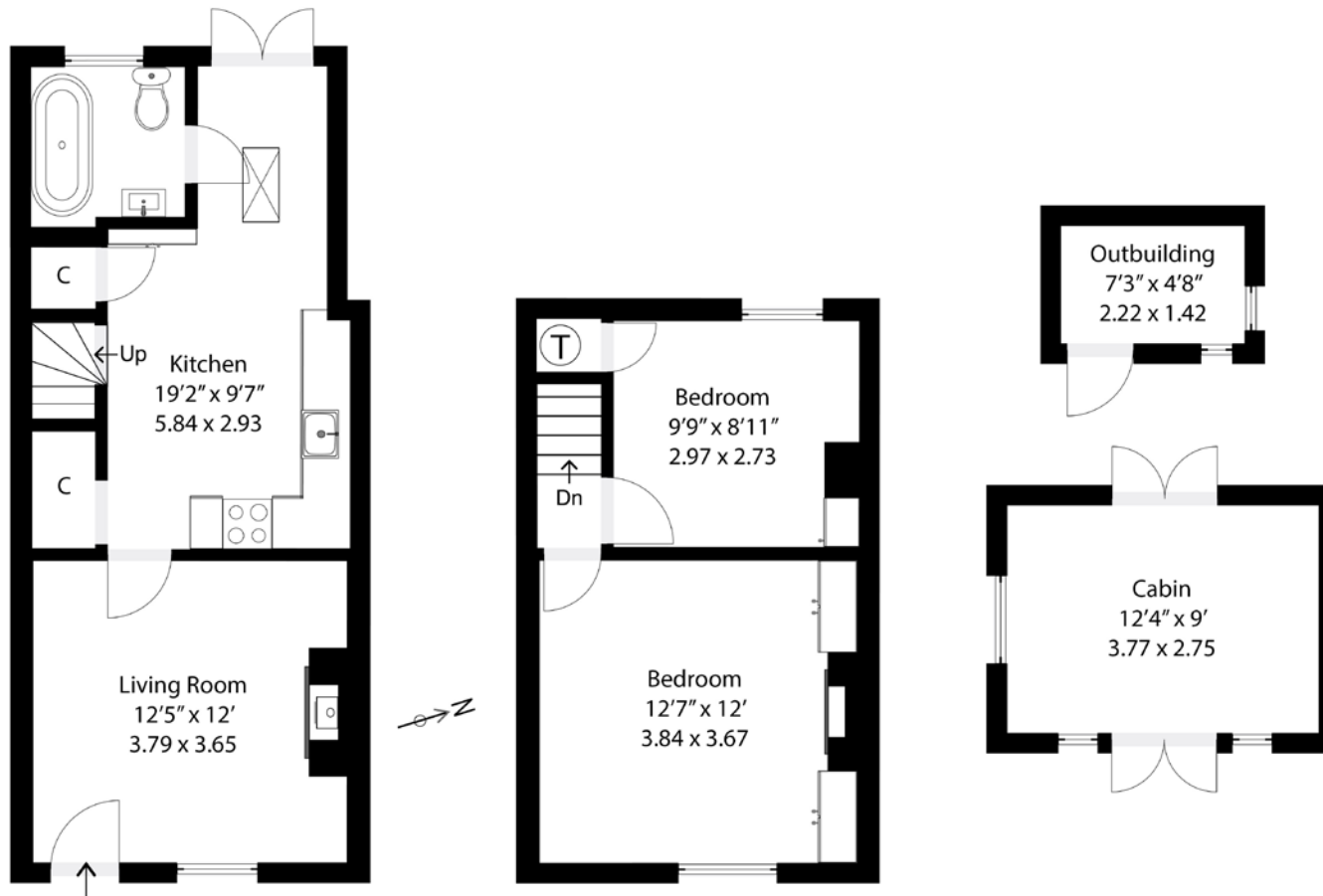
Number Six Bennetts Cottage occupies a generous plot with the garden extending over 100 feet, it is beautifully landscaped and divided into distinct areas, each offering a unique atmosphere for relaxation and entertainment. The sun terrace is accessed via the French doors, and is a peaceful and private haven to enjoy a morning coffee.

Beyond the terrace, the garden is predominantly laid to lawn, bordered by vibrant flowerbeds and established shrubs. At the far end of the garden, you'll discover two insulated garden studios, perfect for those seeking a dedicated workspace or a creative retreat. Behind the main summer studio lies a secret garden, a hidden gem that overlooks a small paddock.

#### SUMMARY:

The current owners have invested considerable love and care into this renovation, ensuring that no detail has been overlooked. From the replacement of windows and external doors to the updating of electrics and installation of a new heating system, this home combines aesthetic beauty with practical functionality.

In summary, this enchanting cottage is not just a residence; it's a thoughtfully crafted sanctuary that embodies the perfect fusion of historical charm and contemporary living. With its captivating design, beautiful surroundings, and prime location in Bredhurst, this property offers a unique opportunity to embrace a lifestyle of comfort and tranquility.



TOTAL FLOOR AREA: 806 sq. ft (75 sq. m)  
 COTTAGE: 660 sq. ft (61 sq. m)  
 OUTBUILDINGS: 146 sq. ft (14 sq. m)



EPC RATING  
 E



COUNCIL TAX BAND  
 C



GENERAL INFORMATION  
 Electric fuel only

Suite 1, 2nd Floor, 3 Jubilee Way, Faversham, Kent ME13 8GD

01227 752617 | sales@foundationestateagents.co.uk | www.foundationestateagents.co.uk

We endeavour to make our sales particulars accurate and reliable, however, they do not constitute or form part of an offer or any contract and none is to be relied upon as statements of representation or fact. Any services, systems and appliances listed in this specification have not been tested by us and no guarantee as to their operating ability or efficiency is given. All measurements, floor plans and site plans are a guide to prospective buyers only, and are not precise. Fixtures and fittings shown in any photographs are not necessarily included in the sale and need to be agreed with the seller. Foundation Estate Agents is a trading name of Foundation Property Services (Kent) Limited. Registered in England and Wales No. 7139236. Registered Address: Suite 1, 2nd Floor, 3 Jubilee Way, Faversham, Kent ME13 8GD.

