



FOUNDATION

01227 752617

[sales@foundationestateagents.co.uk](mailto:sales@foundationestateagents.co.uk)

[www.foundationestateagents.co.uk](http://www.foundationestateagents.co.uk)



4 Brunswick Cottages, Conyer, ME9 9HF

3 BEDROOMS | 1 BATHROOM | 3 RECEPTIONS

Freehold



## 4 Brunswick Cottages, Conyer ME9 9HF

- Characterful Spacious Cottage
- Three Reception Rooms
- Wood Burning Stove
- Open Plan Living Areas
- Artistically Presneted Throughout
- Private Garden With Studio
- In The Heart Of Creekside Conyer
- Just A Few Miles From Faversham

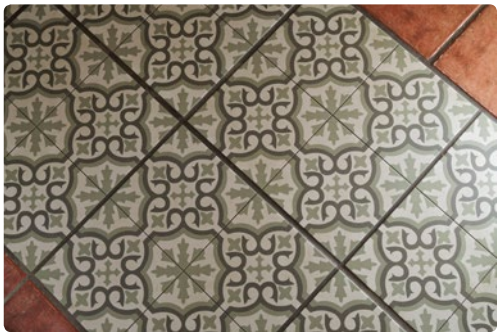
### SITUATION:

Conyer is a picturesque Creekside hamlet five miles from the medieval market town of Faversham. Situated on the Swale, it offers two marinas (both with mooring options and one with a cruising club and clubhouse facilities) and the welcoming Creekside Ship Inn, a superbly renovated village pub and eatery serving classic traditional fare.

Surrounded by farmland and orchards, Conyer is popular with ramblers following the historic Saxon Shore Way, sailors, photographers and bird watchers. It is approx. 20 minute walk to Teynham Village with its handy convenience stores, post office, primary school and railway station (with a service to London). Rail travellers are also well served by mainline stations at Faversham (for Kent's coastal resorts) and Sittingbourne (regular commuter services to London's Victoria and a fast service to St. Pancras International).

Faversham has a wide choice of supermarkets, restaurants, individual shops and leisure facilities. There are three markets a week in the cobbled town square beside the ancient Guildhall. Community attractions include the famous annual Hop Festival (the town holds the oldest brewery in the country) and a magnificent weekend-long classic car show. On the outskirts of the town, Brogdale 'The Home of the National Fruit Collection' stages regular events celebrating Kent as the fruit producing Garden of England.

Both Faversham and Sittingbourne boast high-achieving grammar schools. The cathedral city of Canterbury; Margate, home of its Turner Gallery; and trendy Whitstable, renowned for its oysters and interesting mix of shops, are short journeys away. Thanks to Eurostar, the 'Shuttle' and cross-Channel ferries, the Continent is virtually on your doorstep.



DESCRIPTION:

A delightful, quirky cottage situated in the heart of Conyer, a Creekside hamlet which neighbours the village of Teynham and just a few miles from the market town of Faversham.

Brunswick Cottages dates back to the late 1800's and was once two cottages which was knocked into one later in the 20th century. There is now over 1000 sq.ft of characterful space which has been further enhanced by the current owner who has embraced its period features with their own creative interior design.

The front door opens into a particularly large sitting room with a lovely terracotta style tiled floor and an exposed brick chimney breast with wood burning stove.



OUTSIDE:

To the rear of the cottage there is a wide, open plan kitchen breakfast room which is open to the double-glazed conservatory.

The kitchen has been fitted with a good range of contemporary units set around solid wood work surfaces and a breakfast bar.

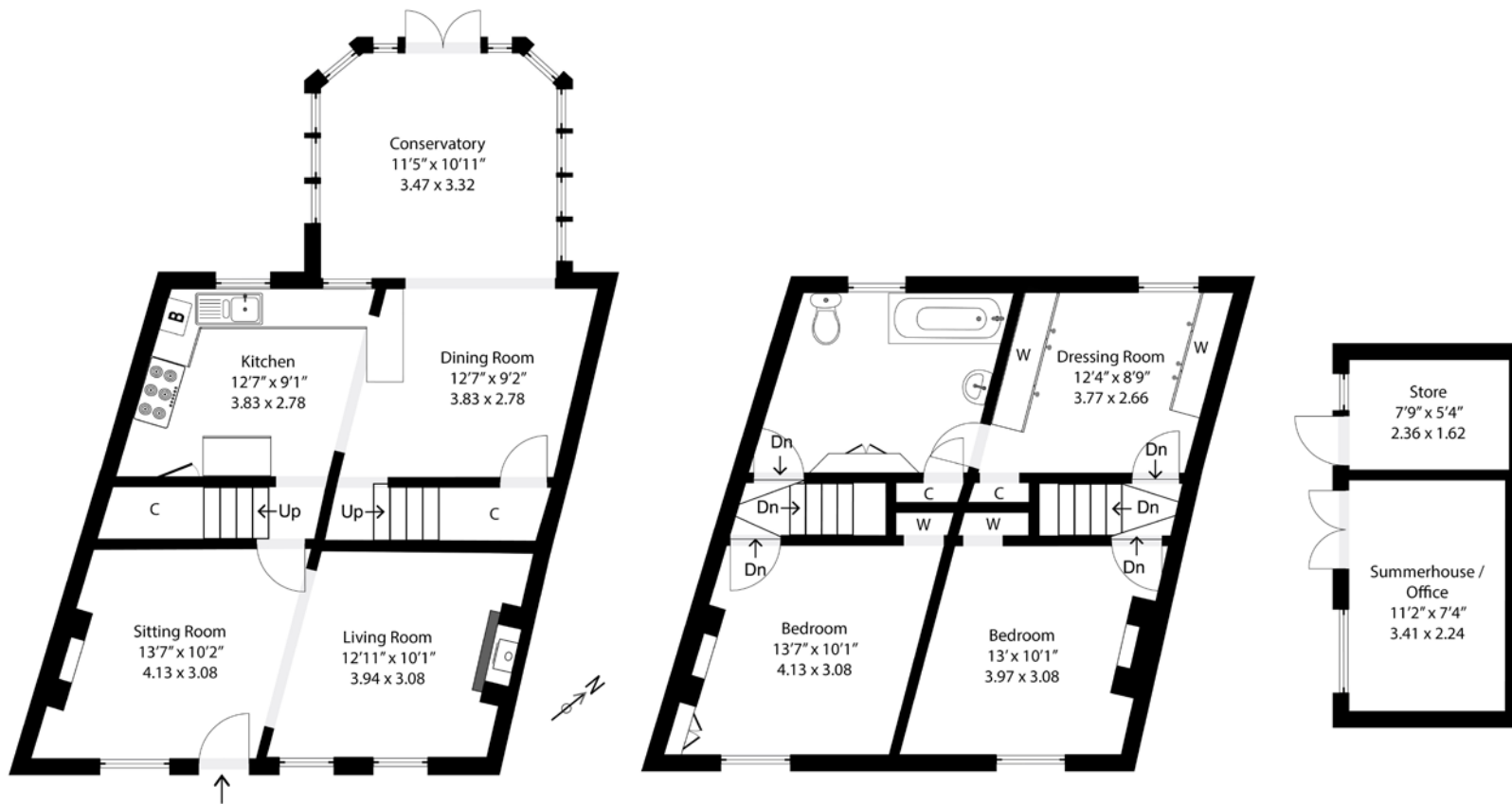
The conservatory has low level brick walls and double-glazed French doors which open onto the garden.

Two separate flights of stairs lead to the first floor, where one will find three generously proportioned double bedrooms and the main family bathroom. This was formerly a bedroom and consequently is a wonderful size for a bathroom. It is fully tiled and has been fitted with a contemporary white suite including a shower over the bath.

The garden is an enchanting space which has an abundance of established shrubs, the pathway leads to a art studio/office which has exposed brick walls and a pitched ceiling with window over looking the garden.







TOTAL FLOOR AREA: 1219 sq. ft (113 sq. m)  
 HOUSE: 1091 sq. ft (101 sq. m)  
 OFFICE: 128 sq. ft (12 sq. m)



EPC RATING  
 D



COUNCIL TAX BAND  
 C



GENERAL INFORMATION  
 LPG gas & mains drainage

Suite 1, 2nd Floor, 3 Jubilee Way, Faversham, Kent ME13 8GD

01227 752617 | sales@foundationestateagents.co.uk | www.foundationestateagents.co.uk

We endeavour to make our sales particulars accurate and reliable, however, they do not constitute or form part of an offer or any contract and none is to be relied upon as statements of representation or fact. Any services, systems and appliances listed in this specification have not been tested by us and no guarantee as to their operating ability or efficiency is given. All measurements, floor plans and site plans are a guide to prospective buyers only, and are not precise. Fixtures and fittings shown in any photographs are not necessarily included in the sale and need to be agreed with the seller. Foundation Estate Agents is a trading name of Foundation Property Services (Kent) Limited. Registered in England and Wales No. 7139236. Registered Address: Suite 1, 2nd Floor, 3 Jubilee Way, Faversham, Kent ME13 8GD.

