



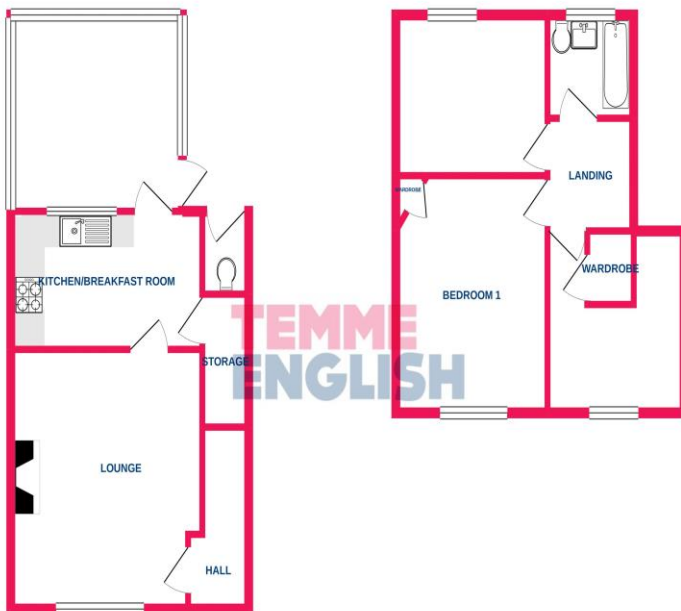
Offered TO LET is this three-bedroom terrace property situated in the heart of Chelmsford. This home offers entrance hall, lounge, kitchen/breakfast room with cooker, conservatory, large garden, modern bathroom, double glazing, brand new combi boiler, off road parking via driveway. Available early Jan 2021!!

Price Monthly Rental Of £1,150



GROUND FLOOR
457 sq.ft. (42.5 sq.m.) approx.

1ST FLOOR
375 sq.ft. (34.9 sq.m.) approx.



TOTAL FLOOR AREA: 833 sq.ft. (77.4 sq.m.) approx.
While every attempt has been made to ensure the accuracy of the floorplan contained herein, measurements of floors, windows, doors and any other items are approximate and no responsibility is taken for any error, omission or mis-statement. This plan is for illustrative purposes only and should be used as such by any prospective purchaser. The services, systems and appliances shown have not been tested and no guarantee as to their operability or efficiency can be given.
 Made with Mapbox 12/2020

- **AVAILABLE JANUARY 2021!!**
- **Entrance Hall 6'7 x 2'6**
- **Lounge 14'0 x 12'9**
- **Kitchen/Breakfast Room 12'9 x 7'6**
- **Conservatory 10'8 x 9'10**
- **Bedroom One 12'9 x 10'3**
- **Bedroom Two 10'0 x 8'9**
- **Bedroom Three 10'3 x 9'3 > 6'4**
- **Family Bathroom 5'7 x 5'7**
- **Large Rear Garden + Off Street Parking.**

