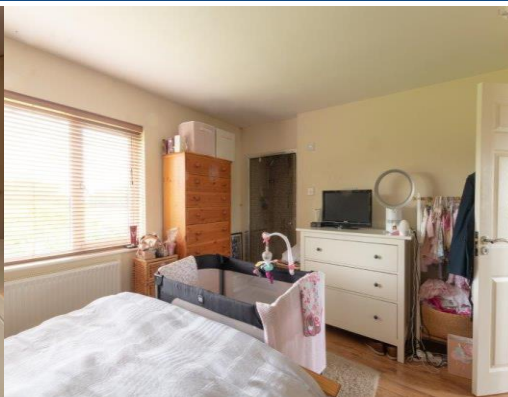




Offered TO LET is this three bedroom semi detached property available Mid July. This home offers porch, L-shaped lounge-diner, large kitchen, family bathroom, large rear garden, off street parking, garage and is within walking distance of local schools.

Price Monthly Rental Of £1,195



Whilst every attempt has been made to ensure the accuracy of the floor plan contained here, measurements of doors, windows, rooms and any other items are approximate and no responsibility is taken for any error, omission, or mis-statement. This plan is for illustrative purposes only and should be used as such by any prospective purchaser. The services, systems and appliances shown have not been tested and no guarantee as to their operability or efficiency can be given.
Made with Mapson 10019

- Available Mid July!!
- Porch 6'4 x 4'5
- L-Shaped Lounge-Diner 20'8 x 16'8>13'3
- Kitchen 14'4 x 9'0
- Fitted Cooker & Dishwasher To Remain
- Bedroom One 13'5 x 11'0 Incorporating a Shower Cubicle
- Bedroom Two 9'7 x 8'9
- Bedroom Three 9'0 x 8'2
- Family Bathroom 9'0 x 8'2
- Large Rear Garden
- Off Street Parking & Garage
- Close To Local Schools.

