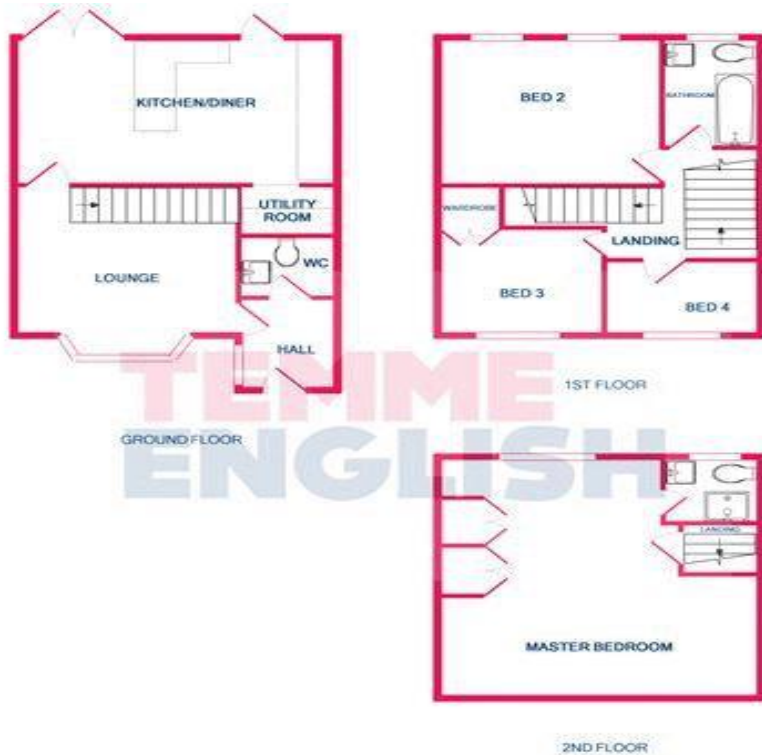




Offered To Let is this attractive and recently refurbished FOUR bedroom terrace home situated in the ever so popular village of Writtle. This home has undergone many improvement to enhance the living space and the accommodation throughout. Within in this property you enjoy a lounge, cloakroom, large kitchen/diner which has just been replaced, Master bedroom with En-suite, three further bedrooms and family bathroom. To add to this also the garden has just been landscaped. Being in Cul-de-Sac there is plenty of parking off street too. Within a very short walk is the local infant and Junior school, plus Hylands Senior schools is within 15/20 minutes walk.

**Price Monthly Rental Of £1,400**



Whilst every attempt has been made to ensure the accuracy of the floor plan contained here, measurements of doors, windows, rooms and any other items are approximate and no responsibility is taken for any error, omission, or mis-statement. This plan is for illustrative purposes only and should be used as such by any prospective purchaser. The services, systems and appliances shown have not been tested and no guarantee as to their operability or efficiency can be given.  
Made with Metropix CQ018

- **FOUR Bedroom Refurbished Terrace Home!!**
- **Available Soon!!**
- **Close To All Local Schools**
- **Lounge (14'2 x 12'11)**
- **Modern Kitchen/Dining Room (17'11 x 10'10)**
- **Utility Room + Cloakroom**
- **Master Bedroom with En-Suite Shower Room (17'5 x 14'1)**
- **Bedroom Two (12'2 x 10'10)**
- **Bedroom Three (10'0 x 9'3)**
- **Bedroom Four (8'6 x 7'9)**
- **Family Bathroom**
- **Upvc Double Glazing & Gas Central Heating**
- **Close To Local Shops**

