

Inglis Way, Mill Hill, NW7 1FJ  
Offers In Excess Of £830,000 Leasehold Council Tax Band G

**REAL ESTATES**  
Est. 1981

Estate Agents · Residential Sales · Investments · Lettings



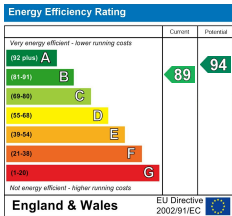
CHAIN FREE- Real Estates are delighted to offer for sale this well presented four-bedroom townhouse, arranged over four floors and set within the highly sought-after Millbrook Park development in Mill Hill East.

Immaculately presented and thoughtfully designed, this home offers stylish, spacious living space. The ground floor features two generous reception rooms, a versatile space currently used as a dining room or home office, and a large formal lounge opening onto a full-width south-facing balcony overlooking the garden. A guest W/C and storage cupboard complete this level.

On the lower-ground floor, a open-plan kitchen with large island and breakfast bar opens directly onto a 45ft south-facing garden with premium artificial lawn. This level also includes a separate utility room, additional W/C, pantry, storage cupboards, and a restaurant-grade dumbwaiter lift connecting the kitchen to the dining area above. The first floor offers two large double bedrooms, each with its own en-suite. The larger bedroom includes bespoke wardrobes and a built-in desk. The entire top floor is dedicated to a luxurious master suite, complete with a dressing area, spacious en-suite with bath and shower, and an additional fourth bedroom perfect as a nursery, office, or guest room.

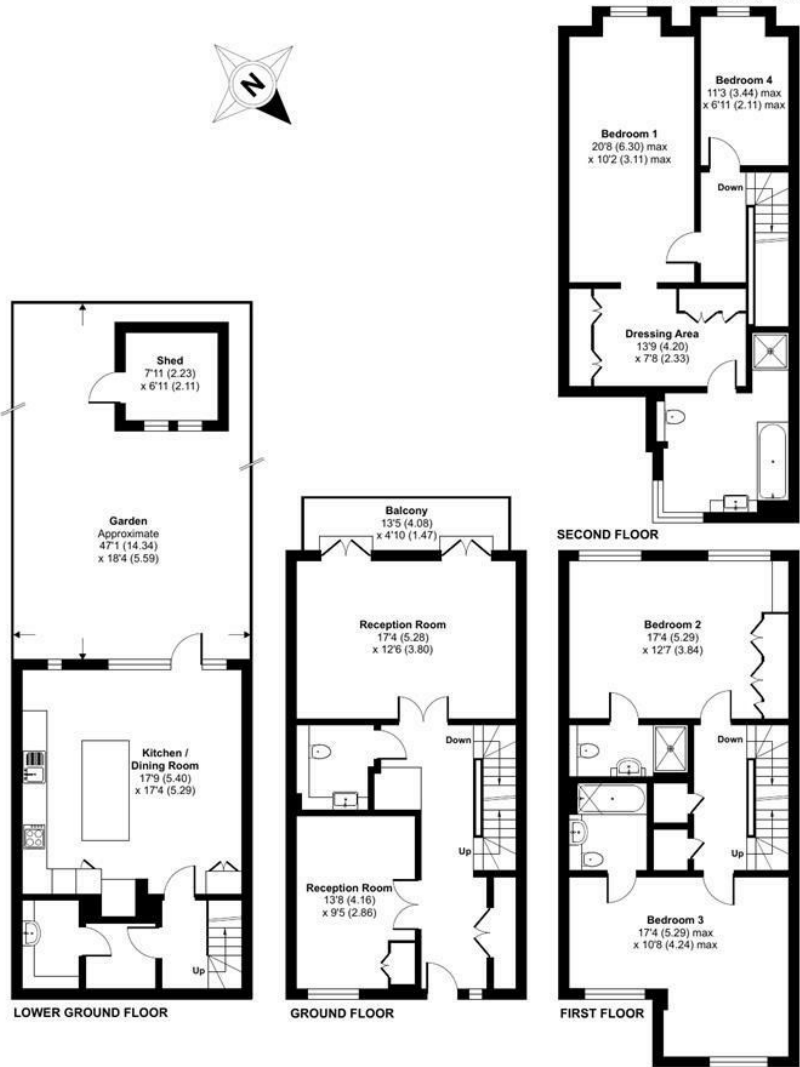
Additional features include underfloor heating, air conditioning, secure underground parking for two cars, and high-quality finishes throughout.

Just moments from Mill Hill East station, excellent schools, and local amenities, this is an exceptional opportunity to acquire a turnkey family home in a thriving and well-connected community. Viewings are highly recommended. Sole Agent.



Inglis Way, London, NW7

Approximate Area = 2260 sq ft / 209.9 sq m  
Outbuilding = 51 sq ft / 4.7 sq m  
Total = 2311 sq ft / 214.6 sq m  
For identification only - Not to scale



Floor plan produced in accordance with RICS Property Measurement 2nd Edition, Incorporating International Property Measurement Standards (IPMS2 Residential). © richcom 2025. Produced for Real Estates. REF: 1357526