



The Maples, Goffs Oak, EN7 6ST
Asking Price £1,650,000 Freehold Council Tax Band H

REAL ESTATES
Est.1981

Estate Agents · Residential Sales · Investments · Lettings

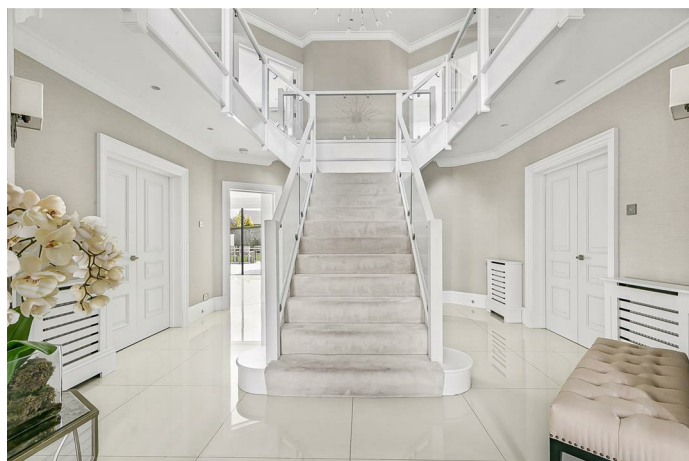
CHAIN FREE- Real Estates are delighted to offer for sale this stunning 5-bedroom detached family residence offering approx 4,000 sq ft of spacious, well-planned accommodation, recently refurbished to the highest standards.

This outstanding property features a bespoke kitchen with central island, granite work surfaces and top-of-the-line Neff appliances. The luxury bathrooms are fitted with premium sanitaryware from Laufen and Duravit.

Set in a secure, private gated cul-de-sac, this home is accessed through its own gated entrance and includes generous parking for multiple vehicles. The established rear garden boasts a decked area, play zone and small football pitch.

Located in the exclusive St James area of Goffs Oak, just a short distance from the village, local amenities, and Cuffley station with direct rail links to London.

Please contact our Totteridge office for further information or to arrange a viewing.





Energy Efficiency Rating		Current	Potential
Very energy efficient - lower running costs			
A	92-100		
B	81-91		
C	69-80		
D	55-68		
E	39-54		
F	21-38		
G	1-20		
Not energy efficient - higher running costs			
EU Directive			

Approximate Gross Internal Area 4000 sq ft - 371 sq m

Ground Floor Area 2222 sq ft - 206 sq m

First Floor Area 1778 sq ft - 165 sq m

