



Holden Road, Woodside Park, N12 7AG
£625,000 Leasehold Council Tax Band F

REAL ESTATES
Est.1981

Estate Agents · Residential Sales · Investments · Lettings

Real Estates are delighted to offer for sale this beautifully presented 2 BEDROOM, 2 BATHROOM RAISED GROUND FLOOR apartment with the benefit of a spacious PRIVATE TERRACE, in a new development of just 34 exquisitely finished apartments built approx 4 years ago.

Benefitting from SECURE UNDERGROUND PARKING, excellent transport links, great local amenities and green spaces, The Westbury offers the very best of urban and rural living.

The apartment is exceptionally well fitted with high specification designer kitchens (included integrated appliances and hot tap) and bathrooms, fitted cupboards to both bedrooms and entrance hall, underfloor heating throughout, and are pre-wired for modern entertainment systems.

Situated within a stone's throw to WOODSIDE PARK NORTHERN LINE tube station, various bus routes and green walks as well as being within walking distance of local coffee shops and a convenience store.

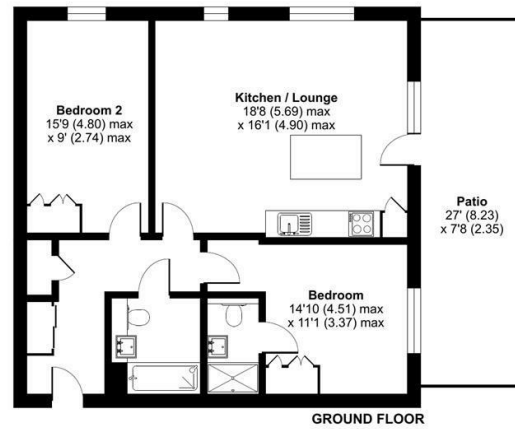
Please contact our Totteridge office for further information or to arrange a viewing.





Holden Road, London, N12

Approximate Area = 775 sq ft / 72 sq m
For identification only - Not to scale



Floor plan produced in accordance with RICS Property Measurement 2nd Edition,
Incorporating International Property Measurement Standards (IPMS2 Residential). © richcom 2025.
Produced for Real Estates. REF: 1249023

Energy Efficiency Rating		Current	Potential
Very energy efficient - lower running costs			
A	(91-100)	83	83
B	(81-90)		
C	(71-80)		
D	(61-70)		
E	(51-60)		
F	(41-50)		
G	(31-40)		
Not energy efficient - higher running costs			
EU Directive			



Real EstatesTotteridge Office:
32 Totteridge Lane
Totteridge N20 9QJ

ll : 0208 445 3132
e : info@realestates-wsp.co.uk
w : www.realestates-wsp.co.uk