



Buckingham Avenue, Whetstone, N20 9BT  
£389,950 Leasehold Council Tax Band C

**REAL ESTATES**  
Est.1981

Estate Agents · Residential Sales · Investments · Lettings

Real Estates are delighted to offer for sale this this bright 2 bedroom ground floor maisonette within a stone's throw of Whetstone High Road's shops, boutiques, cafes as well as M&S Foodhall and Waitrose. Totteridge & Whetstone Tube Station (Northern Line) and Oakleigh Park Railway Station are just a few minutes walk.

The property comprises a spacious reception room, 2 double bedrooms, bathroom and kitchen leading to back yard with shed,. Garden to front is also included. Lease of 111 years.

Early viewing recommended via the sellers sole agent. Chain Free.





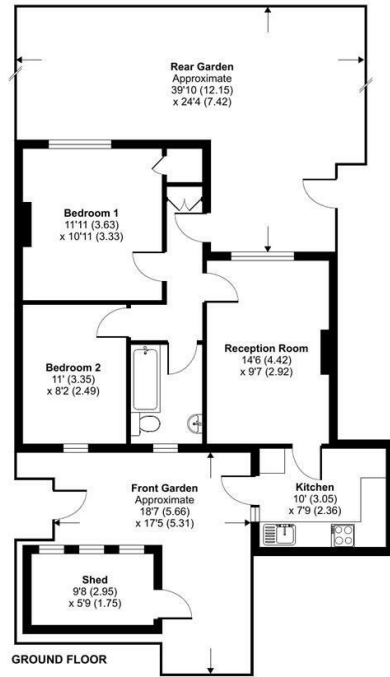
# Buckingham Avenue, London, N20

Approximate Area = 555 sq ft / 51.6 sq m

Shed = 54 sq ft / 5.0 sq m

Total = 609 sq ft / 56.6 sq m

For identification only - Not to scale



Floor plan produced in accordance with RICS Property Measurement Standards incorporating International Property Measurement Standards (IPMS Residential). © ritchcom 2023. Produced for Real Estates. REF: 1188390

Energy Efficiency Rating		Current	Potential
Very energy efficient - lower running costs	A		
Energy efficient - lower running costs	B		
Decent energy efficiency - lower running costs	C		
Some energy efficiency - lower running costs	D		
Low energy efficiency - higher running costs	E		
Very low energy efficiency - higher running costs	F		
Least energy efficient - higher running costs	G		
		62	77

EU Directive



**Real Estates**Totteridge Office:  
32 Totteridge Lane  
Totteridge N20 9QJ

ll : 0208 445 3132  
e : info@realestates-wsp.co.uk  
w : www.realestates-wsp.co.uk