



Oakleigh Avenue, Whetstone, N20 9JJ

Asking Price £4,500,000 Freehold Council Tax Band H

**REAL ESTATES**  
Est.1981

Estate Agents · Residential Sales · Investments · Lettings



Real Estates are delighted to offer for sale this stunning, modern detached residence measuring approx 5500 sq ft, to include 6 bedrooms and 6 bathrooms, as well as a beautifully landscaped garden with spacious patio perfect for outdoor entertaining, an annexe ideal for guests or a home office, off-street parking, garage, and a luxurious lap pool for relaxation and leisure.

The interior of the house is elegantly designed with high-end finishes and contemporary fixtures throughout. The spacious bedrooms offer ample natural light and storage space, whilst the living areas are ideal for hosting.

Situated in leafy Oakleigh Park, close to local amenities, schools, and transport links, this property offers the perfect blend of comfort, convenience, and luxury living. Don't miss the opportunity to make this exceptional property your new home.

\* 6 Bedrooms \* 6 Bathrooms \* 3 Reception Rooms \* Cinema Room \* Luxury Kitchen \* Reception Hall with Feature Staircase \* Landscaped Gardens \* Gated Entrance \* Heated Swimming Pool \*



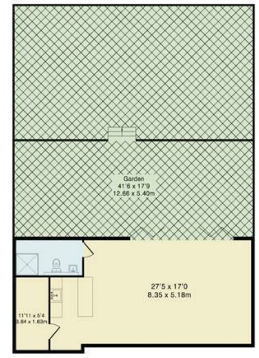




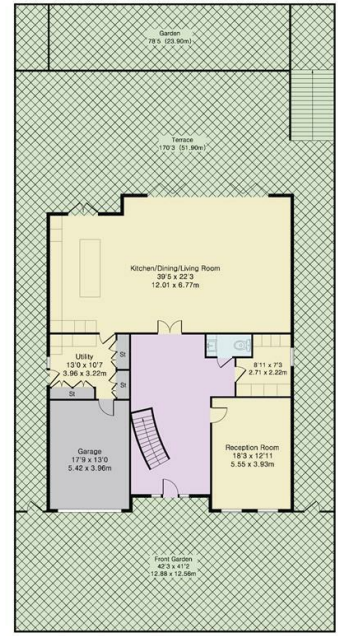


Energy Efficiency Rating		Current	Potential
Very energy efficient - lower running costs			
A	92-100		
B	81-91	82	85
C	69-80		
D	55-68		
E	39-54		
F	21-38		
G	1-20		
Not energy efficient - higher running costs			
EU Directive			

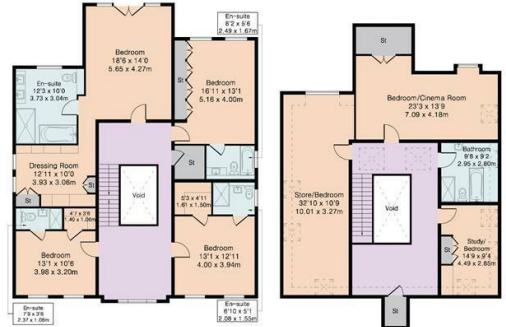
Approximate Gross Internal Area 5595 sq ft – 520 sq m  
 Lower Ground Floor Area 665 sq ft – 62 sq m  
 Ground Floor Area 1943 sq ft – 181 sq m  
 First Floor Area 1663 sq ft – 154 sq m  
 Second Floor Area 1324 sq ft – 123 sq m



Lower Ground Floor



Ground Floor



First Floor

Second Floor

