



St. James Close, Whetstone, N20 0NS
£799,995 Freehold Council Tax Band F

REAL ESTATES
Est.1981

Estate Agents · Residential Sales · Investments · Lettings

Real Estates are delighted to offer for sale this spacious 4 BEDROOM, 2 RECEPTION ROOM semi-detached family home situated in a quiet cul-de-sac, convenient for transport facilities and local schools

Although in need of modernisation, this property boasts approx 1741 sq ft of living space, together with off street parking for several cars and a mature 70 ft rear garden.

Potential to further extend if required (STPP).

Please contact our Totteridge office for further information or to arrange a viewing.





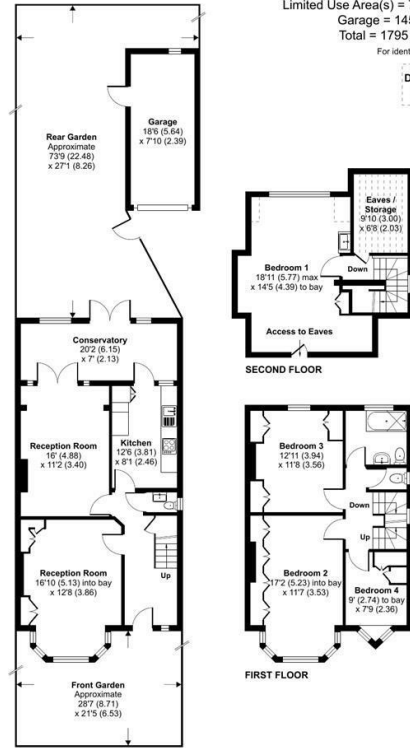


St. James Close, London, N20

Approximate Area = 1572 sq ft / 146 sq m
Limited Use Area(s) = 78 sq ft / 7.2 sq m
Garage = 145 sq ft / 13.4 sq m
Total = 1795 sq ft / 166.6 sq m

For identification only - Not to scale

Denotes restricted head height



Floor plan produced in accordance with RICS Property Measurement Standards incorporating International Property Measurement Standards (IPMS Residential). © rinchcom 2024. Produced for Real Estates - REF: 1122799

Energy Efficiency Rating		Current	Potential
Very energy efficient - lower running costs	A		
Energy efficient - lower running costs	B		73
Decent energy efficiency - lower running costs	C		
Some energy efficiency - lower running costs	D		
Not very energy efficient - higher running costs	E		41
Not energy efficient - higher running costs	F		
Very not energy efficient - higher running costs	G		

EU Directive



Real EstatesTottenham Office:
32 Tottenham Lane
Tottenham N20 9QJ

ll : 0208 445 3132
e : info@realestates-wsp.co.uk
w : www.realestates-wsp.co.uk