



Greenway, Totteridge, N20 8EE

£1,625,000 Freehold

Council Tax Band G

REAL ESTATES

Est.1981

Estate Agents · Residential Sales · Investments · Lettings

Real Estates are delighted to offer for sale a 5 BEDROOM DETACHED house measuring approx. 2259 sq ft, situated in this sought after road, convenient for Totteridge & Whetstone Northern Line tube station and multiple shopping facilities at Whetstone High Road.

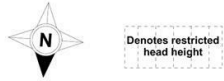
The spacious accommodation includes 2 separate reception rooms, study, fitted kitchen, utility room and guest cloakroom. The 1st floor provides 4 bedrooms, 2 bathrooms (one en-suite to master bedroom) and to 2nd floor there is a further bedroom.

The SOUTH FACING rear garden extends to approx 100 ft with mature trees offering a good degree of seclusion. The paved driveway provides off street parking.

Early viewing highly recommended via our Totteridge office. Sole Agent.



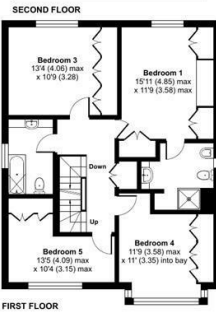
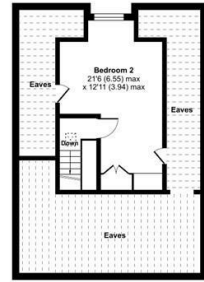
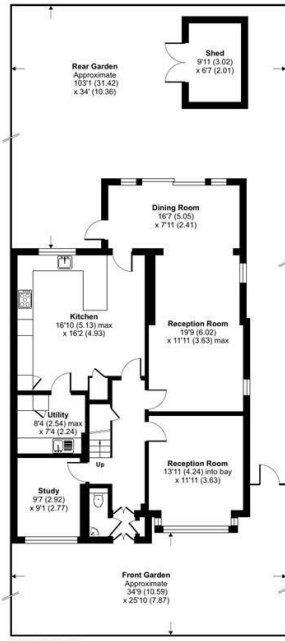




Greenway, London, N20

Approximate Area = 2259 sq ft / 209.8 sq m
 Limited Use Area(s) = 497 sq ft / 46.1 sq m
 Outbuilding = 67 sq ft / 6.2 sq m
 Total = 2823 sq ft / 262.1 sq m

For identification only - Not to scale



Certified Property Measurer
 Floor plan produced in accordance with RICS Property Measurement Standards incorporating International Property Measurement Standards (IPMS Residential). © richcom 2024. Produced for Real Estates. REF: 1124205

Energy Efficiency Rating		Current	Potential
Very energy efficient - lower running costs	A		
Energy efficient - lower running costs	B		80
Decent energy efficiency - lower running costs	C		
Some energy efficiency - lower running costs	D		48
Not very energy efficient - higher running costs	E		
Energy inefficient - higher running costs	F		
Very energy inefficient - higher running costs	G		

EU Directive

