



Loring Road, Whetstone, N20 0UH
Offers In Excess Of £975,000 Freehold Council Tax Band E

REAL ESTATES
Est.1981

Estate Agents · Residential Sales · Investments · Lettings

Real Estates are delighted to offer for sale a larger than average four-bedroom bay fronted family home located on a sought after tree lined road, within easy reach of Whetstone High Road and transport links.

Downstairs, the property features a stunning open plan kitchen/breakfast area, separate front reception which features log burner, separate utility room and downstairs WC. The first floor comprises two good sized double bedrooms, single bedroom and a family bathroom. The master bedroom is featured within the loft space which also has the benefit of a further bathroom.

The property further benefits from off street parking for two cars as well as a 78ft south-east facing rear garden with patio area off of the kitchen.

Loring Road is an extremely sought after residential location providing convenient access to both Oakleigh Park overground station as well Totteridge & Whetstone (Northern Line) stations. The property also benefits from the amenities of Whetstone high road and from being within a short distance from three of the main local schools of Sacred Heart, All Saints, Alma and Queenswell Primary Schools.

Please contact our Totteridge office for further information or to arrange a viewing. Sole Agent.

Council tax is band E.

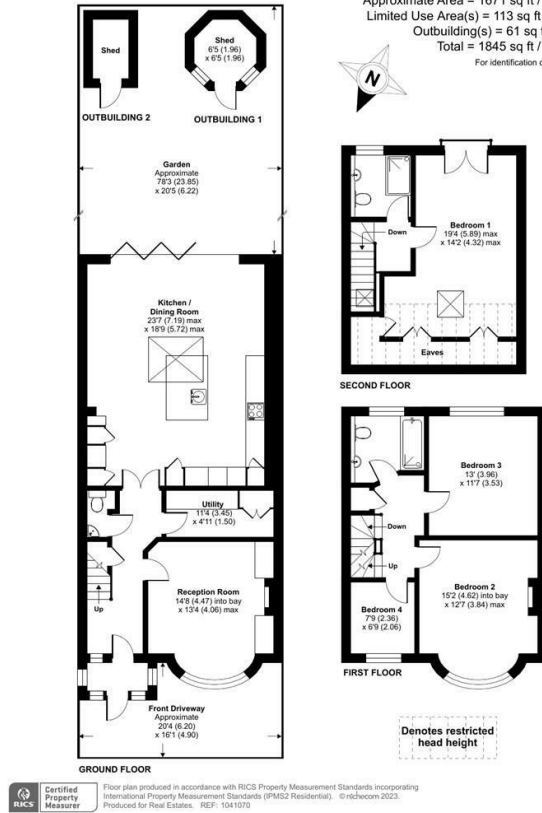
EPC is band C.





Loring Road, London, N20

Approximate Area = 1671 sq ft / 155.2 sq m
 Limited Use Area(s) = 113 sq ft / 10.5 sq m
 Outbuilding(s) = 61 sq ft / 5.7 sq m
 Total = 1845 sq ft / 171.4 sq m
 For identification only - Not to scale



Energy Efficiency Rating		Current	Potential
Very energy efficient - lower running costs	A		84
Energy efficient - lower running costs	B		
Decent energy efficiency - lower running costs	C		59
Some energy efficiency - lower running costs	D		
Not very energy efficient - higher running costs	E		
Energy inefficient - higher running costs	F		
Very energy inefficient - higher running costs	G		

EU Directive

