



Holden Road, Woodside Park, N12 7AG
£775,000 Leasehold Council Tax Band

REAL ESTATES
Est.1981

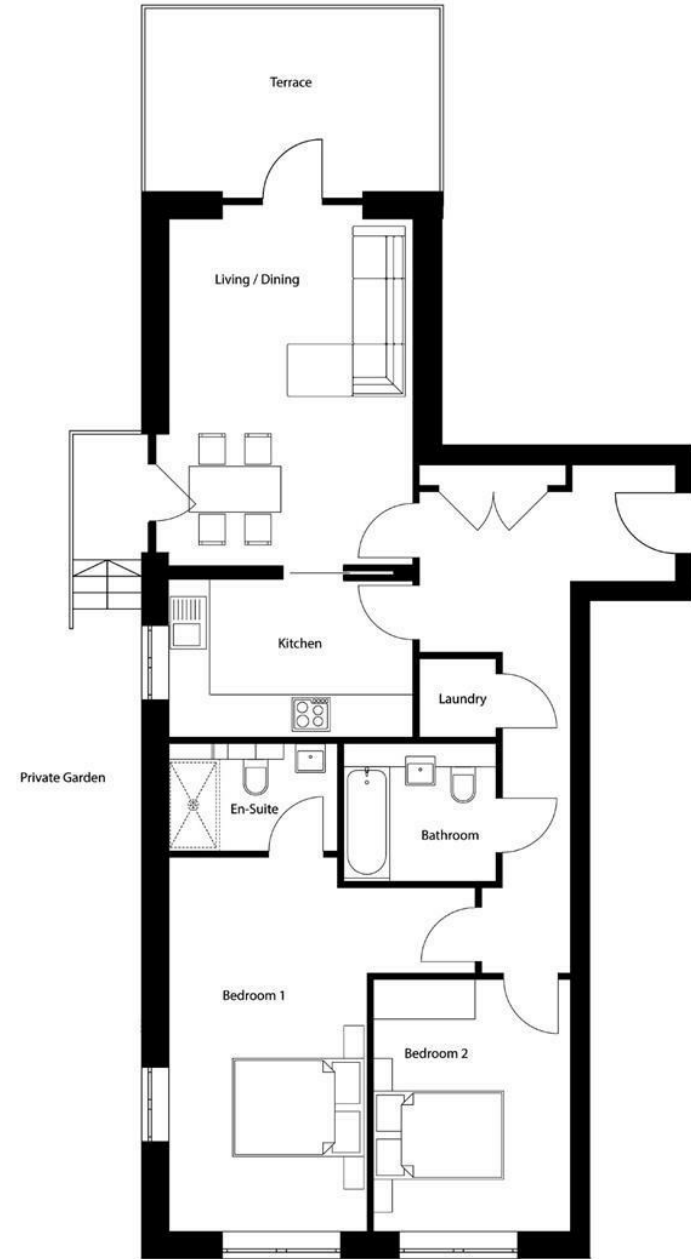
Estate Agents · Residential Sales · Investments · Lettings

LAST APARTMENT REMAINING. An opportunity to acquire this superb GROUND FLOOR apartment of 964 sq ft in this new development of just 34 exquisitely finished apartments with SECURE UNDERGROUND PARKING, excellent transport links, great local amenities and green spaces. The Westbury offers the very best of urban and rural living.

The apartment is exceptionally well fitted with high specification designer kitchens and bathrooms, underfloor heating throughout, and are pre-wired for modern entertainment systems.

* 2 BEDROOMS * 2 BATHROOMS (1 EN SUITE) * PRIVATE GARDEN AND TERRACE *

NB. Images do not relate to this unit.



Energy Efficiency Rating		Current	Potential
Very energy efficient - lower running costs			
102-100kWh/m ² A			
81-101kWh/m ² B			
69-80kWh/m ² C			
55-68kWh/m ² D			
39-54kWh/m ² E			
21-38kWh/m ² F			
11-20kWh/m ² G			
Not energy efficient - higher running costs			
England & Wales		EU Directive 2002/91/EC	