





19 Grenville Row, Bodelwyddan, Rhyl, LL18 5TA

£160,000

3 1 1



Located in a quiet and well-established residential area of Bodelwyddan, this well-presented three-bedroom semi-detached home is perfect for first-time buyers seeking comfort, convenience, and value. With excellent access to the A55, it's an ideal base for commuting across North Wales and beyond.

Inside, the home offers a bright, airy lounge with built-in storage—great for keeping things tidy while maintaining a modern feel. The stylish kitchen features a breakfast bar, a useful storage cupboard, and opens out to a fully enclosed rear garden. Sunny and secure, the garden is ideal for entertaining, relaxing, or letting children play safely. A garden shed adds extra storage.

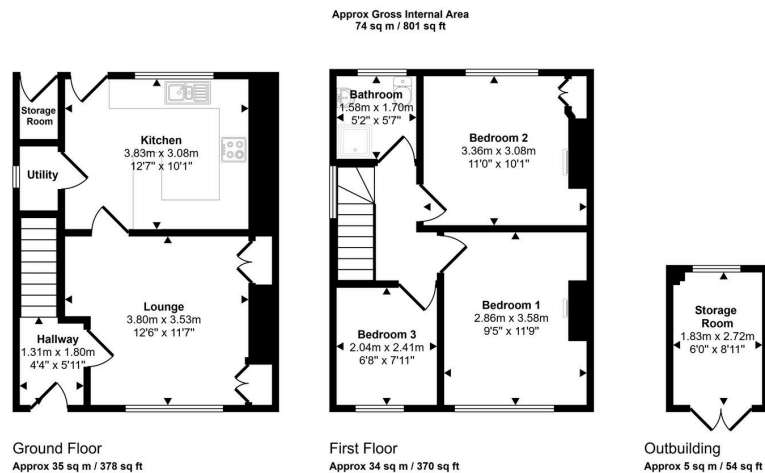
Upstairs are three comfortable bedrooms and a contemporary bathroom complete with a walk-in shower.







- NO CHAIN
- Enclosed Rear Garden
- Three comfortable bedrooms
- Modern kitchen with breakfast bar
- Light-filled lounge with built-in storage



This floorplan is only for illustrative purposes and is not to scale. Measurements of rooms, doors, windows, and any items are approximate and no responsibility is taken for any error, omission or mis-statement. Icons of items such as bathroom suites are representations only and may not look like the real items. Made with Made Snappy 360.

