



Number 6
THE OVAL
Llandudno





Welcome Home

Step into a world of refined beauty and unparalleled charm at Lyndale, 6 The Oval in Llandudno. Nestled in the highly sought-after West Shore area, this stunning four-bedroom Victorian detached home offers an idyllic setting overlooking the picturesque open green space and cricket field. With breath taking views of the majestic Carneddau mountains to the front and the iconic Great Orme to the rear, this is a truly exceptional residence that embodies both tranquillity and natural beauty.

Step through the entrance porch and be warmly welcomed into a home that exudes elegance and charm. The grand reception hall awaits, spacious and inviting, setting the tone for the remarkable journey that lies ahead. This is a residence that invites you to create lasting memories and embark on a life of unmatched comfort and style.







...And
Relax

Discover the art of relaxation in three bright and spacious reception rooms that beckon you to unwind and rejuvenate. The lounge, adorned with a large bay window, bathes the space in natural light, creating an inviting ambiance that is perfect for cosy evenings and heartfelt conversations. The sitting room boasts an original feature fireplace, adding a touch of character and warmth to the room. As you step into the dining room, feel the warmth of the sun's embrace while immersing yourself in the beauty of the surrounding landscape.



Entertaining Haven

Prepare to host memorable gatherings and create culinary delights in the dining room, where French doors seamlessly connect the interior with the enchanting rear garden. This is a space designed for celebrating life's special moments and indulging in the joys of good company and fine dining. The modern fitted kitchen is a chef's dream, equipped with integrated AEG induction hob, double oven, and microwave, as well as an integrated dishwasher. A walk-in pantry offers ample storage space, while an inner hallway leads to a utility room, a modern shower room, and a rear porch, ensuring that every aspect of your hosting needs is met with utmost convenience.







Onwards & Upwards

Ascend to the first floor and be greeted by a spacious landing that bathes in natural light, creating a bright and airy atmosphere. This is just the beginning of a journey that leads to the epitome of comfort and relaxation.

With UPVC double glazing windows and an new Ideal combination gas-fired boiler, every aspect of comfort and efficiency has been meticulously considered. Walk across the plush carpet underfoot and immerse yourself in the fresh and spacious surroundings that define this remarkable home.



Sweet Slumber



The master bedroom, adorned with tasteful décor in soft neutral tones, offers a tranquil escape from the world, complete with an en-suite shower room for added convenience. Three additional double bedrooms beckon with their own charm and elegance, each thoughtfully designed to provide a sanctuary of rest and rejuvenation. Every aspect of these bedrooms has been carefully considered to ensure a perfect night's sleep... So sink into sumptuous bedding and feel the soft embrace of luxurious linens.









Bathe in Bliss

The modern family bathroom adds a touch of luxury to the living experience and enjoys a practical, yet luxurious layout with tasteful decor.

Manifest taking a morning spritz beneath the rainfall shower, or sinking into the bathtub for an evening soak whilst whilst reading your favourite book and sipping on a glass of red.





Step Outside

Embrace the splendour of the outdoors in this captivating property. A block-paved driveway and a front garage greet you, offering convenience and ample parking space. As you venture into the rear, a picturesque garden unfolds before your eyes, adorned with a pristine lawn and thriving shrubs and plants.

Nestled in the highly sought-after West Shore, The Oval offers an enviable lifestyle surrounded by the natural beauty of Llandudno. With views stretching across the cricket pitch to the majestic Great Orme and the mountains beyond, you'll feel captivated by the stunning vistas that greet you from your doorstep.

The Promenade, pier, and other local amenities are just a short distance away, ensuring that every aspect of coastal living is within reach. This quiet and desirable location provides a sense of tranquillity while still being within walking distance of the vibrant town centre.

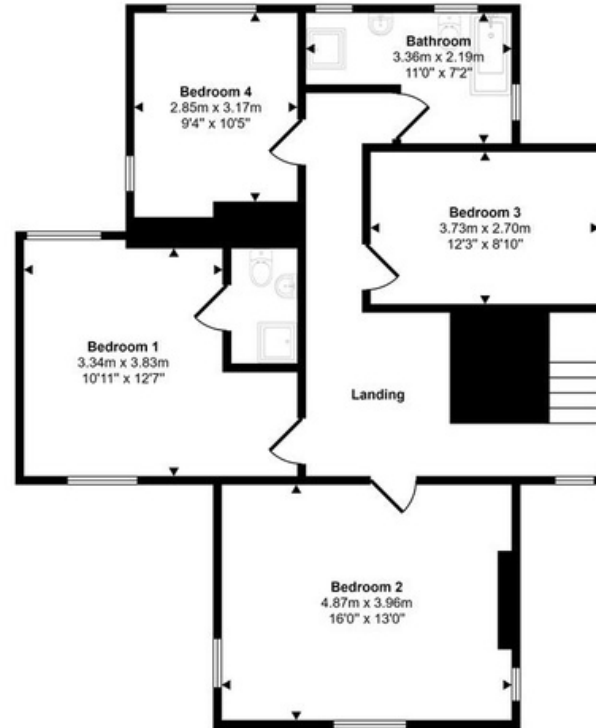
Discover the charm of Llandudno with its Victorian facades, diverse range of shops, esteemed schools, cultural theatre, convenient train station, and the iconic Llandudno pier. This is a place where timeless beauty and modern convenience intertwine, creating a perfect harmony for an exceptional lifestyle.



Approx Gross Internal Area
193 sq m / 2079 sq ft



Ground Floor
Approx 108 sq m / 1159 sq ft



First Floor
Approx 85 sq m / 919 sq ft

This floorplan is only for illustrative purposes and is not to scale. Measurements of rooms, doors, windows, and any items are approximate and no responsibility is taken for any error, omission or mis-statement. Icons of items such as bathroom suites are representations only and may not look like the real items. Made with Made Snappy 360.

FINER DETAILS...

- Sought after quiet location
- Views across cricket pitch to Great Orme and mountains beyond
- Three bright and spacious reception rooms
- Four-bedroom detached house
- Family bathroom & en-suite
- Downstairs shower room & WC
- Detached garage with driveway and off road parking
- No chain, property ready to move into
- Leasehold, 999 years from Dec 1933

Number 6
THE OVAL
Llandudno

6 The Oval, Llandudno, LL30 2BT

For any enquiries, or to view 6 The Oval, please contact
LL Estates using the below information:

01745 591 811

sales@llestates.co.uk

