



4 Palm Mews, Laindon - SS15 4JF

£325,000 - £335,000 Freehold

Nestled in a serene mews location, this inviting 2-bedroom mid-terraced house offers a perfect blend of modern living and convenience. Offering a modern vibe, this property features a kitchen diner at the rear, complemented by French doors that open up to a sunny south-facing garden, ideal for soaking up the sun and hosting al-fresco gatherings. With parking readily available for two cars on the drive

Council Tax band: C ~ EPC Energy Efficiency Rating: C



tyler estates

01277 626181

www.tylerestates.co.uk



Entrance Hall

Fitted engineered wood flooring and allows for coat and shoe storage.

Lounge 14' 4" x 10' 0" (4.36m x 3.06m)

Carpeted floor, window to front and large under stair storage cupboard.

Kitchen 9' 8" x 6' 0" (2.95m x 1.83m)

Fitted with a range of wall and base units with stainless steel sink sitting traditionally under the window over looking the garden. The freestanding electric oven will remain with the washing machine and Fridge/freezer available if required.

Dining Area 9' 8" x 6' 11" (2.95m x 2.12m)

Light grey laminate flooring is fitted and flows through to the kitchen area. French doors reveal the low maintenance south facing rear garden.

Landing

Bedroom One 11' 4" x 13' 3" (3.45m x 4.05m)

A generous bedroom with carpeted floor, window to the front aspect with good views, in-built storage cupboard housing the hot water tank.

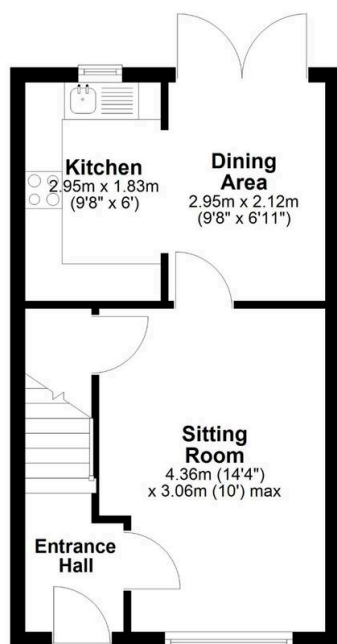
Bedroom Two 12' 8" x 6' 7" (3.86m x 2.01m)

A further bedroom overlooking the rear garden with carpeted floor.

Bathroom Fitted with a white suite comprising of bath with shower over and screen, inset handbasin and back to wall WC.



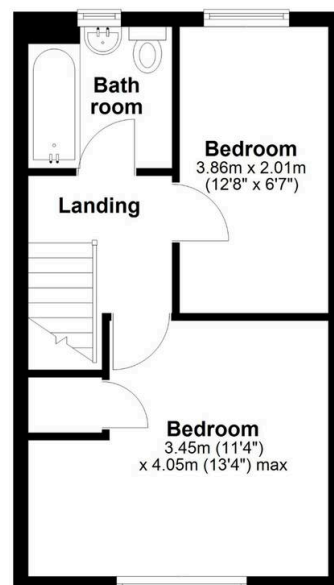
Ground Floor



tyler estates



First Floor



APPROX INTERNAL FLOOR AREA
60 SQ M (650 SQ FT)
This floorplan is for illustrative
purposes only and is **NOT TO SCALE**
All measurements are approximate
NOT to be used for valuation purposes
Copyright Tyler Estates 2025